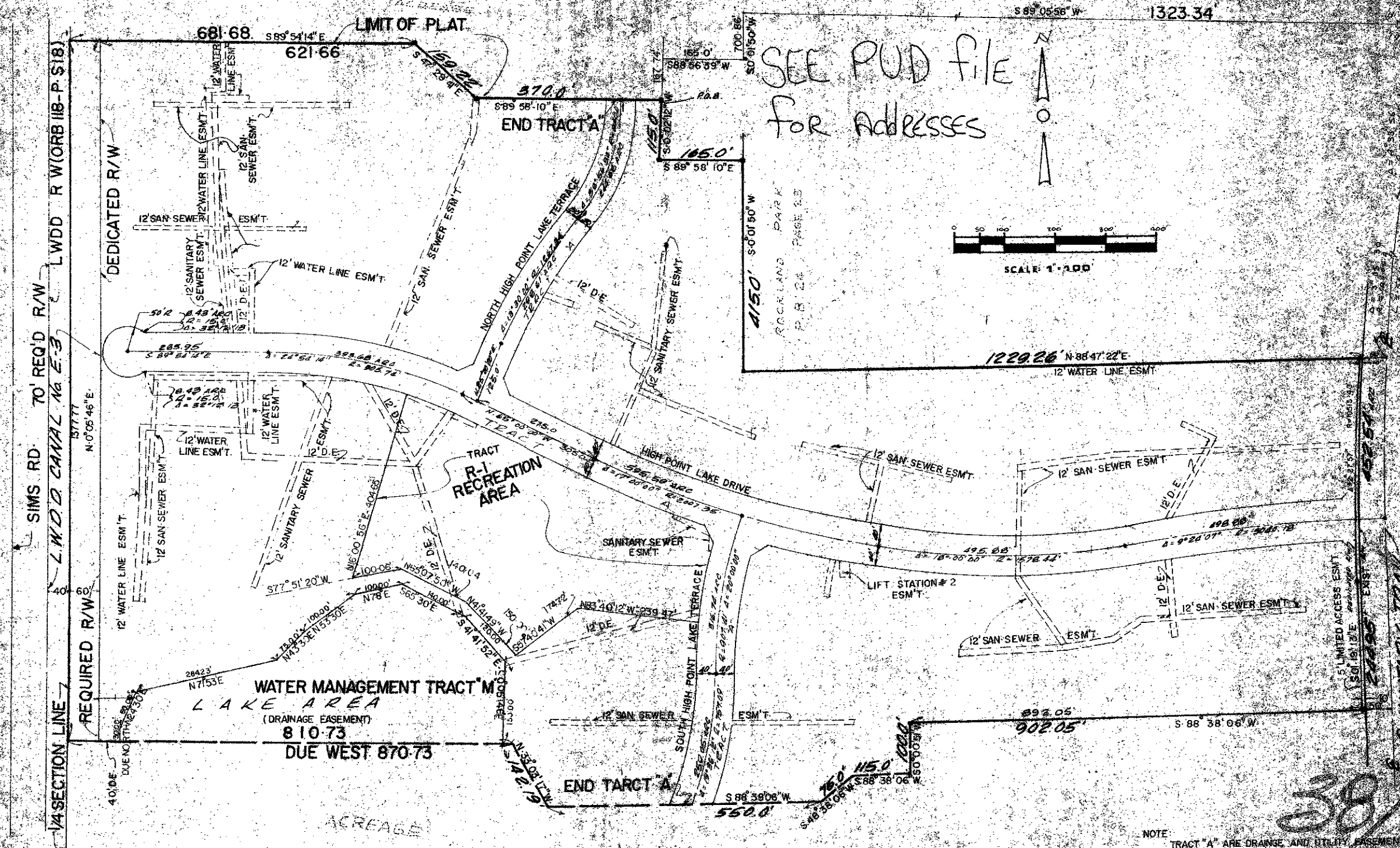


HIGH POINT OF DELRAY WEST — PLAT NO. 1

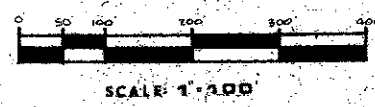
A PART OF SECTION 14 T46S, R42E, PALM BEACH COUNTY FLORIDA

SHEET 2 OF 2

129



SEE PUD FILE FOR ADDRESSES



NOTE: TRACT "A" ARE DRAINAGE AND UTILITY EASEMENTS

0254-000

High Point Delray West

ROBERT A. TUHSO
LAND SURVEYOR

ENVIRONMENTAL ENGINEERING
CONSULTING AND ENVIRONMENTAL ENGINEERS