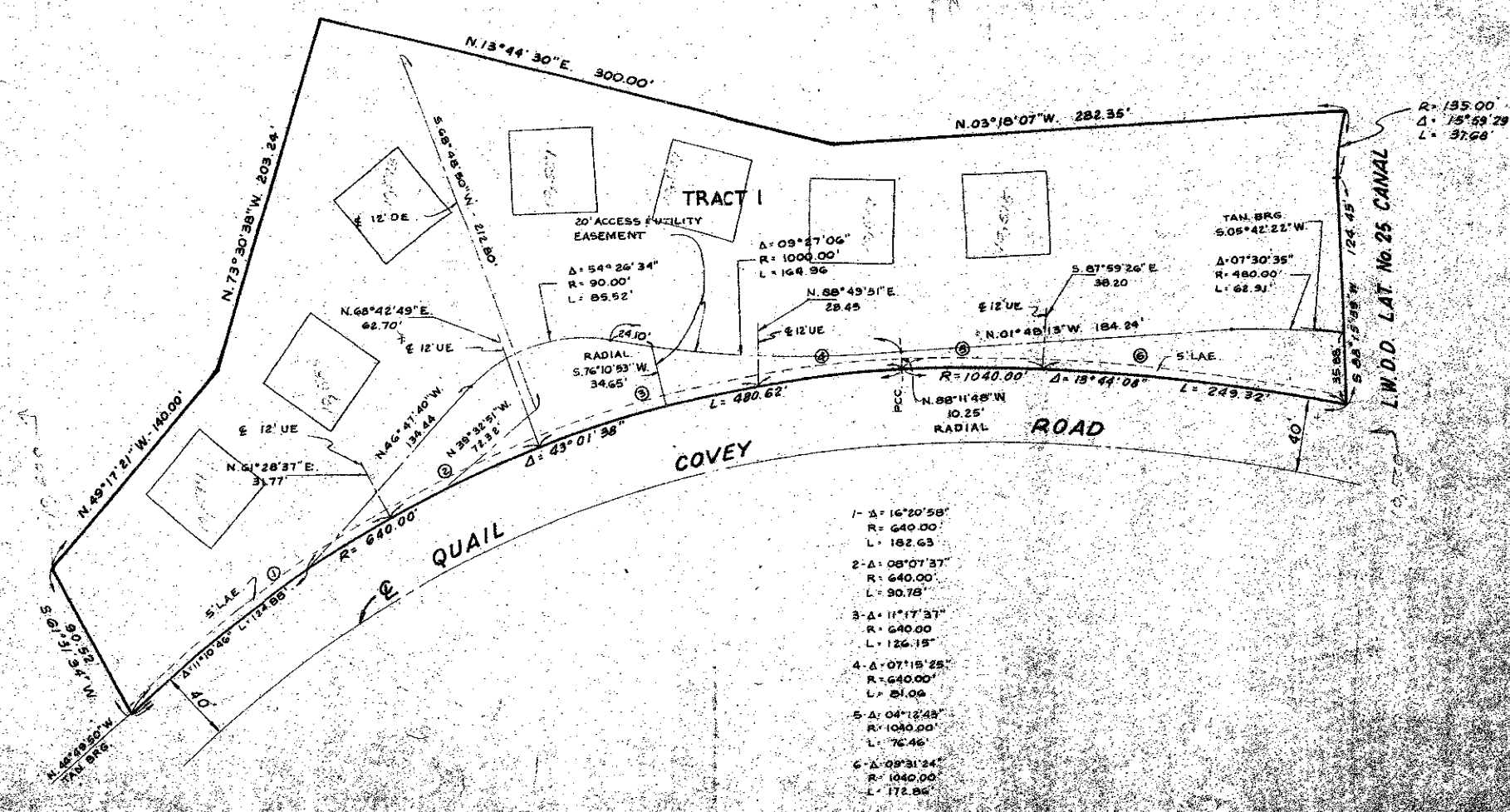
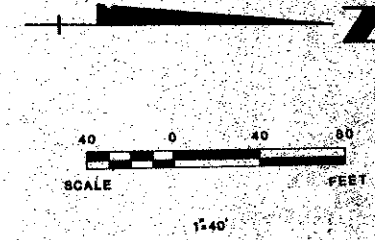


PLAT NO. 18 QUAIL RIDGE

(A PLANNED UNIT DEVELOPMENT)

IN SECTION 30 TOWNSHIP 45 SOUTH, RANGE 43 EAST
PALM BEACH COUNTY, FLORIDA, BEING A REPLAT OF
PORTIONS OF TRACTS 51,52,53,76,77,78,84 AND 85
PALM BEACH FARMS COMPANY PLAT NO. 8 SEC. 30
T-45-S, R-43-E PLAT BOOK 5 PAGE 73 AND OTHER LANDS

IN 4 SHEETS SHEET NO. 3



- 1- Δ = 16°20'58"
- R = 640.00'
- L = 182.63'
- 2- Δ = 08°07'37"
- R = 640.00'
- L = 90.78'
- 3- Δ = 11°17'31"
- R = 640.00'
- L = 126.15'
- 4- Δ = 07°15'25"
- R = 640.00'
- L = 81.00'
- 5- Δ = 04°12'45"
- R = 1040.00'
- L = 76.46'
- 6- Δ = 09°31'24"
- R = 1040.00'
- L = 172.86'

BUILDING LOCATIONS
ARE APPROXIMATE

1000 053

QUAIL RIDGE