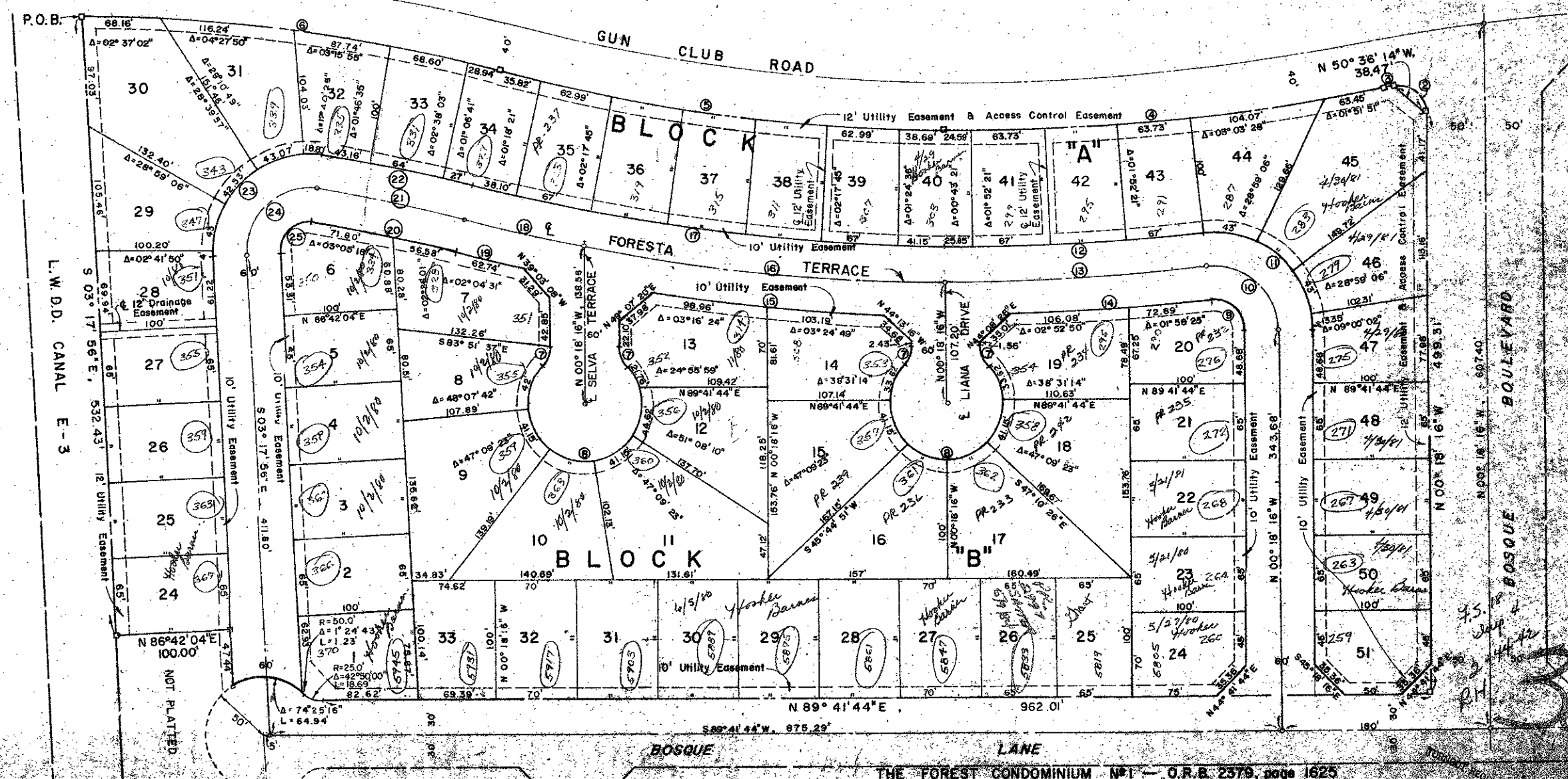


PLAT NO. 4
"THE FOREST HOMES"
 PALM BEACH COUNTY, FLORIDA
 SHEET 2 OF 2

CURVE DATA					
No	Δ	R	T	L	LC
1	90° 00' 00"	25'	25.00'	39.27'	35.36'
2	100° 35' 56"	25'	30.11'	43.89'	38.47'
3	00° 16' 43"	1870.08'	4.65'	9.09'	9.09'
4	11° 15' 43"	1950.08'	192.27'	383.30'	382.69'
5	14° 11' 42"	1572.05'	195.74'	388.47'	388.48'
6	14° 11' 46"	1492.05'	188.79'	369.68'	368.74'
7	42° 50' 00"	25'	9.81'	18.69'	18.26'
8	265° 40' 00"	50'		231.84'	
9	95° 57' 20"	25'	27.74'	41.87'	37.14'
10	95° 57' 20"	55'	61.04'	92.11'	81.72'
11	95° 57' 20"	85'	94.33'	142.35'	126.29'
12	06° 20' 24"	2050.08'	113.54'	226.85'	228.73'
13	06° 20' 24"	2080.08'	115.20'	230.17'	230.05'
14	04° 51' 15"	2110.08'	89.44'	178.17'	178.72'
15	06° 41' 13"	1732.05'	101.15'	202.15'	202.05'
16	10° 38' 17"	1702.05'	158.46'	316.02'	315.36'
17	14° 11' 42"	1672.05'	206.19'	414.25'	413.19'
18	03° 33' 25"	1702.05'	52.85'	105.66'	105.65'
19	02° 04' 31"	1732.05'	31.37'	62.74'	62.73'
20	50° 31' 19"	1332.08'	64.24'	128.38'	128.33'
21	05° 31' 19"	1362.08'	65.69'	131.27'	131.22'
22	50° 31' 19"	1392.08'	67.13'	134.16'	134.11'
23	102° 03' 07"	85'	105.06'	151.40'	132.16'
24	102° 03' 07"	55'	67.98'	97.96'	85.52'
25	102° 03' 07"	25'	30.90'	44.53'	39.87'



PLAT No. 3
 THE FOREST HOMES
 PLAT BOOK 36 PAGE 9

Field Book
 No. Pg.
 C. GIVENS
 Drawn
 C. GIVENS

ROBERT E. OWEN & ASSOCIATES, INC.
 ENGINEERS PLANNERS SURVEYORS
 WEST PALM BEACH
 FLORIDA

PLAT NO. 4
 THE FOREST HOMES

0243-300
 39/136