

38-142

# BOCA RIO HEIGHTS, PLAT NO. 1

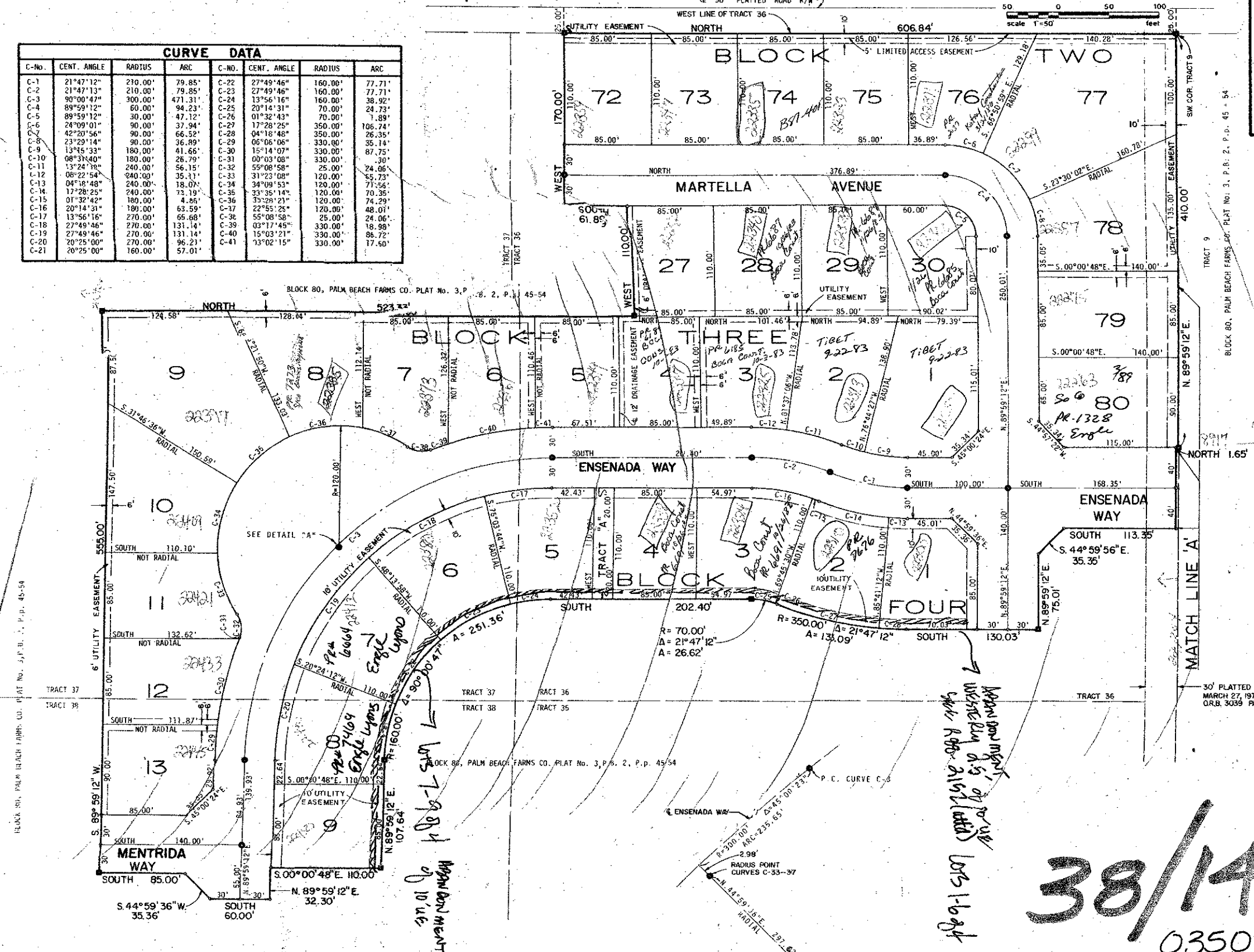
BEING A REPLAT OF A PORTION OF BLOCK 80,  
PALM BEACH FARMS COMPANY PLAT NO. 3, PLAT BOOK 2,  
PAGES 45 THRU 54, PUBLIC RECORDS, PALM BEACH COUNTY,  
FLORIDA, LYING IN SECTION 29, TWP. 47 S., RGE. 42 E.,  
PALM BEACH COUNTY, FLORIDA.

REC AREA "C"  
PLAT OF  
SANDALFOOT COVE  
SECTION SEVEN  
AND EIGHT  
P. B. 30  
Pl. 224-225

# 142

STATE OF FLORIDA  
COUNTY OF PALM BEACH  
THIS PLAT WAS FILED FOR  
RECORD AT \_\_\_\_\_  
THIS \_\_\_\_\_ DAY OF \_\_\_\_\_  
A.D. 1977 AND DULY RECORDED  
IN PLAT BOOK \_\_\_\_\_  
ON PAGES \_\_\_\_\_ AND \_\_\_\_\_  
JOHN B. DUNKLE, CLERK  
CIRCUIT COURT  
BY: \_\_\_\_\_ DC.

CURVE DATA							
C-NO.	CENT. ANGLE	RADIUS	ARC	C-NO.	CENT. ANGLE	RADIUS	ARC
C-1	21°47'12"	210.00'	79.85'	C-22	27°49'46"	160.00'	77.71'
C-2	21°47'13"	210.00'	79.85'	C-23	27°49'46"	160.00'	77.71'
C-3	30°00'47"	300.00'	471.31'	C-24	13°56'16"	160.00'	38.92'
C-4	89°59'12"	60.00'	94.23'	C-25	23°14'31"	70.00'	24.73'
C-5	89°59'12"	30.00'	47.12'	C-26	01°32'43"	70.00'	7.89'
C-6	24°09'01"	90.00'	37.94'	C-27	17°28'25"	350.00'	106.74'
C-7	42°20'56"	90.00'	66.52'	C-28	04°18'48"	350.00'	26.35'
C-8	23°29'14"	90.00'	36.89'	C-29	06°06'06"	330.00'	35.14'
C-9	13°45'33"	180.00'	41.66'	C-30	15°14'07"	330.00'	87.75'
C-10	08°31'40"	180.00'	26.79'	C-31	00°03'03"	330.00'	74.30'
C-11	13°24'18"	240.00'	56.15'	C-32	55°08'58"	25.00'	24.06'
C-12	06°22'54"	240.00'	35.11'	C-33	31°23'08"	120.00'	55.73'
C-13	04°18'48"	240.00'	18.07'	C-34	34°09'53"	120.00'	71.56'
C-14	17°28'25"	240.00'	73.19'	C-35	33°35'14"	120.00'	70.35'
C-15	01°32'42"	160.00'	4.85'	C-36	33°29'21"	120.00'	74.29'
C-16	20°14'31"	180.00'	63.59'	C-17	22°55'25"	120.00'	48.01'
C-17	13°56'16"	270.00'	65.68'	C-36	55°08'58"	25.00'	24.06'
C-18	27°49'46"	270.00'	131.14'	C-39	03°17'45"	330.00'	18.98'
C-19	27°49'46"	270.00'	131.14'	C-40	15°03'21"	330.00'	86.72'
C-20	20°25'00"	270.00'	96.21'	C-41	73°02'15"	330.00'	17.50'
C-21	20°25'00"	160.00'	57.01'	C-41	73°02'15"	330.00'	17.50'



BLOCK 80, PALM BEACH FARMS CO. PLAT NO. 3, P. B. 2, P. P. 45-54

MENTRIDA WAY S. 3'

Match line 'A' with handwritten notes: 'Match line 'A' with 10' block', 'Match line 'A' with 10' block', 'Match line 'A' with 10' block'

# 38/142

0350-000

DETAIL "A"

**EDM** E D M SURVEYING & MAPPING INC.  
2300 PALM BEACH LAKES BOULEVARD  
SUITE 100, PALM BEACH, FLORIDA 33480  
TELEPHONE (407) 833-1234  
FAX (407) 833-1235

BOCA RIO HEIGHTS  
PLAT NO. 1

3 3