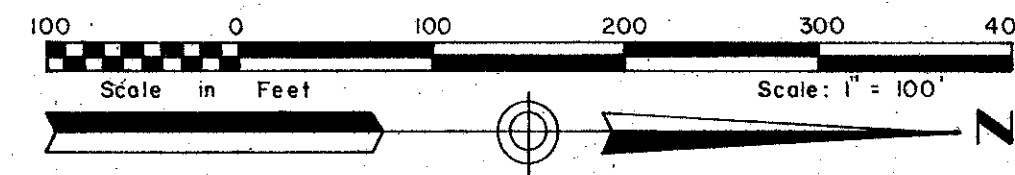


# CIVIC SITE OF WELLINGTON COUNTRYPLACE-P.U.D.

IN PART OF SECTION 21, TWP. 44 S., RGE. 41E.  
PALM BEACH COUNTY, FLORIDA

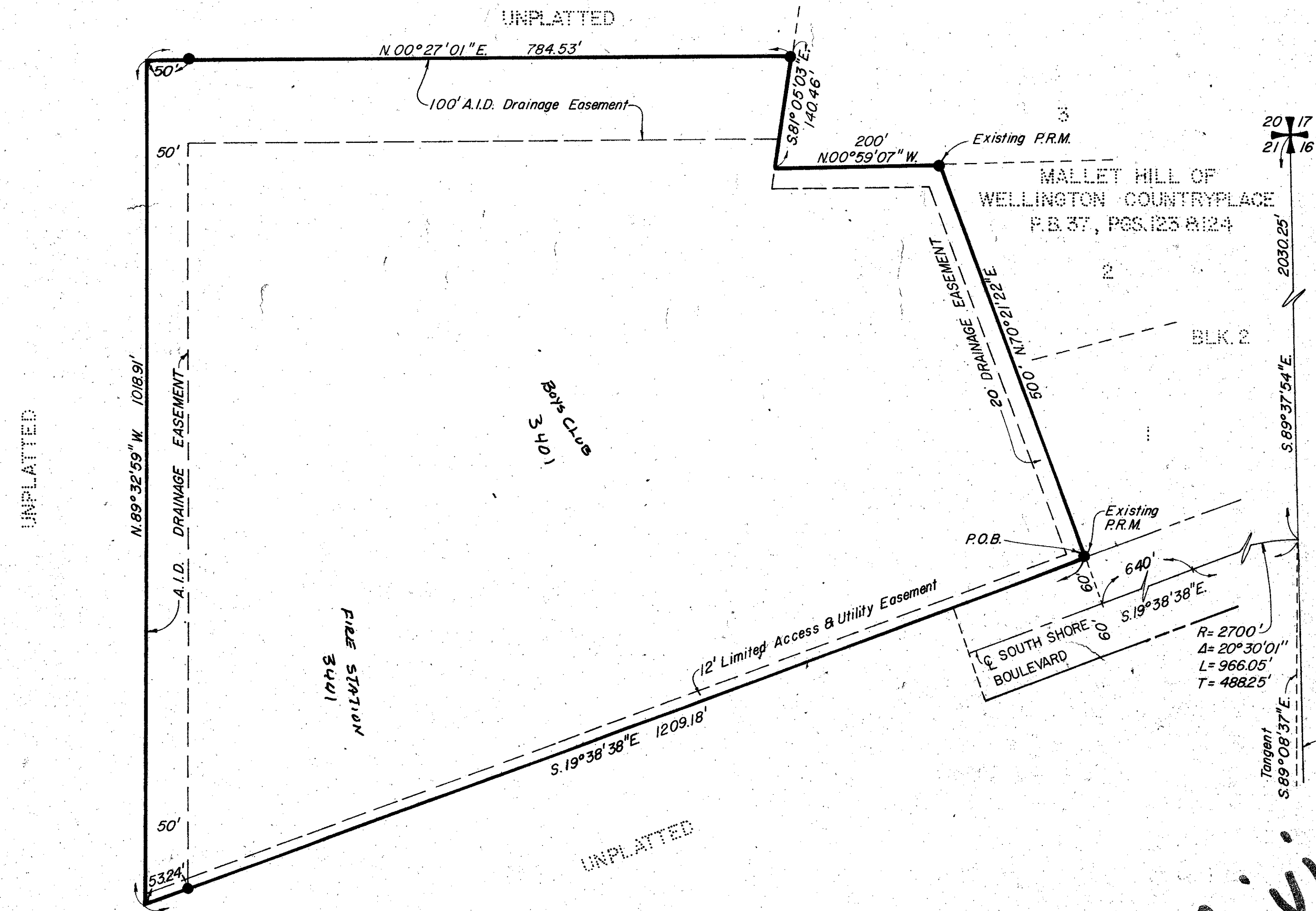
GEE & JENSON  
ENGINEERS-ARCHITECTS-PLANNERS, INC.  
WEST PALM BEACH, FLORIDA  
JULY 1979



SHEET 2 of 2 SHEETS

191

STATE OF FLORIDA  
COUNTY OF PALM BEACH  
This Plat was filed for record on  
M. this \_\_\_\_\_ day of  
\_\_\_\_\_, 1979, and duly recorded  
in Plat Book No. \_\_\_\_\_ on page  
\_\_\_\_\_  
JOHN B. DUNKLE, Clerk Circuit Court  
By \_\_\_\_\_



Civic Site 8 Place P.U.D.  
Wellington Country Place P.U.D.

**NOTES**

- All bearings shown hereon are relative to an assumed meridian used throughout Wellington.
- Building setback lines shall be as required by Palm Beach County Zoning Regulations.
- There shall be no buildings or other structures placed on Utility Easements.
- denotes Permanent Reference Monument.
- Where Utility Easements and Drainage Easements cross, Drainage Easements shall take precedent.
- There shall be no buildings or any kind of construction or trees or shrubs placed on Drainage Easements.

21/44/41      0333-304  
38-191