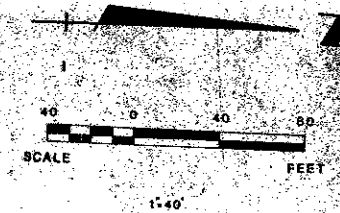


39-87

# PLAT NO. 8A EASTPOINTE COUNTRY CLUB

(A PLANNED UNIT DEVELOPMENT)  
IN SECTION 27, TOWNSHIP 41 SOUTH, RANGE 42 EAST  
PALM BEACH COUNTY, FLORIDA

SHEET NO. 2



37

NOTES:  
THERE SHALL BE NO BUILDINGS OR STRUCTURES PLACED ON UTILITY EASEMENTS.  
THERE SHALL NOT BE ANY TYPE OF CONSTRUCTION OR THE PLANTING OF TREES OR SHRUBS ON DRAINAGE EASEMENTS.

BEARING REFERENCE: PLAT BOOK 36, PAGES 11 THROUGH 18.

IMPROVEMENTS WITHIN THIS PLAT ARE SUBJECT TO THE DECLARATION OF RESTRICTIVE COVENANTS AS FILED IN O.R.B. 2543, PAGE 1270, OFFICIAL RECORDS OF PALM BEACH COUNTY.

BUILDING SETBACKS SHALL BE AS REQUIRED BY PALM BEACH COUNTY ZONING REGULATIONS.

AREA OF BLOCK 1 = 2.625 ACRES  
AREA OF BLOCK 2 = 1.696 ACRES  
AREA OF TRACT "A" = 0.249 ACRES  
DRAINAGE EASEMENT = 0.355 ACRES

TOTAL AREA = 4.925 ACRES

TOTAL DWELLING UNITS (SINGLE FAMILY) = 20

DENSITY = 4.06 UNITS PER ACRE

■ = PERMANENT REFERENCE MONUMENT (P.R.M.) NO. 1552

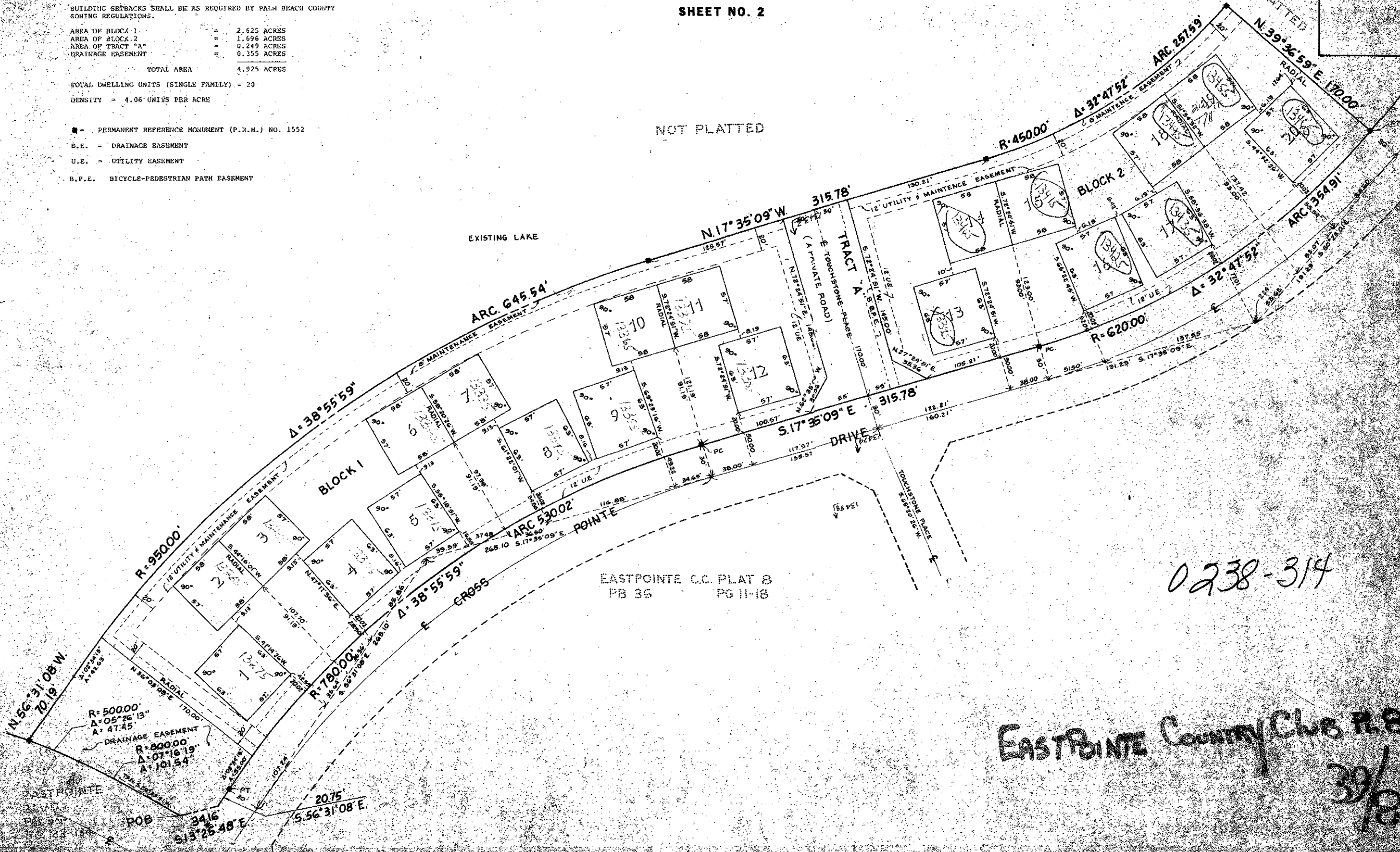
D.E. = DRAINAGE EASEMENT

U.E. = UTILITY EASEMENT

B.P.E. = BICYCLE-PEDESTRIAN PATH EASEMENT

NOT PLATTED

EXISTING LAKE



EASTPOINTE C.C. PLAT 8  
PB 35 PG II-16

0238-314

EASTPOINTE Country Club P.B.A

39/87