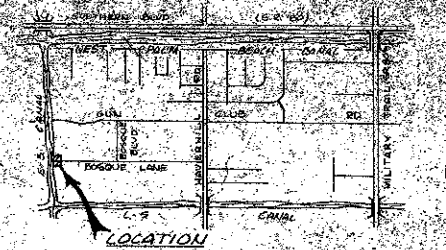


# PLAT NO. 6 "THE FOREST HOMES"

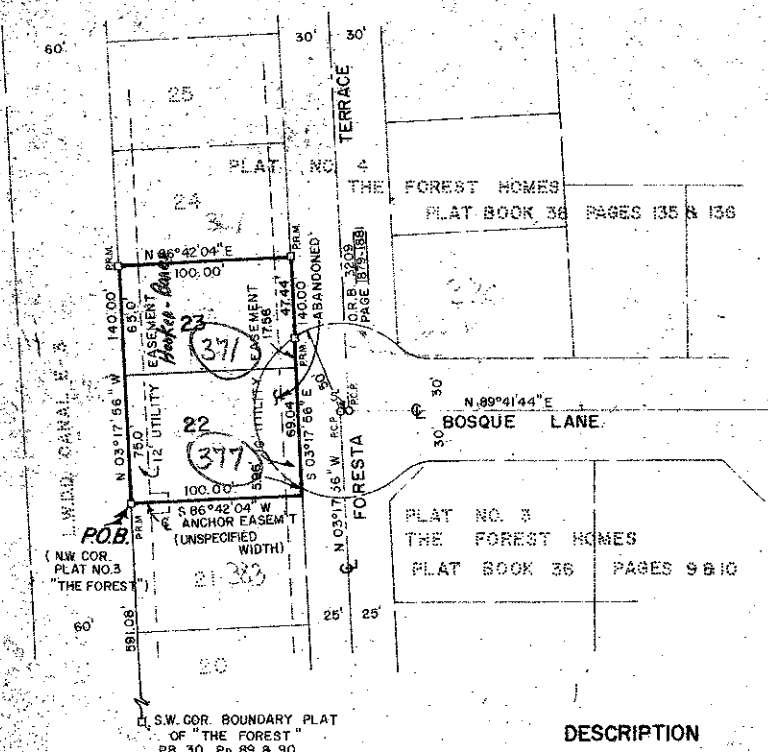
BEING A PARCEL OF LAND LYING IN THE NORTHEAST QUARTER (NE 1/4)  
OF SECTION 2, TOWNSHIP 44 SOUTH, RANGE 42 EAST  
AND BEING A REPLAT OF A PORTION OF TRACT "B" AND  
A PORTION OF BOSQUE LANE, BOUNDARY PLAT OF "THE FOREST"  
(P.B. 30, Pp. 89 AND 90)  
PALM BEACH COUNTY, FLORIDA  
SHEET 1 OF 1



LOCATION MAP

TITLE CERTIFICATION

101  
COUNTY OF PALM BEACH  
RECORDED IN  
PLAT BOOK 36 PAGE 135  
PLAT NO. 6  
PLAT NO. 37  
PLAT NO. 38  
PLAT NO. 39  
PLAT NO. 40  
PLAT NO. 41  
PLAT NO. 42  
PLAT NO. 43  
PLAT NO. 44  
PLAT NO. 45  
PLAT NO. 46  
PLAT NO. 47  
PLAT NO. 48  
PLAT NO. 49  
PLAT NO. 50  
PLAT NO. 51  
PLAT NO. 52  
PLAT NO. 53  
PLAT NO. 54  
PLAT NO. 55  
PLAT NO. 56  
PLAT NO. 57  
PLAT NO. 58  
PLAT NO. 59  
PLAT NO. 60  
PLAT NO. 61  
PLAT NO. 62  
PLAT NO. 63  
PLAT NO. 64  
PLAT NO. 65  
PLAT NO. 66  
PLAT NO. 67  
PLAT NO. 68  
PLAT NO. 69  
PLAT NO. 70  
PLAT NO. 71  
PLAT NO. 72  
PLAT NO. 73  
PLAT NO. 74  
PLAT NO. 75  
PLAT NO. 76  
PLAT NO. 77  
PLAT NO. 78  
PLAT NO. 79  
PLAT NO. 80  
PLAT NO. 81  
PLAT NO. 82  
PLAT NO. 83  
PLAT NO. 84  
PLAT NO. 85  
PLAT NO. 86  
PLAT NO. 87  
PLAT NO. 88  
PLAT NO. 89  
PLAT NO. 90  
PLAT NO. 91  
PLAT NO. 92  
PLAT NO. 93  
PLAT NO. 94  
PLAT NO. 95  
PLAT NO. 96  
PLAT NO. 97  
PLAT NO. 98  
PLAT NO. 99  
PLAT NO. 100  
PLAT NO. 101  
PLAT NO. 102  
PLAT NO. 103  
PLAT NO. 104  
PLAT NO. 105  
PLAT NO. 106  
PLAT NO. 107  
PLAT NO. 108  
PLAT NO. 109  
PLAT NO. 110  
PLAT NO. 111  
PLAT NO. 112  
PLAT NO. 113  
PLAT NO. 114  
PLAT NO. 115  
PLAT NO. 116  
PLAT NO. 117  
PLAT NO. 118  
PLAT NO. 119  
PLAT NO. 120  
PLAT NO. 121  
PLAT NO. 122  
PLAT NO. 123  
PLAT NO. 124  
PLAT NO. 125  
PLAT NO. 126  
PLAT NO. 127  
PLAT NO. 128  
PLAT NO. 129  
PLAT NO. 130  
PLAT NO. 131  
PLAT NO. 132  
PLAT NO. 133  
PLAT NO. 134  
PLAT NO. 135  
PLAT NO. 136  
PLAT NO. 137  
PLAT NO. 138  
PLAT NO. 139  
PLAT NO. 140  
PLAT NO. 141  
PLAT NO. 142  
PLAT NO. 143  
PLAT NO. 144  
PLAT NO. 145  
PLAT NO. 146  
PLAT NO. 147  
PLAT NO. 148  
PLAT NO. 149  
PLAT NO. 150  
PLAT NO. 151  
PLAT NO. 152  
PLAT NO. 153  
PLAT NO. 154  
PLAT NO. 155  
PLAT NO. 156  
PLAT NO. 157  
PLAT NO. 158  
PLAT NO. 159  
PLAT NO. 160  
PLAT NO. 161  
PLAT NO. 162  
PLAT NO. 163  
PLAT NO. 164  
PLAT NO. 165  
PLAT NO. 166  
PLAT NO. 167  
PLAT NO. 168  
PLAT NO. 169  
PLAT NO. 170  
PLAT NO. 171  
PLAT NO. 172  
PLAT NO. 173  
PLAT NO. 174  
PLAT NO. 175  
PLAT NO. 176  
PLAT NO. 177  
PLAT NO. 178  
PLAT NO. 179  
PLAT NO. 180  
PLAT NO. 181  
PLAT NO. 182  
PLAT NO. 183  
PLAT NO. 184  
PLAT NO. 185  
PLAT NO. 186  
PLAT NO. 187  
PLAT NO. 188  
PLAT NO. 189  
PLAT NO. 190  
PLAT NO. 191  
PLAT NO. 192  
PLAT NO. 193  
PLAT NO. 194  
PLAT NO. 195  
PLAT NO. 196  
PLAT NO. 197  
PLAT NO. 198  
PLAT NO. 199  
PLAT NO. 200



### DESCRIPTION

Commence at the Northwest corner of Plat No. 3 "The Forest Homes" as same is shown and recorded in Plat Book 36, at pages 9 and 10, said point also being North 03°17'56" West, 591.08 feet from the Southwest corner of Tract B, Boundary Plat of "The Forest" as same is shown and recorded in Plat Book 30 at pages 89 and 90; thence from the POINT OF BEGINNING run (bearings mentioned herein are in the meridian of said Plat No. 3 "The Forest Homes"):

1. North 03°17'56" West a distance of 140.00 feet; thence...
2. North 86°42'04" East a distance of 100.00 feet; thence...
3. South 03°17'56" East a distance of 140.00 feet; thence...
4. South 86°42'04" West a distance of 100.00 feet, to the POINT OF BEGINNING.

CONTAINING .321 Acres, more or less.

### DEDICATION

KNOW ALL MEN BY THESE PRESENTS that Imperial Industrial Group Inc. owner of the lands shown and described hereon and shown hereon as Plat No. 6, "THE FOREST HOMES", has caused the same to be surveyed and plotted as shown hereon and do hereby dedicate as follows:

#### EASEMENTS

The utility easements as shown hereon are hereby dedicated in perpetuity for the construction, operation and maintenance of utilities.

IN WITNESS WHEREOF, the above named corporation has caused these presents to be signed by its vice president and attested to by its secretary and its corporate seal to be affixed hereto by and with the authority of its Board of Directors, this 22nd day of February, A.D. 1960.

### ACKNOWLEDGMENT

STATE OF FLORIDA  
COUNTY OF PALM BEACH  
BEFORE ME personally appeared H. Barry Gales AND Randall E. Dickey to me well known, and known to me to be the individuals described in and who executed the foregoing instrument as vice president and Asst. Secretary of Imperial Industrial Group Inc. a corporation, and they severally acknowledged to and before me that they executed such instrument as such officers of said corporation and that the seal affixed to the foregoing instrument is the corporate seal of said corporation and that it was affixed to said instrument by due and regular corporate authority and that said instrument is the free act and deed of said Corporation.  
WITNESS my hand and official seal, this 22nd day of February, A.D. 1960.  
By: [Signature] Notary Public  
My Commission Expires: 02-22-1962

### MORTGAGEE'S CONSENT

STATE OF FLORIDA  
COUNTY OF BROWARD  
The undersigned hereby certifies that it is the holder of a mortgage upon the property described hereon and does hereby join in and consent to the dedication of the land described in the dedication hereon by the owner thereof and agrees that its mortgage, which is recorded in Official Record Book 10, at Pages 1000, through 1000, Public Records of Palm Beach County, Florida, shall be subordinated to the said dedication shown hereon.  
IN WITNESS WHEREOF, DCA of Palm Beach Inc.  
a Florida corporation has caused these presents to be signed by its Secretary and attested to by its Secretary and its corporate seal to be affixed hereto by and with the authority of its Board of Directors this 22nd day of February, A.D. 1960.  
Attest: [Signature] DCA of Palm Beach Inc. a corporation of the State of Florida  
By: [Signature]

### ACKNOWLEDGMENT

STATE OF FLORIDA  
COUNTY OF BROWARD  
BEFORE ME personally appeared Carl Palmiscado AND Lewis A. Clark to me well known, and known to me to be the individuals described in and who executed the foregoing instrument as President and Secretary of DCA of Palm Beach Inc. a corporation, and they severally acknowledged to and before me that they executed such instrument as such officers of said corporation and that the seal affixed to the foregoing instrument is the corporate seal of said corporation and that it was affixed to said instrument by due and regular corporate authority and that said instrument is the free act and deed of said Corporation.  
WITNESS my hand and official seal, this 22nd day of February, A.D. 1960.  
By: [Signature] Notary Public  
My Commission Expires: 02-22-1962

STATE OF FLORIDA  
COUNTY OF PALM BEACH  
I, Joel P. Koepfel, a duly licensed attorney in the State of Florida, do hereby certify that I have examined the title to the herein described property; that I find the title to the property is vested in [Name] and that the current taxes have been paid; and that I find that the property is encumbered by the mortgages shown hereon; and that I find all mortgages are shown and are timely noted.

Date: [Date] By: [Signature] Attorney at Law

### COUNTY APPROVALS

COUNTY ENGINEER  
This plat is hereby approved for record this 19th day of March, A.D. 1960.  
By: [Signature] Herbert F. Kohler, P.E. County Engineer  
BOARD OF COUNTY COMMISSIONERS  
PALM BEACH COUNTY, FLORIDA  
This plat is hereby approved for record this 18th day of March, A.D. 1960.  
By: [Signature] DENNIS P. KOEHLER Chairman Board of County Commissioners

ATTEST: John B. Dunkie CLERK BOARD OF COUNTY COMMISSIONERS  
By: [Signature] John B. Dunkie Deputy Clerk

### SURVEYOR'S CERTIFICATION

I hereby certify that the plat shown hereon is a true and correct representation of a survey, made under my responsible direction and supervision, and that said survey is accurate to the best of my knowledge and belief, and that (P.R.M.'s) Permanent Reference Monuments have been placed as required by law and that (P.C.P.'s) Permanent Control Points will be set under the guarantee posted with Palm Beach County, Florida, for the required improvements; and further that the survey data complies with all the requirements of Chapter 177, Florida Statutes, as amended and ordinances of the County of Palm Beach, Florida.  
Date: FEBRUARY 26, 1960 By: [Signature] LAWRENCE A. MATTHEWS, P.L.S. Florida Cert. No. 2204

### NOTES

- Permanent Reference Monuments (P.R.M.'s) are designated thus: [Symbol]
- Permanent Control Points (P.C.P.'s) are designated thus: [Symbol]
- Bearings cited herein are in the meridian of Plat No. 3 "THE FOREST HOMES", Plat Book 36, Pages 9 and 10.
- Building setback lines shall be as required by Palm Beach County Zoning Ordinance.
- There shall be no buildings or other structures placed on utility easements.

Field Book No. [ ]  
No. [ ]  
SHEET [ ]  
DRAWN BY [ ]  
CHECKED BY [ ]  
ROBERT E. OWEN & ASSOCIATES, INC.  
ENGINEERS, PLANNERS, SURVEYORS  
WEST PALM BEACH, FLORIDA

0243-003  
39/101  
PLAT NO. 6  
"THE FOREST HOMES"