

39-124

# PLAT OF CONCEPT HOMES OF LANTANA PLAT NO. 3

BEING A PORTION OF SECTION 1, TOWNSHIP 45 SOUTH, RANGE 42 EAST

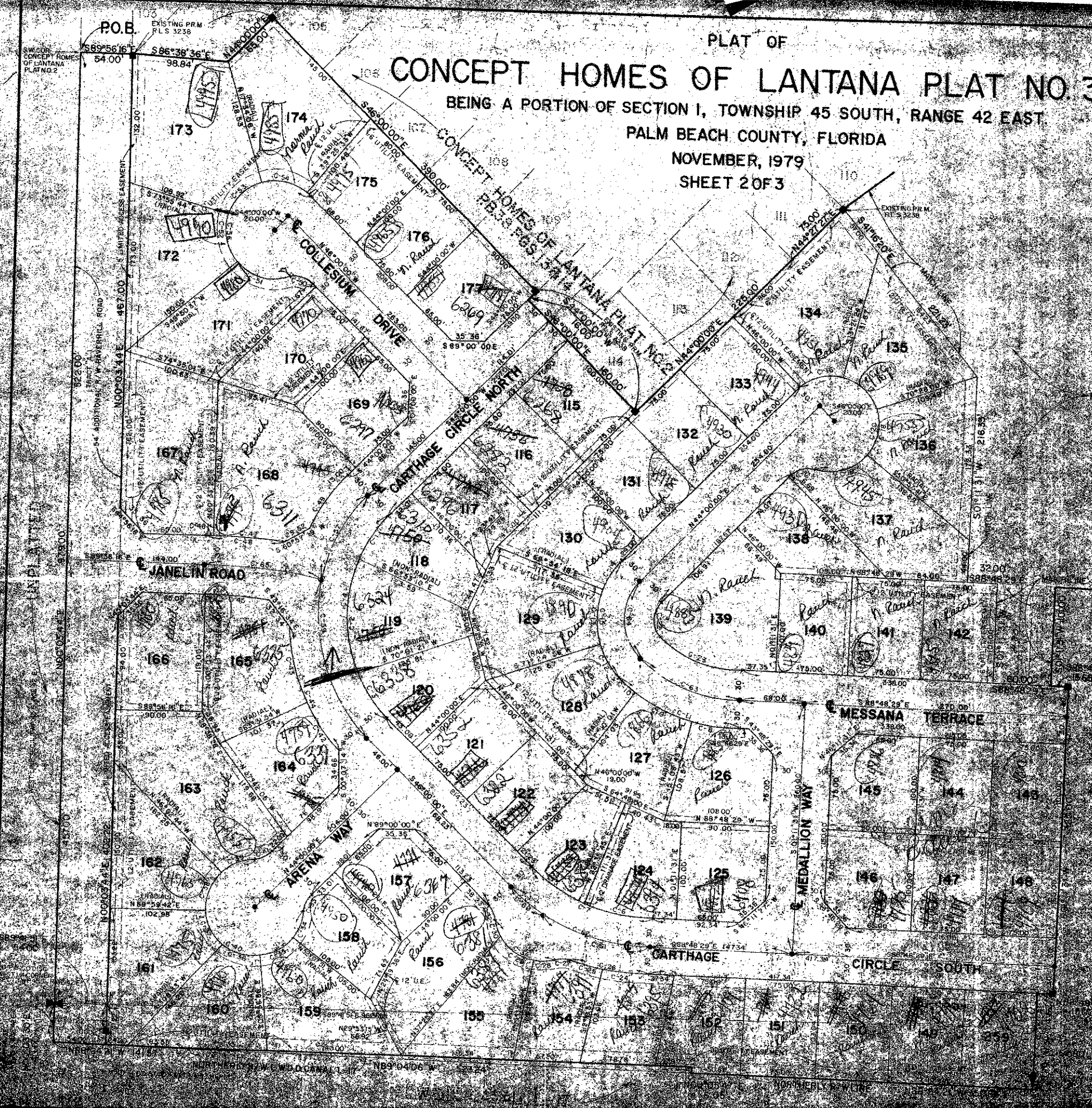
PALM BEACH COUNTY, FLORIDA

NOVEMBER, 1979

SHEET 2 OF 3



(TRACT #1)  
RECREATION AREA & WATER MANAGEMENT STRAT.  
(SEE SHEET 3 OF 3)



0223-306

CONCEPT 16