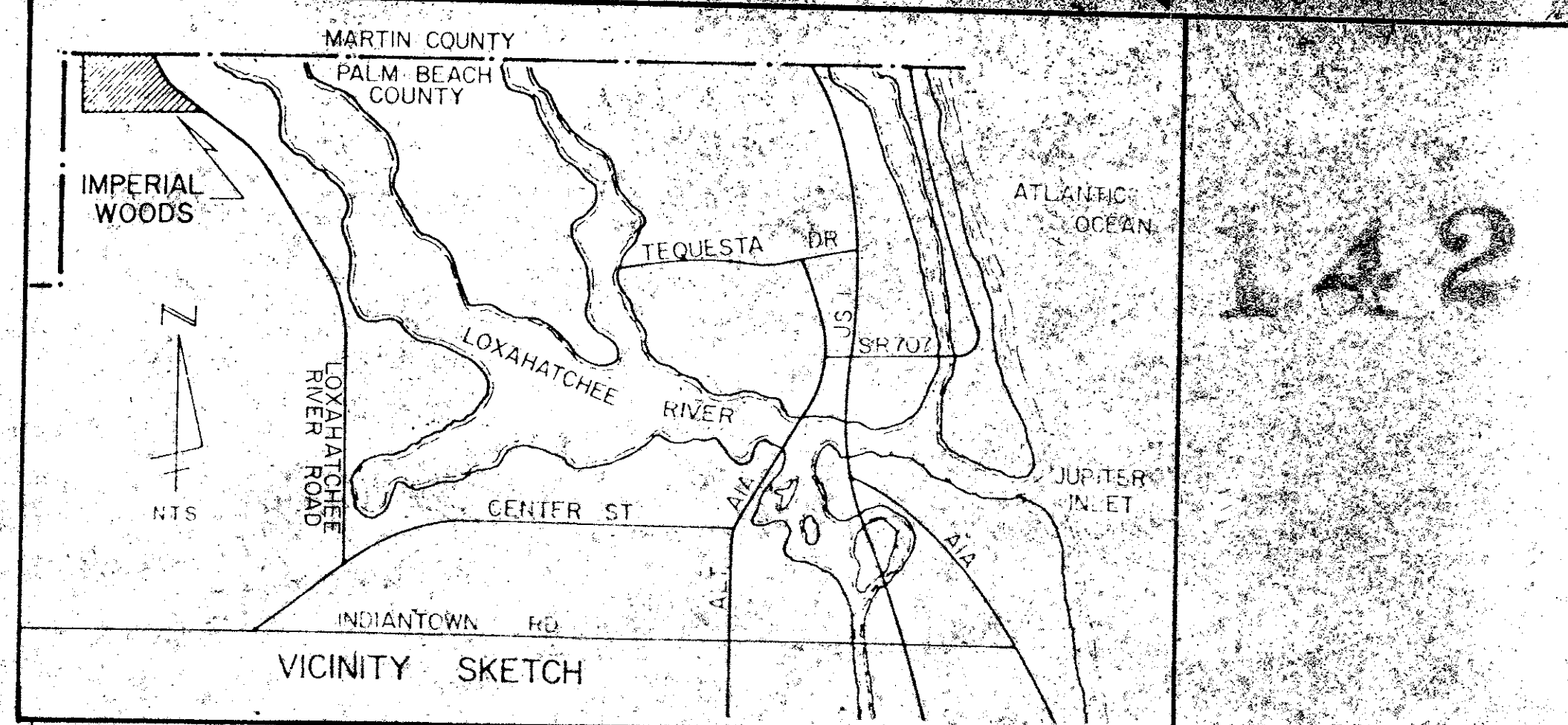


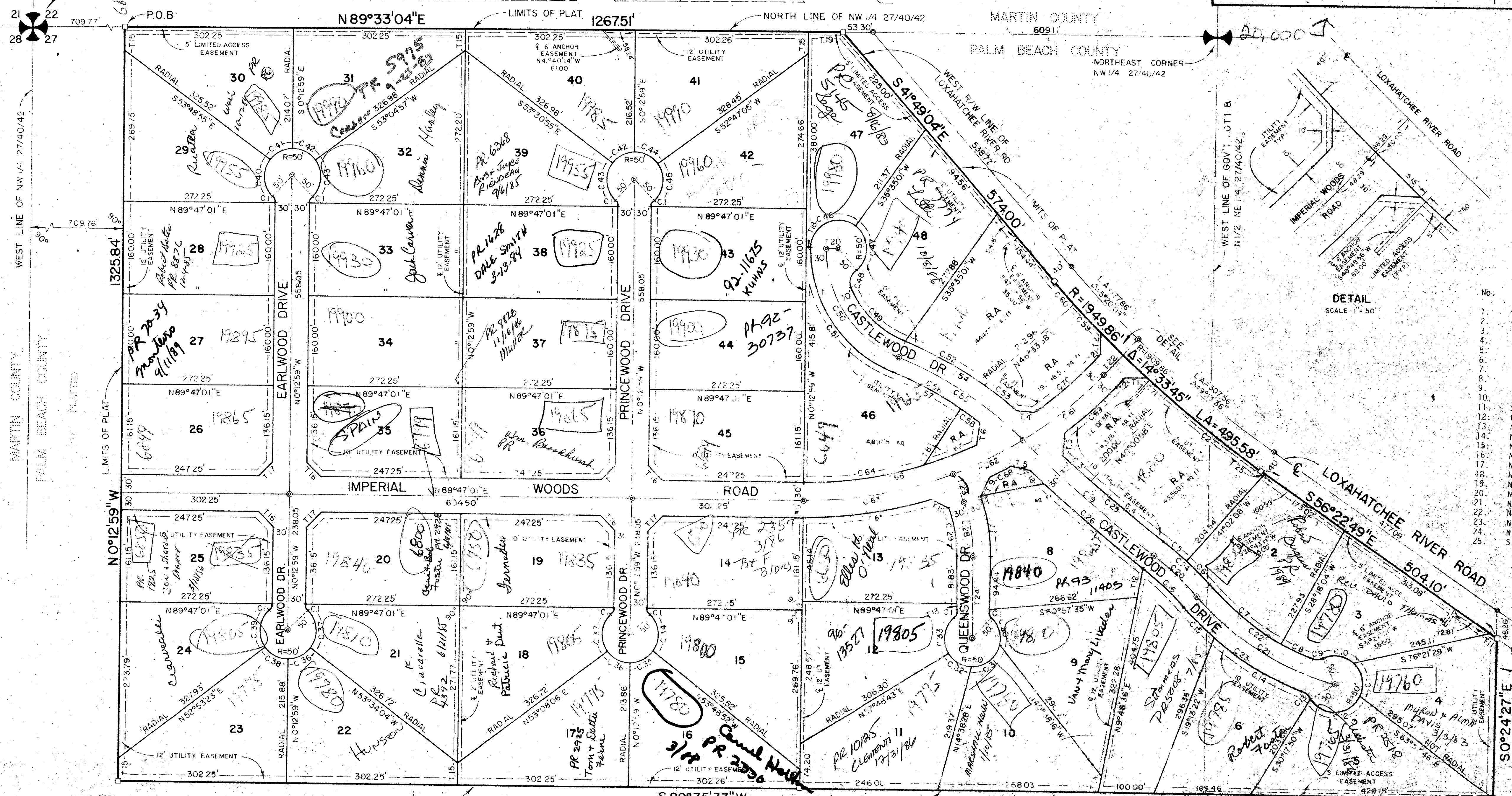
PLAT OF IMPERIAL WOODS

IN SECTION 27, TOWNSHIP 40 SOUTH, RANGE 42 EAST.
PALM BEACH COUNTY, FLORIDA.



142

NORTHWEST CORNER
SECTION 27, TOWNSHIP 40 SOUTH,
RANGE 42 EAST, PALM BEACH
COUNTY, FLORIDA



TANGENT DATA

No.	Bearing	Length
1.	N. 87° 02' 55" E	34.86'
2.	S. 1° 21' 20" E	34.86'
3.	N. 1° 52' 11" E	38.43'
4.	N. 88° 08' 48" W	30.82'
5.	S. 83° 37' 06" E	29.38'
6.	S. 5° 07' 12" W	42.67'
7.	N. 78° 00' 00" E	123.78'
8.	S. 32° 48' 47" W	127.02'
9.	N. 29° 30' 06" E	34.09'
10.	S. 64° 28' 51" E	15.78'
11.	S. 56° 22' 49" E	50.46'
12.	N. 9° 48' 36" E	35.36'
13.	N. 0° 12' 59" W	13.01'
14.	N. 9° 48' 36" E	40.00'
15.	N. 45° 12' 59" W	35.36'
16.	N. 44° 47' 01" E	35.36'
17.	N. 89° 47' 01" E	5.00'
18.	N. 89° 33' 04" E	58.50'
19.	N. 89° 47' 01" E	20.00'
20.	N. 42° 50' 47" E	24.06'
21.	N. 42° 50' 47" E	58.29'
22.	N. 21° 29' 22" W	53.07'
23.	N. 0° 12' 59" W	141.75'
24.	S. 56° 22' 49" E	2.22'

CURVE DATA

No.	Radius	Delta	Arc Length	No.	Radius	Delta	Arc Length	No.	Radius	Delta	Arc Length	No.	Radius	Delta	Arc Length
1.	15.00'	46° 11' 13"	12.09'	19.	2179.86'	7° 51' 00"	298.66'	37.	50.00'	53° 06' 22"	46.34'	55.	653.40'	1° 11' 24"	134.62'
2.	1949.86'	6° 22' 57"	217.21'	20.	500.00'	12° 13' 30"	106.68'	38.	50.00'	83° 04' 21"	72.50'	56.	653.40'	3° 43' 11"	42.42'
3.	2149.86'	1° 38' 12"	61.41'	21.	500.00'	33° 48' 24"	295.02'	39.	50.00'	82° 35' 16"	72.07'	57.	1949.86'	2° 07' 55"	72.27'
4.	2149.86'	4° 24' 09"	165.19'	22.	470.00'	27° 36' 36"	226.48'	40.	50.00'	53° 35' 56"	46.77'	58.	1949.86'	1° 36' 58"	55.06'
5.	530.00'	5° 26' 09"	62.80'	23.	530.00'	28° 15' 31"	261.40'	41.	50.00'	53° 17' 56"	46.51'	59.	730.00'	1° 15' 20"	27.08'
6.	530.00'	6° 47' 21"	62.80'	24.	530.00'	12° 13' 30"	113.08'	42.	50.00'	82° 53' 17"	72.33'	60.	730.00'	1° 15' 20"	27.08'
7.	470.00'	19° 31' 25"	160.15'	25.	2149.86'	6° 02' 21"	226.60'	43.	50.00'	82° 53' 17"	72.33'	61.	730.00'	1° 15' 20"	27.08'
8.	470.00'	8° 05' 11"	66.33'	26.	2209.86'	6° 46' 23"	261.24'	44.	50.00'	83° 11' 09"	72.59'	62.	730.00'	1° 15' 20"	27.08'
9.	25.00'	46° 01' 19"	20.08'	27.	296.23'	21° 16' 23"	109.99'	45.	50.00'	125° 48' 00"	109.78'	63.	730.00'	1° 15' 20"	27.08'
10.	50.00'	61° 04' 14"	53.29'	28.	266.23'	21° 16' 23"	98.85'	46.	50.00'	105° 10' 38"	91.78'	64.	700.00'	1° 15' 20"	27.08'
11.	50.00'	83° 57' 08"	73.26'	29.	236.23'	21° 16' 23"	87.71'	47.	50.00'	74° 40' 14"	32.58'	65.	760.00'	1° 15' 20"	27.08'
12.	50.00'	120° 28' 57"	105.14'	30.	50.00'	80° 00' 00"	69.81'	48.	325.00'	45° 28' 01"	134.90'	66.	700.00'	1° 15' 20"	27.08'
13.	25.00'	40° 07' 54"	17.51'	31.	50.00'	80° 00' 00"	69.81'	49.	370.00'	45° 28' 01"	134.90'	67.	700.00'	1° 15' 20"	27.08'
14.	530.00'	20° 16' 52"	186.68'	32.	50.00'	58° 01' 42"	50.64'	50.	200.00'	69° 09' 38"	272.63'	68.	760.00'	1° 15' 20"	27.08'
15.	530.00'	8° 04' 39"	74.92'	33.	50.00'	78° 09' 31"	68.21'	51.	230.00'	69° 09' 38"	241.42'	69.	760.00'	1° 15' 20"	27.08'
16.	470.00'	12° 13' 30"	100.26'	34.	80.00'	82° 35' 20"	72.07'	52.	713.40'	13° 20' 23"	166.10'	70.	730.00'	1° 15' 20"	27.08'
17.	2209.86'	6° 41' 20"	219.42'	35.	50.00'	53° 21' 05"	46.77'	53.	713.40'	6° 00' 39"	74.84'	71.	1449.86'	1° 15' 20"	27.08'
18.	2209.86'	1° 05' 03"	41.82'	36.	50.00'	53° 21' 05"	46.77'	54.	713.40'	19° 21' 02"	240.94'				
				37.	50.00'	82° 50' 08"	72.29'	55.	683.40'	22° 49' 36"	272.27'				
								56.	653.40'	15° 54' 35"	181.44'				

This instrument was prepared by Craig L. Wallace, at the office of William G. Wallace, Inc., 321 Northlake Blvd., Suite 109, North Palm Beach, Florida 33408

0258-001 RS
Snap #1
FS. 1
FZ No.

39/142
PLAT OF
IMPERIAL WOODS

WILLIAM G. WALLACE, INC.
Consulting Engineers & Land Surveyors
321 Northlake Blvd., North Palm Beach, Florida

FILED: _____ DATE: _____ 1978
OFFICE: W.D. _____ DATE: _____ 1978
DRAWN BY: _____ DATE: _____ 1978
CHECKED BY: _____ DATE: _____ 1978