

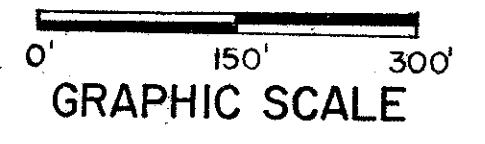
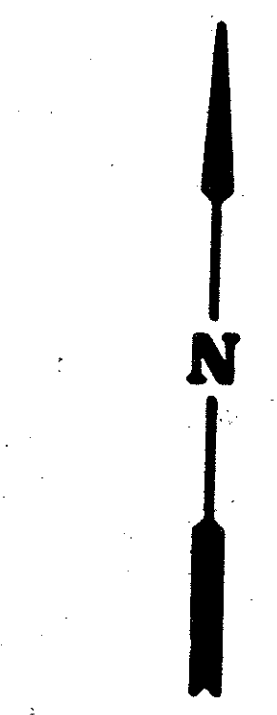
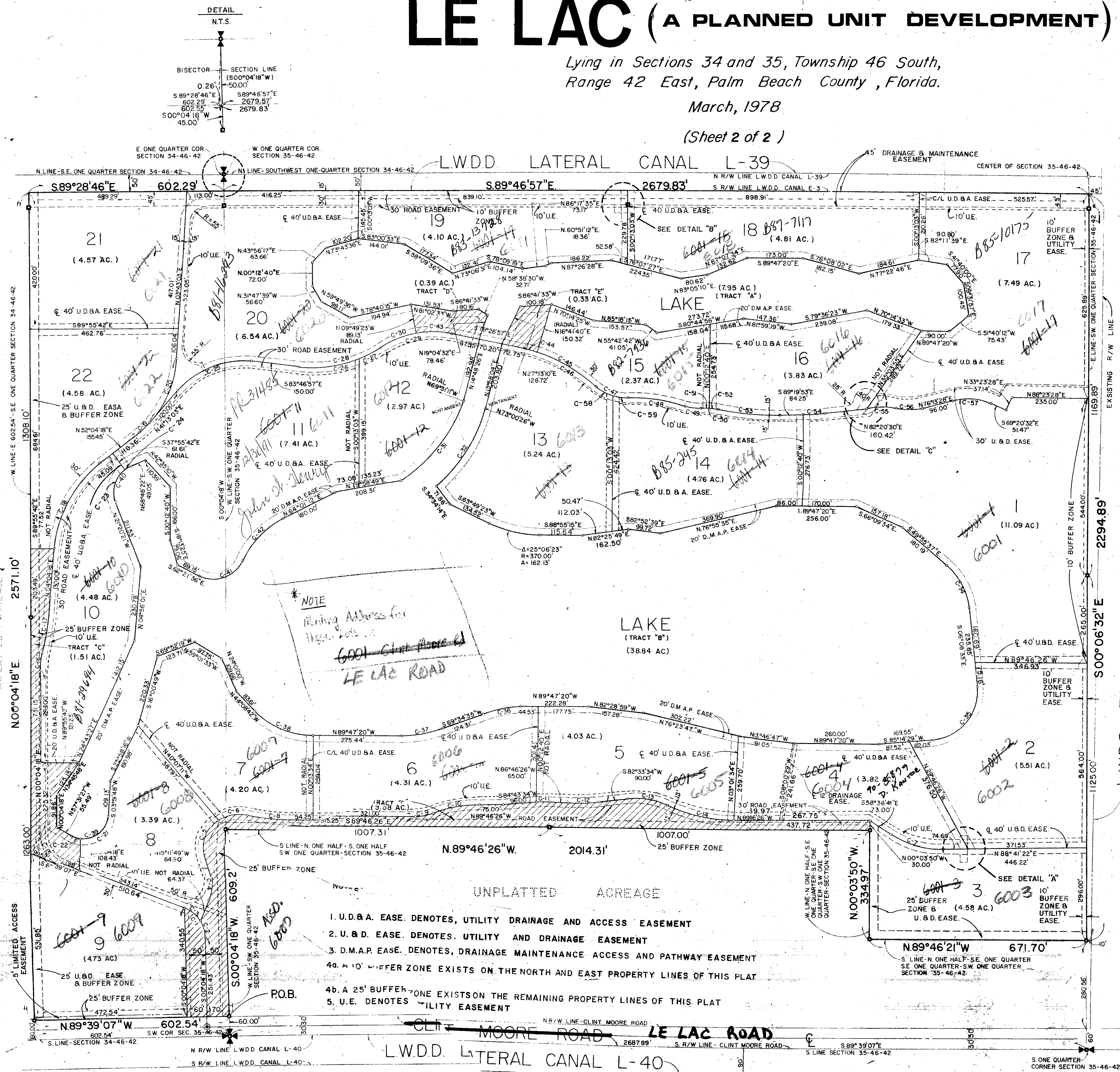
LE LAC (A PLANNED UNIT DEVELOPMENT)

Lying in Sections 34 and 35, Township 46 South,
Range 42 East, Palm Beach County, Florida.

March, 1978

(Sheet 2 of 2)

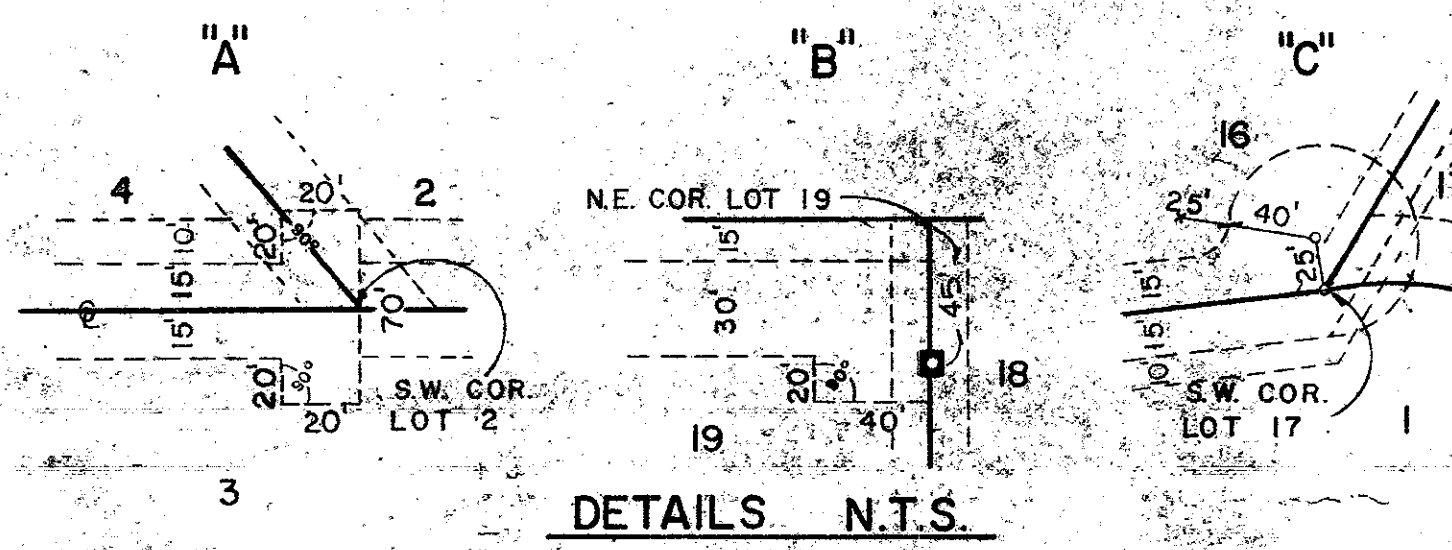
STATE OF FLORIDA
COUNTY OF PALM BEACH
THIS PLAT WAS FILED FOR
RECORD AT _____ M,
THIS _____ DAY OF _____
A.D., 1978 AND DULY RE-
CORDED IN PLAT BOOK _____
ON PAGES _____ AND _____
BY: _____ DC



C. NO.	CENT. ANG.	RADIUS	ARC	CHORD	TANGENT
C-1	67°43'25"	96.63'	114.22'	107.68'	64.84'
C-2	28°47'57"	96.63'	48.57'	48.06'	24.81'
C-3	38°55'28"	96.63'	65.85'	64.39'	34.13'
C-4	39°56'35"	100.00'	104.57'	102.47'	54.51'
C-5	73°42'11"	100.00'	128.64'	119.95'	47.69'
C-6	40°17'33"	130.00'	91.42'	89.55'	47.69'
C-7	32°41'57"	300.00'	171.21'	168.90'	88.01'
C-8	8°34'21"	1000.00'	149.62'	149.48'	74.95'
C-9	22°00'00"	150.00'	57.60'	57.24'	29.16'
C-10	22°00'00"	380.00'	145.91'	145.01'	73.86'
C-11	8°30'00"	320.00'	47.47'	47.43'	23.78'
C-12	10°40'00"	500.00'	93.08'	92.95'	46.68'
C-13	32°00'15"	210.00'	212.38'	210.79'	60.22'
C-14	24°20'15"	500.00'	212.38'	211.44'	107.82'
C-15	67°43'25"	100.00'	118.20'	111.44'	67.10'
C-16	15°00'00"	200.00'	52.36'	52.21'	26.33'
C-17	11°00'00"	1000.00'	191.99'	191.69'	96.29'
C-18	48°00'00"	370.00'	309.97'	300.99'	164.73'
C-19	10°51'15"	300.00'	56.83'	56.75'	28.50'
C-20	3°30'00"	300.00'	196.35'	192.86'	101.84'
C-21	95°28'41"	75.00'	124.94'	110.98'	82.49'
C-22	23°10'04"	75.00'	30.33'	30.12'	15.37'
C-23	73°24'39"	85.00'	108.91'	101.61'	65.37'
C-24	16°44'04"	85.00'	24.83'	24.74'	12.30'
C-25	55°00'00"	270.00'	259.18'	249.34'	140.55'
C-26	25°20'37"	400.00'	176.93'	175.49'	89.94'
C-27	12°01'23"	400.00'	83.94'	83.78'	42.12'
C-28	37°22'00"	400.00'	260.87'	256.27'	135.26'
C-29	42°42'00"	300.00'	223.58'	218.44'	117.27'
C-30	21°19'34"	300.00'	111.66'	111.02'	56.48'
C-31	36°29'45"	500.00'	318.49'	313.13'	164.85'
C-32	32°34'13"	500.00'	284.23'	280.42'	145.07'
C-33	25°06'23"	370.00'	162.13'	160.84'	82.39'
C-34	43°47'04"	200.00'	152.84'	149.14'	80.37'
C-35	91°23'02"	150.00'	239.24'	214.68'	153.17'
C-36	20°38'05"	350.00'	126.05'	125.37'	63.72'
C-37	20°38'05"	370.00'	133.25'	132.53'	67.36'
C-38	45°38'38"	250.00'	199.16'	193.93'	105.20'
C-39	118°36'45"	75.00'	155.26'	128.99'	126.35'
C-40	90°08'43"	85.00'	133.73'	120.36'	85.22'
C-41	92°23'03"	100.00'	161.24'	144.33'	104.25'
C-42	38°45'51"	270.00'	182.67'	179.21'	94.99'
C-43	21°22'26"	300.00'	111.91'	111.27'	56.62'
C-44	5°08'37"	500.00'	44.89'	44.87'	22.46'
C-45	23°50'10"	500.00'	208.01'	206.51'	105.53'
C-46	28°58'46"	500.00'	252.89'	250.21'	129.21'
C-47	40°18'46"	150.00'	105.54'	103.38'	55.06'
C-48	17°42'55"	174.50'	174.54'	173.85'	87.97'
C-49	18°49'19"	149.34'	49.06'	48.84'	24.75'
C-50	12°42'24"	222.31'	49.30'	49.20'	24.75'
C-51	6°23'09"	222.31'	24.78'	24.76'	12.40'
C-52	6°19'15"	222.31'	24.52'	24.51'	12.27'
C-53	11°08'57"	991.79'	192.99'	192.69'	96.80'
C-54	8°19'36"	272.73'	39.64'	39.60'	19.85'
C-55	17°18'11"	300.00'	93.48'	93.10'	47.12'
C-56	185.00'	77.40'	76.83'	76.83'	39.27'
C-57	34°26'00"	200.00'	120.19'	118.39'	61.97'
C-58	20°50'30"	150.00'	54.56'	54.26'	27.59'
C-59	19°28'16"	150.00'	50.98'	50.73'	25.74'

NOTE
Missing Address for
6001 - Client Address
LE LAC ROAD

1. U.D.A. EASE. DENOTES, UTILITY DRAINAGE AND ACCESS EASEMENT
2. U.B.D. EASE. DENOTES, UTILITY AND DRAINAGE EASEMENT
3. D.M.A.P. EASE. DENOTES, DRAINAGE MAINTENANCE ACCESS AND PATHWAY EASEMENT
4. A 10' BUFFER ZONE EXISTS ON THE NORTH AND EAST PROPERTY LINES OF THIS PLAT
- 4b. A 25' BUFFER ZONE EXISTS ON THE REMAINING PROPERTY LINES OF THIS PLAT
5. U.E. DENOTES UTILITY EASEMENT



BENCH MARK
land surveying and mapping, inc.
2900 PALM BEACH LAKES BLVD., SUITE #200, WEST PALM BEACH, FLORIDA 33411
LE LAC (P.U.D.)
OWN: [] CKD: [] DATE: 10-6-79 WD. NO. 79-135
SCALE: [] SIZE: [] FB: [] SHEET: 2 OF 2

39/146
0272-600
ret. 77-65