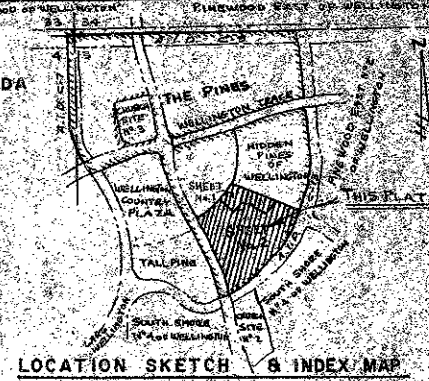
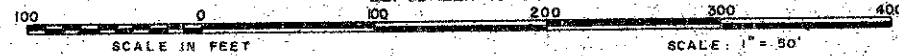


TREE TOPS OF WELLINGTON - P.U.D.

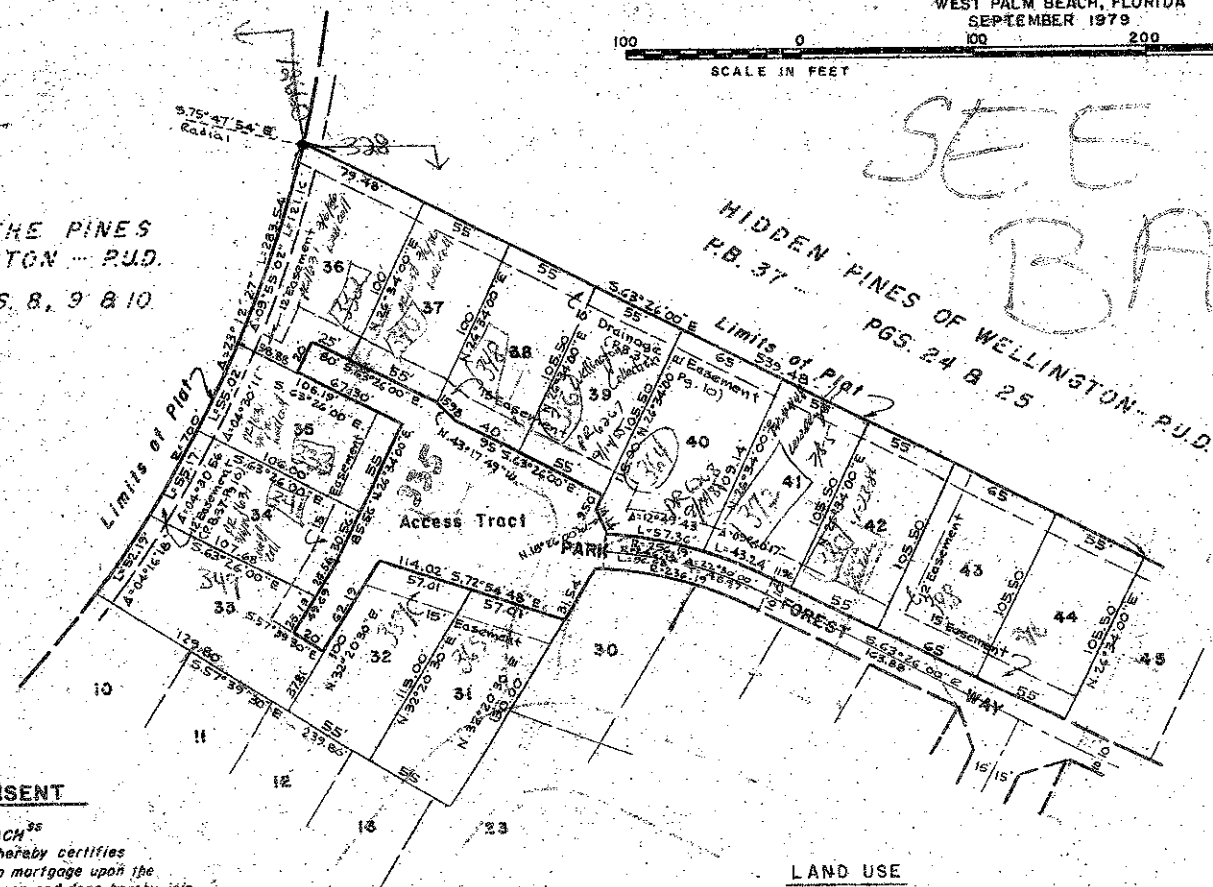
BEING A REPLAT OF TRACT A, THE PINES OF WELLINGTON - P.U.D., P.B. 37, PGS. 8 TO 10, INCL., PUBLIC RECORDS OF PALM BEACH COUNTY, FLORIDA
IN PART OF SECTION 3, TWP. 44 S., RGE. 41 E.
PALM BEACH COUNTY, FLORIDA
IN 2 SHEETS SHEET NO. 1

GEE & JENSON
ENGINEERS-ARCHITECTS-PLANNERS, INC.
WEST PALM BEACH, FLORIDA
SEPTEMBER 1979



STATE OF FLORIDA
COUNTY OF PALM BEACH
This plat was filed for record on this day of February, 1980, and duly recorded in Plat Book No. 37, Page 24 B 25.

TRACT 'C' - THE PINES OF WELLINGTON - P.U.D.
P.B. 37 - PGS. 8, 9 & 10



MORTGAGE CONSENT

STATE OF FLORIDA
COUNTY OF PALM BEACH
THE UNDERSIGNED hereby certifies that it is the holder of a mortgage upon the property described hereon and does hereby join in and consents to the dedication of the land described in said dedication by the owner thereof and agrees that its mortgage which is recorded in Official Record Book 3144, page 21, of the Public Records of Palm Beach County, Florida, shall be subordinate to the dedication shown hereon.

IN WITNESS WHEREOF, Trustees of General Electric Pension Trust, by and through GUERRY STRIBLING, the President of GOULD FLORIDA INC., a Delaware Corporation, as Attorney-in-Fact and on behalf of and in the name of Trustees of General Electric Pension Trust, pursuant to the Power of Attorney given to the President or any Vice President of GOULD FLORIDA INC., a Delaware Corporation, by Trustees of General Electric Pension Trust, dated September 27, 1979, and recorded in Official Record Book 3146, page 1171, of the Public Records of Palm Beach County, Florida, which Power of Attorney is in force and is unrevoked, do hereby set my hand and seal this 2nd day of MARCH, 1980.

By: Guerry Stribling
Guerry Stribling, President of Gould Florida Inc., as Attorney-in-Fact for Trustees of General Electric Pension Trust.

ACKNOWLEDGMENT

STATE OF FLORIDA
COUNTY OF PALM BEACH
BEFORE ME, personally appeared GUERRY STRIBLING, to me well known, and known to me to be the individual described in and who executed the foregoing instrument as President of Gould Florida Inc., a Delaware Corporation, as Attorney-in-Fact of Trustees of General Electric Pension Trust, duly authorized to execute this instrument in the name of General Electric Pension Trust, the mortgagee, and acknowledged to and before me that he executed such instrument for the purpose expressed therein and that he executed the same under authority duly vested in him by General Electric Pension Trust.

Witness my hand and official seal this 2nd day of MARCH, 1980.
Jack H. Casler
Notary Public
My Commission Expires: JAN 23 1984

LAND USE

Total Lots	108 Units
Tracts A, B, C, D, E, F & G (O.S.R.)	2.44 Acres
Private Road	1.01 Acres
Access Tracts	2.91 Acres
Lot Area	15.99 Acres
Total Area in Plat	22.35 Acres
Density	4.83 DU/Acre

NOTES

All bearings shown hereon are relative to an assumed meridian used throughout Wellington.
Building Setback Lines shall be as required by Palm Beach County Zoning Regulations.
There shall be no buildings or other structures placed on Utility Easements.
There shall be no buildings or any kind of construction or trees or shrubs placed on Drainage Easements.
● denotes Permanent Reference Monument.
○ denotes Permanent Control Point.
Easements are for Public Utilities, unless otherwise noted.

APPROVALS

ACME IMPROVEMENT DISTRICT
This plat is hereby approved for record, this 8 day of FEBRUARY, 1980.
By: Madison F. Pacetti
Madison F. Pacetti - Secretary
Attest: A.W. Gibson
A.W. Gibson - General Manager

PALM BEACH COUNTY BOARD OF COUNTY COMMISSIONERS
This plat is hereby approved for record, this 13th day of February, 1980.
By: Dennis P. Koehler
Dennis P. Koehler - Chairman

Attest: JOHN B. DUNKLE, Clerk
By: Charles E. Schuchert
Deputy Clerk

COUNTY ENGINEER
This plat is hereby approved for record, this 13th day of February, 1980.
By: William G. Wallace
William G. Wallace - County Engineer

DESCRIPTION & DEDICATION

STATE OF FLORIDA
COUNTY OF PALM BEACH
KNOW ALL MEN BY THESE PRESENTS, that GOULD FLORIDA INC., a Delaware Corporation licensed to do business in Florida, owner of the land shown hereon, being in part of Section 3, Township 44 South, Range 41 East, Palm Beach County, Florida, shown hereon as TREE TOPS OF WELLINGTON - P.U.D., being more particularly described as follows:
Being all of Tract 'A', THE PINES OF WELLINGTON - P.U.D. as recorded in Plat Book 37, Pages 8 through 10, inclusive, shown on Sheet No. 3, Public Records of Palm Beach County, Florida.
have caused the same to be surveyed and replatted as shown hereon and do hereby dedicate as follows:
The Utility Easements and Drainage Easements as shown are hereby dedicated, in perpetuity, for the construction and maintenance of utilities and drainage.
The Limited Access Easements as shown are dedicated to the Board of County Commissioners of Palm Beach County, Florida, for the purposes of control and jurisdiction over access rights.
The Streets and Access Tracts as shown are for Private Road Purposes, Utilities and Drainage.
Tracts A, B, C, D, E, F & G as shown are for Open Space and Recreation (O.S.R.); all are hereby dedicated to TREE TOPS HOMEOWNERS ASSOCIATION, INC. and are the perpetual maintenance obligation of said Association.
The use of the Maintenance Easement as shown is hereby dedicated to Acme Improvement District for Canal Maintenance purposes.
IN WITNESS WHEREOF, the above named corporation has caused these presents to be signed by its President and attested by its Assistant Secretary and its corporate seal to be affixed hereto by and with the authority of its Board of Directors, this 8th day of FEBRUARY, 1980.

GOULD FLORIDA INC., a Corporation of the State of Delaware
Attest: James J. Ogorek Assistant Secretary By: Guerry Stribling President

ACKNOWLEDGMENT

STATE OF FLORIDA
COUNTY OF PALM BEACH
BEFORE ME personally appeared GUERRY STRIBLING and JAMES J. OGOREK, to me well known and known to me to be the individuals described in and who executed the foregoing instrument as President and Assistant Secretary of GOULD FLORIDA INC., a Delaware Corporation, and severally acknowledged to and before me that they executed such instrument as such officers of said Corporation, and that the seal affixed to the foregoing instrument is the corporate seal of said Corporation and that it was affixed to said instrument by due and regular corporate authority, and that said instrument is the free act and deed of said Corporation.
WITNESS my hand and official seal this 8th day of FEBRUARY, 1980.
Jack H. Casler
Notary Public
My Commission expires: JAN 23 1984

TITLE CERTIFICATION

STATE OF FLORIDA - COUNTY OF PALM BEACH
I, LARRY ALEXANDER, a duly licensed Attorney in the State of Florida do hereby certify that I have examined the title to the hereon described property; that I find the title to the property is vested in GOULD FLORIDA INC., a Delaware Corporation; that the current taxes have been paid; and that I find the property is encumbered by the mortgage shown hereon, and I find that all mortgages are shown and are true and correct, and the property is found to contain deed reservations which are not applicable, and do not affect the subdivision of the property.
Larry Alexander
Larry Alexander - Attorney at Law
Licensed in Florida Date MARCH 2, 1980

SURVEYOR'S CERTIFICATION

STATE OF FLORIDA - COUNTY OF PALM BEACH
KNOW ALL MEN BY THESE PRESENTS, that the undersigned does hereby certify that on MARCH 11, 1980 they completed the survey of lands as shown on the hereon plat; that said plat is a correct representation of the lands hereon described and platted; that permanent reference monuments have been set as shown as required by law, and that permanent control points will be set under the guarantees posted with the Board of County Commissioners of Palm Beach County, Florida, for the required improvements, and that the survey data complies with all requirements of Chapter 177, Part 1, Florida Statutes, as Amended, and Ordinances of Palm Beach County, Florida.
GRAVEN THOMPSON, INC.

SURVEYOR'S CERTIFICATION

STATE OF FLORIDA - COUNTY OF PALM BEACH
KNOW ALL MEN BY THESE PRESENTS, that undersigned does hereby certify that on February 13, 1980 the hereon plat was prepared and delineated under my supervision and is a correct representation of the land hereon described as surveyed by GRAVEN THOMPSON, INC.
GEE & JENSON - Engineers, Architects-Planners, Inc.
William G. Wallace
William G. Wallace, Jr. - Professional Land Surveyor
Florida Registration No. 2243, Date MARCH 13 1980

THIS INSTRUMENT PREPARED BY WILLIAM G. WALLACE, JR. 2219 Gatechase Boulevard West Palm Beach, Florida
TREE TOPS OF WELLINGTON