

DRAWING NUMBER
40-3

DRAWING NUMBER

DRAWING NUMBER

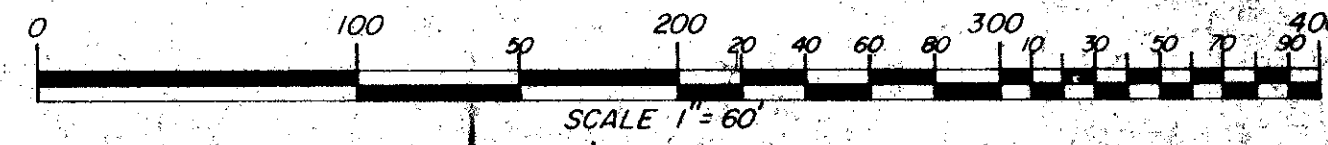
DRAWING NUMBER

WENDIMERE HEIGHTS

A SUBDIVISION IN SECTION 25, TOWNSHIP 40 SOUTH, RANGE 42 EAST
PALM BEACH COUNTY, FLORIDA

SHEET 2 OF 2

JUNE 1978



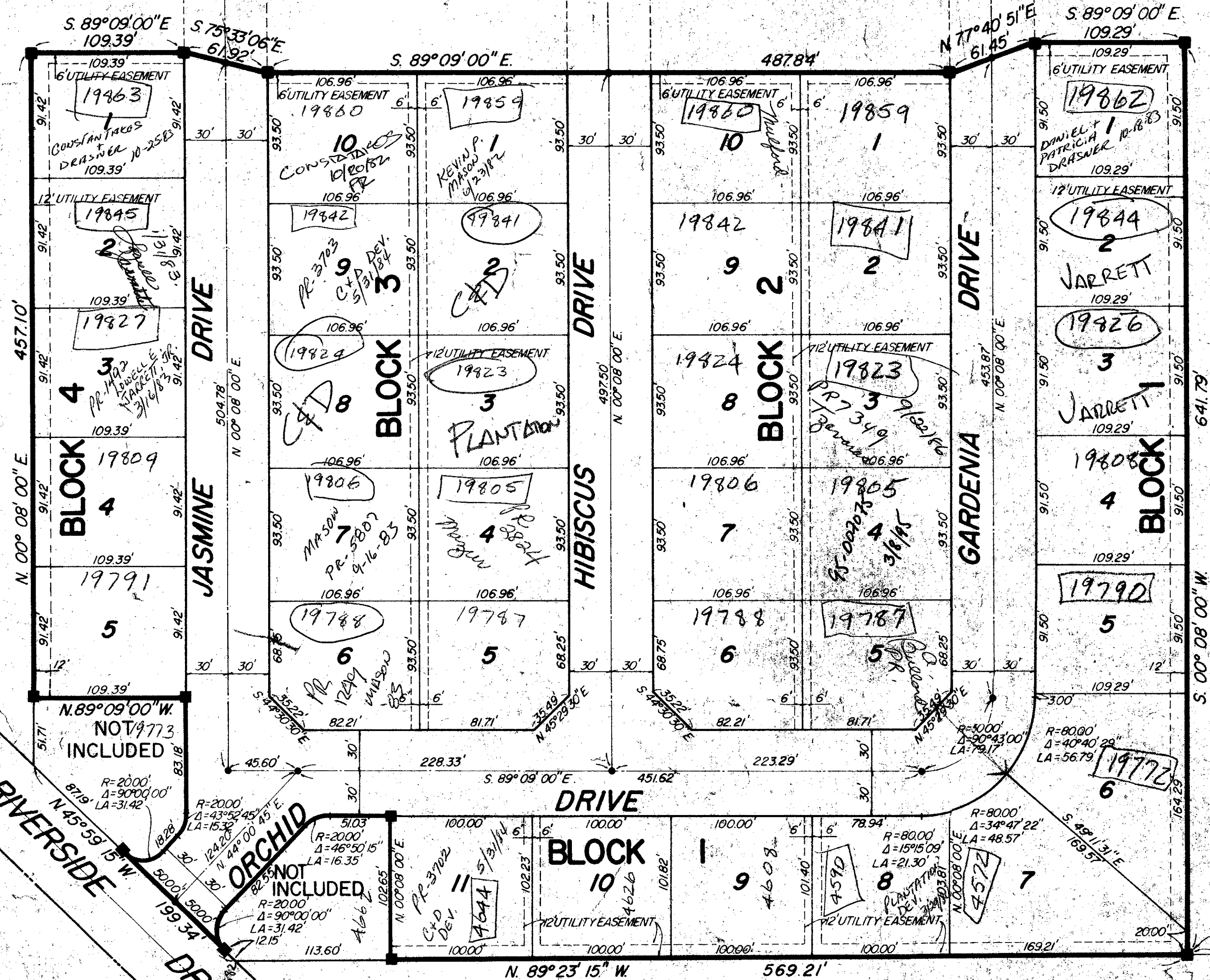
SURVEYOR'S NOTES:

MONUMENTATION:

- DENOTES PERMANENT REFERENCE MONUMENT (P.R.M.)
- DENOTES PERMANENT CONTROL POINT (P.C.P.) SET AS INDICATED.

BEARING BASE: ALL BEARINGS ARE BASED ON THE BEARING EAST LINE OF THE PLAT OF JUPITER RIDGE, PLAT BOOK 26, PAGE 106, PALM BEACH COUNTY, FLORIDA, BEARING BEING S 00°08'00" W.

JUPITER RIDGE P.B. 26, Pg. 106
PALM BEACH COUNTY, FLORIDA



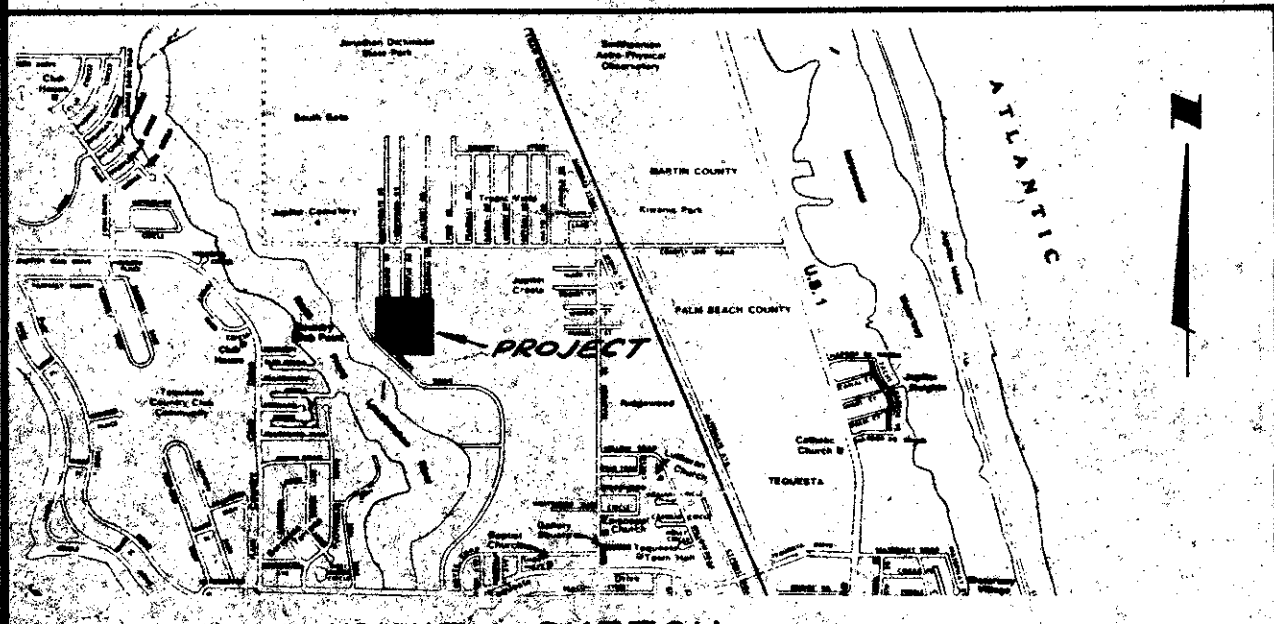
S 89°09'00" E
NORTH EAST CORNER OF THE NORTH WEST 1/4 OF SECTION 25, TOWNSHIP 40 S., RANGE 42 E



UNPLATTED

UNPLATTED

UNPLATTED



VICINITY SKETCH
M.T.S.

0334-000

WENDIMERE HEIGHTS 40/3

LINDAHL, BROWNING & FERRARI, INC.
Consulting Engineers, Planners & Surveyors
426 INDIANTOWN ROAD - 351 COLORADO AVENUE
JUPITER, FLORIDA 33458 - STUART, FLORIDA 33494

2 | 2
Sheet of Sheet

RS
prop
F-5-110

TURNOUT REQUIRED
SIDEWALK REQUIRED