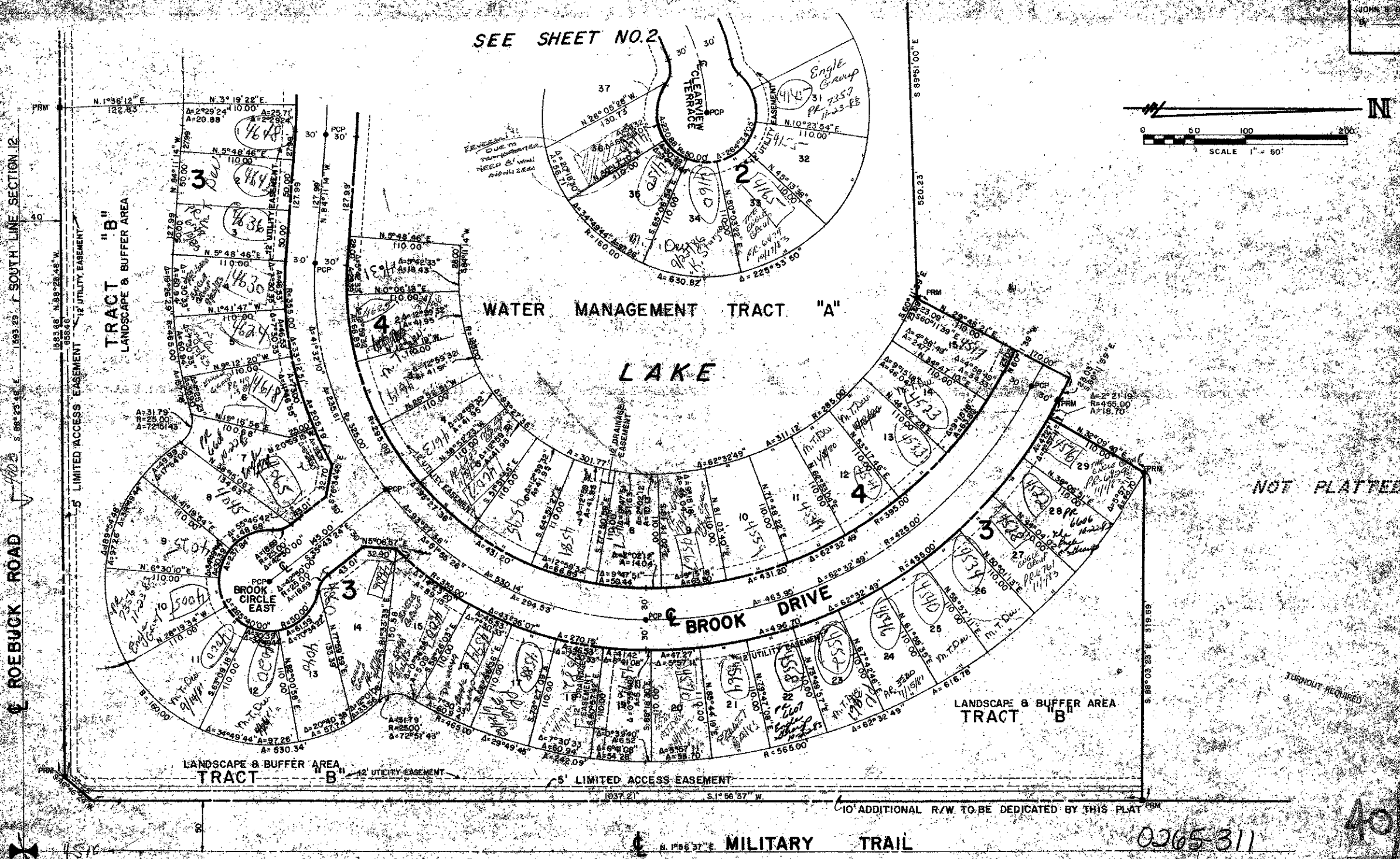


40-22

A PORTION OF A P.U.D.
LAKESIDE GREEN PLAT NO. 1
 SECTION 12, TOWNSHIP 43 SOUTH, RANGE 42 EAST
 PALM BEACH COUNTY, FLORIDA
 IN 3 SHEETS SHEET NO. 3

22

STATE OF FLORIDA
 COUNTY OF PALM BEACH
 This plat was filed for record at
 the office of the Clerk of the
 County on the 17th day of
 1977 and duly recorded in Public
 Records of said County in
 Book 17, Page 177.
 JOHN S. MALAVASI, Clerk of the
 County



1/4 SECTION CORNER

ROSSI AND MALAVASI
 ENGINEERS, INC.
 WEST PALM BEACH,
 FLORIDA

A PORTION OF A P.U.D.
LAKESIDE GREEN-PLAT NO. 1
 IN 3 SHEETS SHEET NO. 3

Prepared	Checked	Drawn
1977		

0265-311 40/22