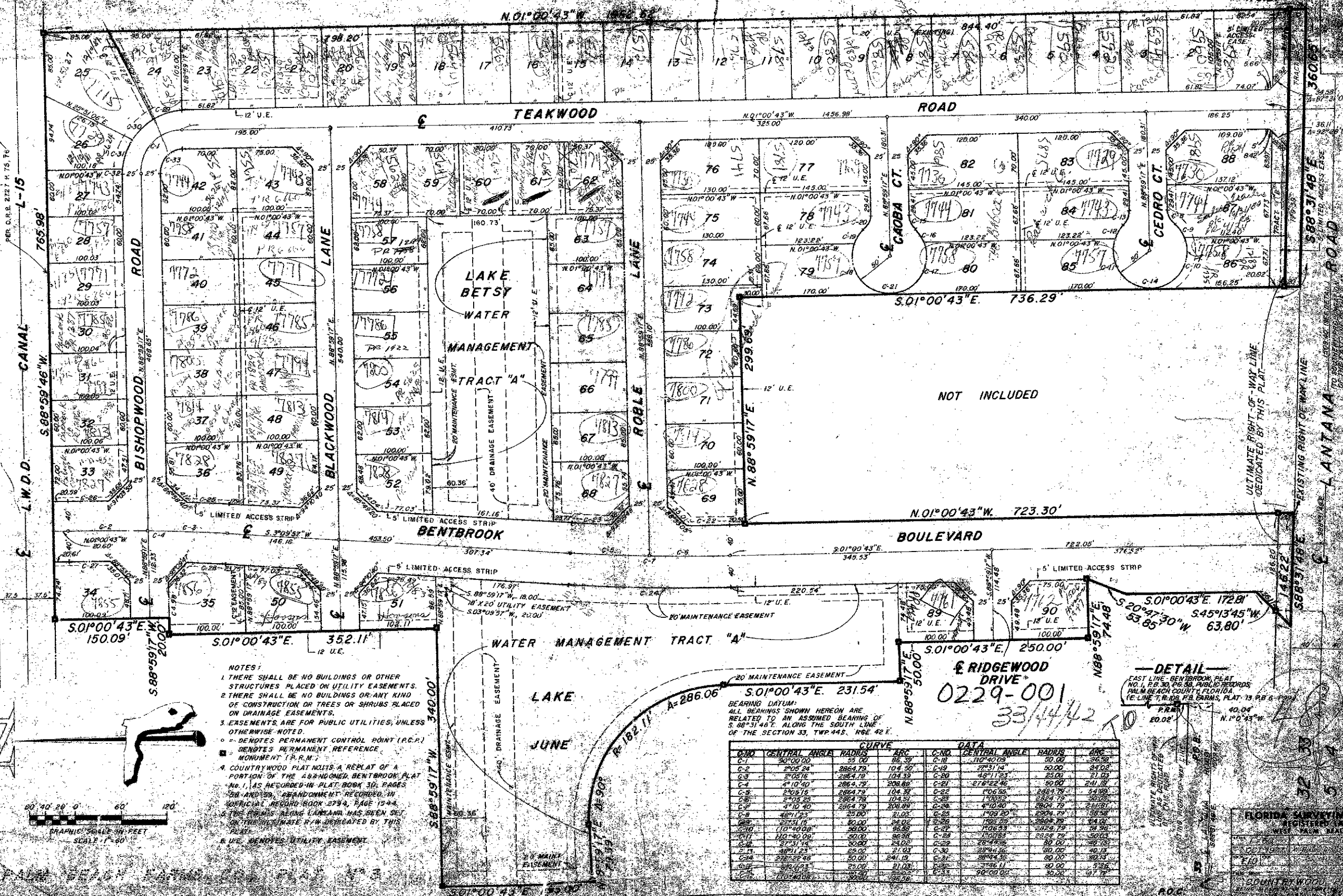


40-32

# COUNTRYWOOD PLAT No 1

BEING A REPLAT OF A PORTION OF PLAT 30, PALM BEACH FARMS CO. IN SECTION 33, TOWNSHIP 44 SOUTH, RANGE 42 EAST, PALM BEACH COUNTY, FLORIDA

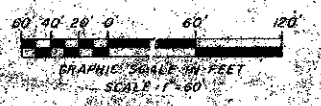
PLAT No 1, PALM BEACH FARMS CO. OCTOBER, 1977



- NOTES:
1. THERE SHALL BE NO BUILDINGS OR OTHER STRUCTURES PLACED ON UTILITY EASEMENTS.
  2. THERE SHALL BE NO BUILDINGS OR ANY KIND OF CONSTRUCTION OR TREES OR SHRUBS PLACED ON DRAINAGE EASEMENTS.
  3. EASEMENTS ARE FOR PUBLIC UTILITIES, UNLESS OTHERWISE NOTED.
    - DENOTES PERMANENT CONTROL POINT (P.C.P.) MONUMENT (P.R.M.)
    - DENOTES PERMANENT REFERENCE MONUMENT (P.R.M.)
  4. COUNTRYWOOD PLAT NO. 1 IS A REPLAT OF A PORTION OF THE ABANDONED BENTBROOK PLAT NO. 1, AS RECORDED IN PLAT BOOK 30, PAGES 28 AND 29, ABANDONMENT RECORDED IN OFFICIAL RECORD BOOK 2794, PAGE 1544.
  5. THE PLAT LANE LANTANA HAS BEEN SET ON THE ULTIMATE R/W DEDICATED BY THIS PLAT.
  6. U.S. DENOTES UTILITY EASEMENT.

CURVE DATA

C-NO	CENTRAL ANGLE	RADIUS	ARC	C-NO	CENTRAL ANGLE	RADIUS	ARC
C-1	90°00'00"	50.00	86.39	C-18	110°40'00"	50.00	92.38
C-2	90°00'00"	50.00	86.39	C-19	110°40'00"	50.00	92.38
C-3	90°00'00"	50.00	86.39	C-20	110°40'00"	50.00	92.38
C-4	90°00'00"	50.00	86.39	C-21	110°40'00"	50.00	92.38
C-5	90°00'00"	50.00	86.39	C-22	110°40'00"	50.00	92.38
C-6	90°00'00"	50.00	86.39	C-23	110°40'00"	50.00	92.38
C-7	90°00'00"	50.00	86.39	C-24	110°40'00"	50.00	92.38
C-8	90°00'00"	50.00	86.39	C-25	110°40'00"	50.00	92.38
C-9	90°00'00"	50.00	86.39	C-26	110°40'00"	50.00	92.38
C-10	90°00'00"	50.00	86.39	C-27	110°40'00"	50.00	92.38
C-11	90°00'00"	50.00	86.39	C-28	110°40'00"	50.00	92.38
C-12	90°00'00"	50.00	86.39	C-29	110°40'00"	50.00	92.38
C-13	90°00'00"	50.00	86.39	C-30	110°40'00"	50.00	92.38
C-14	90°00'00"	50.00	86.39	C-31	110°40'00"	50.00	92.38
C-15	90°00'00"	50.00	86.39	C-32	110°40'00"	50.00	92.38
C-16	90°00'00"	50.00	86.39	C-33	110°40'00"	50.00	92.38
C-17	90°00'00"	50.00	86.39	C-34	110°40'00"	50.00	92.38



FLORIDA SURVEYING & MAPPING INC.  
REGISTERED PROFESSIONAL SURVEYORS  
WEST PALM BEACH, FLORIDA 33409

COUNTRYWOOD PLAT NO. 1  
OCTOBER, 1977