

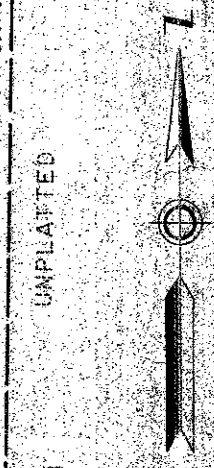
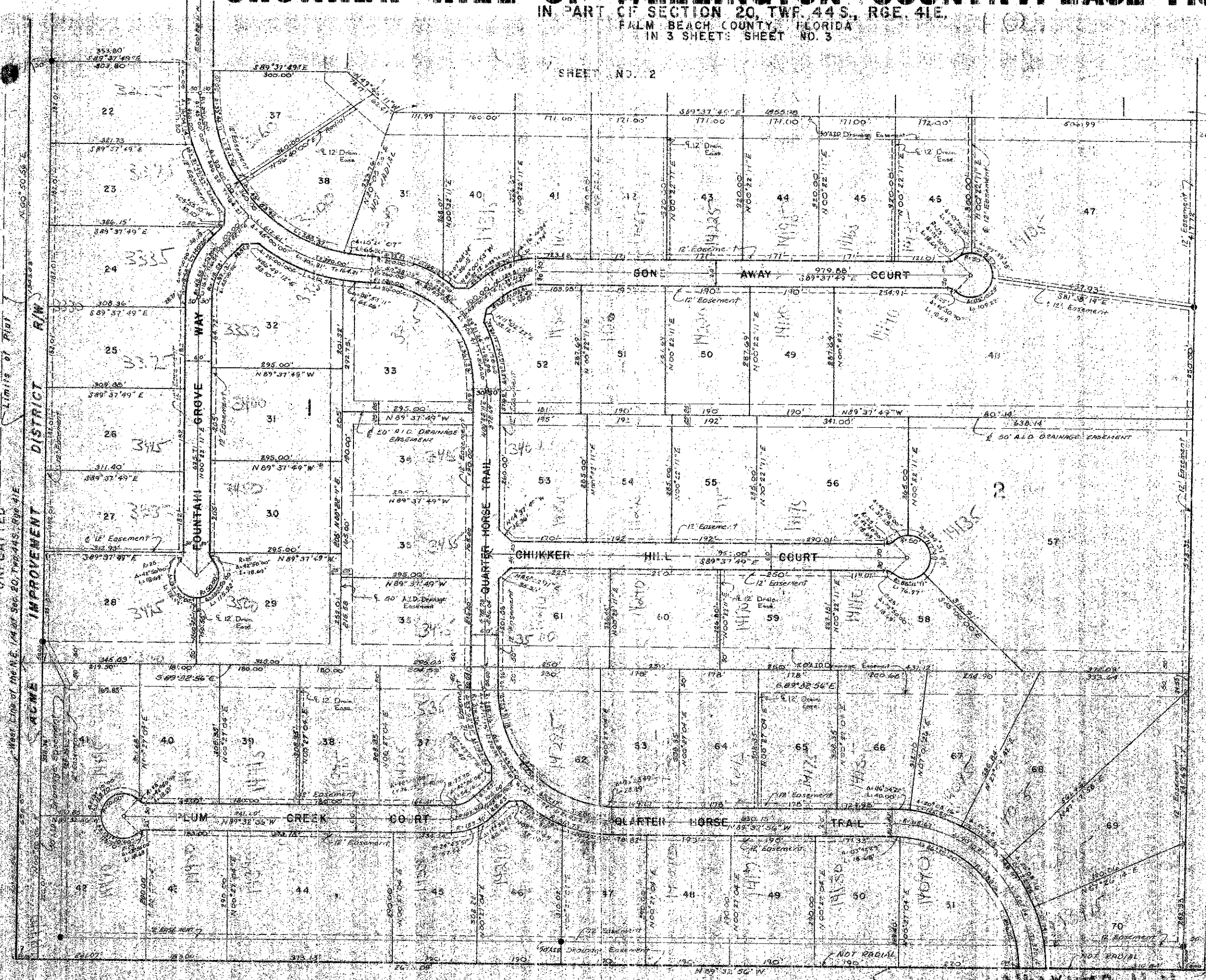
CHUKKER HILL OF WELLINGTON COUNTRY PLACE - P.U.D.

IN PART OF SECTION 20, TWP. 44 S., RGE. 41 E.
PALM BEACH COUNTY, FLORIDA
IN 3 SHEETS SHEET NO. 3

SHEET NO. 2

46

STATE OF FLORIDA
COUNTY OF PALM BEACH
This Plat was filed for record of
this day of _____, 1960,
and duly recorded in Plat Book No.
on page _____
JOHN B. DUNKLE, Clerk Circuit Court
By _____ D.C.



SCALE: 1" = 100'
GEE & JENSON
ENGINEERS-ARCHITECTS-PLANNERS, INC.
WEST PALM BEACH, FLORIDA
JULY, 1959

NOTE
All bearings shown herein are relative to
or assumed meridian used throughout
Wellington.
Building setbacks shall be as required
by Palm Beach County Zoning Regulations.
There shall be no buildings or other
structures placed on utility easements.
There shall be no buildings or any kind
of construction or trees or shrubs placed
on drainage easements.
Easements are for Public Utilities,
unless otherwise noted.
● denotes Permanent Reference Monument
● denotes Permanent Control Point
Where Utility Easements and Drainage
Easements cross, Drainage Easements
shall take precedent.

0333-301
46
CHUKKER Hill of Wellington Country Pl.

40-46

UNPLATTED DISTRICT R/W
IMPROVEMENT DISTRICT R/W
ACME

UNPLATTED DISTRICT R/W
IMPROVEMENT DISTRICT R/W

Limits of Plat