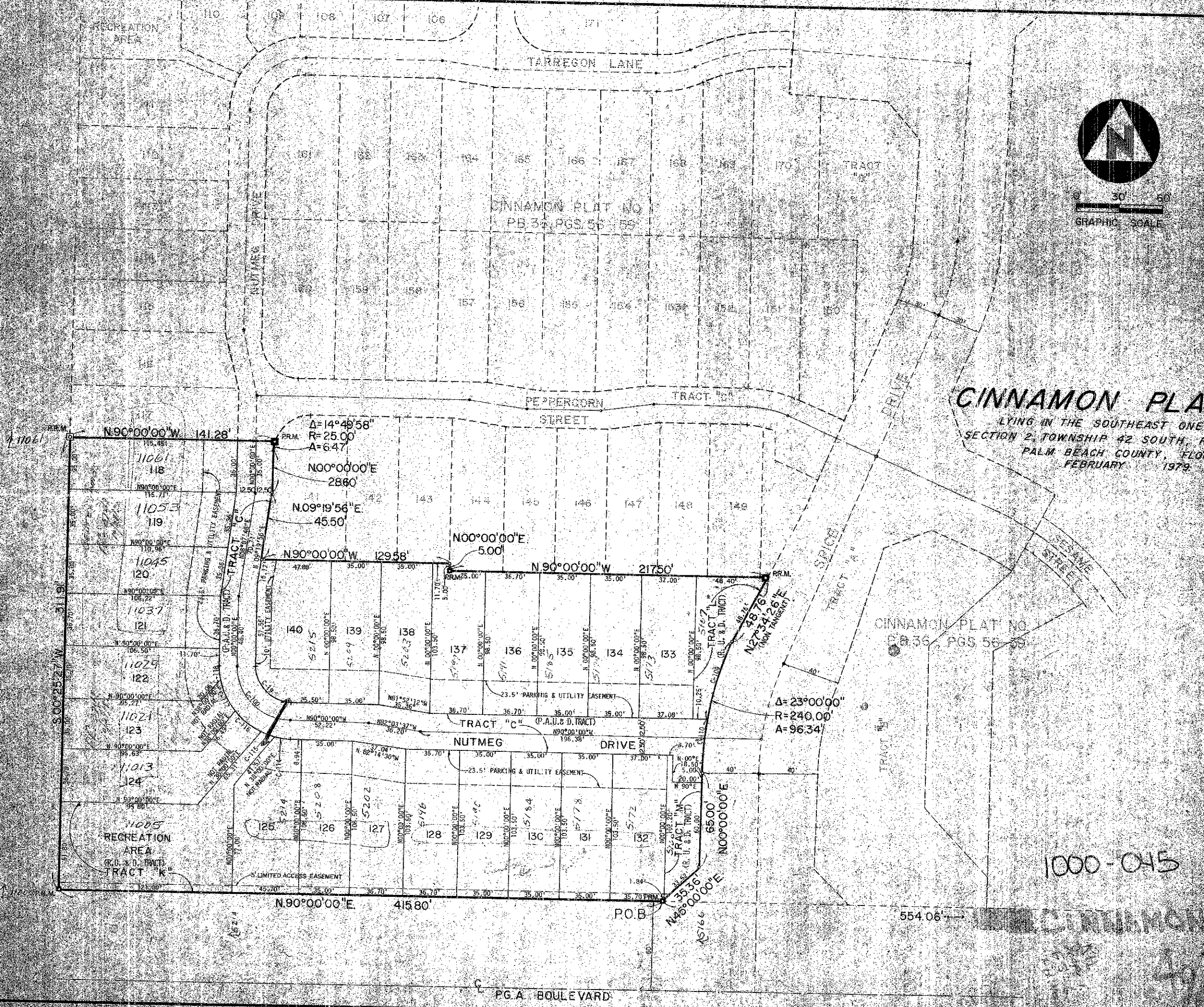
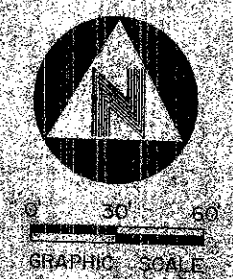


40-67



**CINNAMON PLAT NO. 2**  
 LYING IN THE SOUTHEAST ONE QUARTER  
 SECTION 2, TOWNSHIP 42 SOUTH, RANGE 42 EAST,  
 PALM BEACH COUNTY, FLORIDA.  
 FEBRUARY, 1979.



67  
 STATE OF FLORIDA  
 COUNTY OF PALM BEACH  
 THIS PLAT HAS BEEN  
 RECORDED AT  
 THIS OFFICE OF  
 RECORDS IN YEAR 1979  
 ON PAGE 1 AND  
 2  
 JOHN D. THOMAS, CLERK  
 COUNTY COURT

CINNAMON PLAT NO.  
 PB 36, PGS 58-59

1000-045

**BISCAYNE ENGINEERING CO.**  
 1000 N. W. 10th St., Suite 200, Ft. Lauderdale, Florida 33304  
 PHONE 561-543-3333

DATE	1/27/79
BY	J. D. THOMAS
CHECKED	J. D. THOMAS
APPROVED	J. D. THOMAS
TITLE	CINNAMON PLAT NO. 2
SCALE	AS SHOWN
UNIT	FEET

PG. A BOULEVARD