

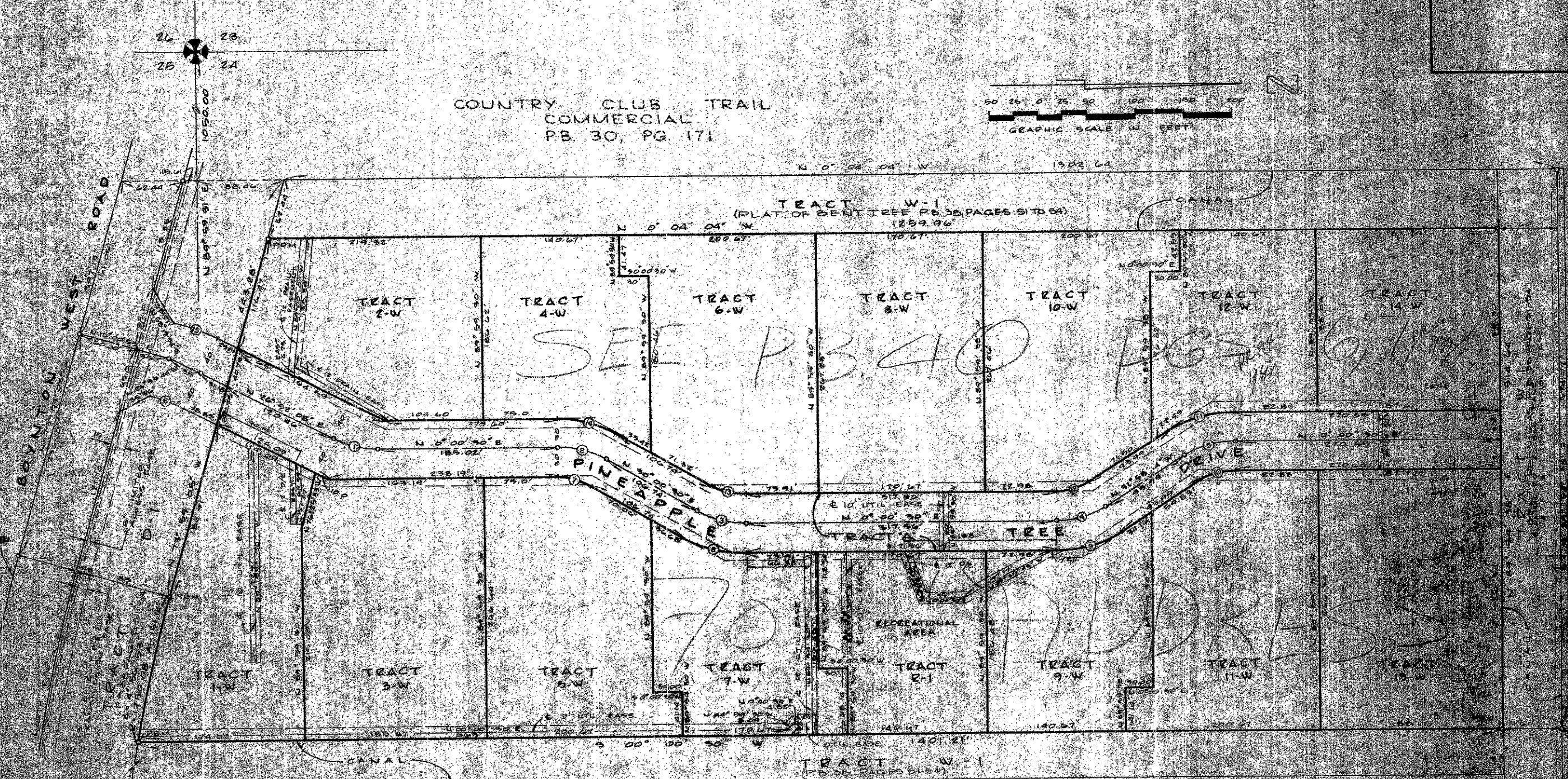
# A PLANNED UNIT DEVELOPMENT IN COUNTRY CLUB TRAIL A REPLAT OF THE PLAT OF BENT TREE GARDENS

SHEET NO. THREE OF THREE SHEETS

73

40-73

COUNTRY CLUB TRAIL  
COMMERCIAL  
PB. 30, PG. 171



ε AND R/W CURVE DATA

NO.	RADIUS	DELTA	A <sub>1</sub>	T	CH
1	100'	20° 31' 48"	14.48'	29.95'	14.48'
2	100'	20° 31' 48"	14.48'	29.95'	14.48'
3	100'	20° 31' 48"	14.48'	29.95'	14.48'
4	100'	20° 31' 48"	14.48'	29.95'	14.48'
5	100'	20° 31' 48"	14.48'	29.95'	14.48'
6	100'	20° 31' 48"	14.48'	29.95'	14.48'
7	100'	20° 31' 48"	14.48'	29.95'	14.48'
8	100'	20° 31' 48"	14.48'	29.95'	14.48'
9	100'	20° 31' 48"	14.48'	29.95'	14.48'
10	100'	20° 31' 48"	14.48'	29.95'	14.48'
11	100'	20° 31' 48"	14.48'	29.95'	14.48'
12	100'	20° 31' 48"	14.48'	29.95'	14.48'
13	100'	20° 31' 48"	14.48'	29.95'	14.48'
14	100'	20° 31' 48"	14.48'	29.95'	14.48'
15	100'	20° 31' 48"	14.48'	29.95'	14.48'
16	100'	20° 31' 48"	14.48'	29.95'	14.48'
17	100'	20° 31' 48"	14.48'	29.95'	14.48'
18	100'	20° 31' 48"	14.48'	29.95'	14.48'
19	100'	20° 31' 48"	14.48'	29.95'	14.48'
20	100'	20° 31' 48"	14.48'	29.95'	14.48'

NO.	RADIUS	DELTA	A <sub>1</sub>	T	CH
9	50'	41° 58' 44"	12.97'	24.94'	12.97'
10	70'	31° 58' 44"	16.97'	33.94'	16.97'
11	100'	21° 58' 44"	20.97'	42.94'	20.97'
12	150'	11° 58' 44"	24.97'	49.94'	24.97'
13	200'	7° 58' 44"	28.97'	57.94'	28.97'
14	300'	5° 18' 44"	32.97'	65.94'	32.97'
15	400'	3° 58' 44"	36.97'	73.94'	36.97'
16	500'	3° 08' 44"	40.97'	81.94'	40.97'
17	600'	2° 48' 44"	44.97'	89.94'	44.97'
18	700'	2° 31' 48"	48.97'	97.94'	48.97'
19	800'	2° 18' 48"	52.97'	105.94'	52.97'
20	900'	2° 08' 48"	56.97'	113.94'	56.97'

PLAT OF BENT TREE  
P.B. 35 P.P. 51, 52, 53 & 54

0226-002 40/73

Field Book No. \_\_\_\_\_  
Design: \_\_\_\_\_  
Drawn: M. B. ALONZO  
Checked: L. A. MATTHEW  
Approved: \_\_\_\_\_

ROBERT E. OWEN & ASSOCIATES, INC.  
ENGINEERS - PLANNERS - SURVEYORS  
WEST PALM BEACH, FLORIDA  
REPLAT OF THE PLAT OF BENT TREE GARDENS  
NOV. 1973  
BF 22908