

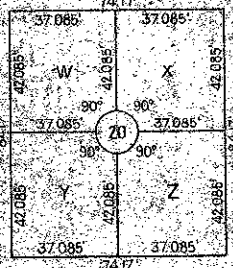
# LAKE COLONY PHASE 1

A PORTION OF THE NORTHEAST 1/4 OF THE SOUTHEAST 1/4 OF SECTION 1,  
TOWNSHIP 44 SOUTH, RANGE 42 EAST, PALM BEACH COUNTY, FLORIDA.

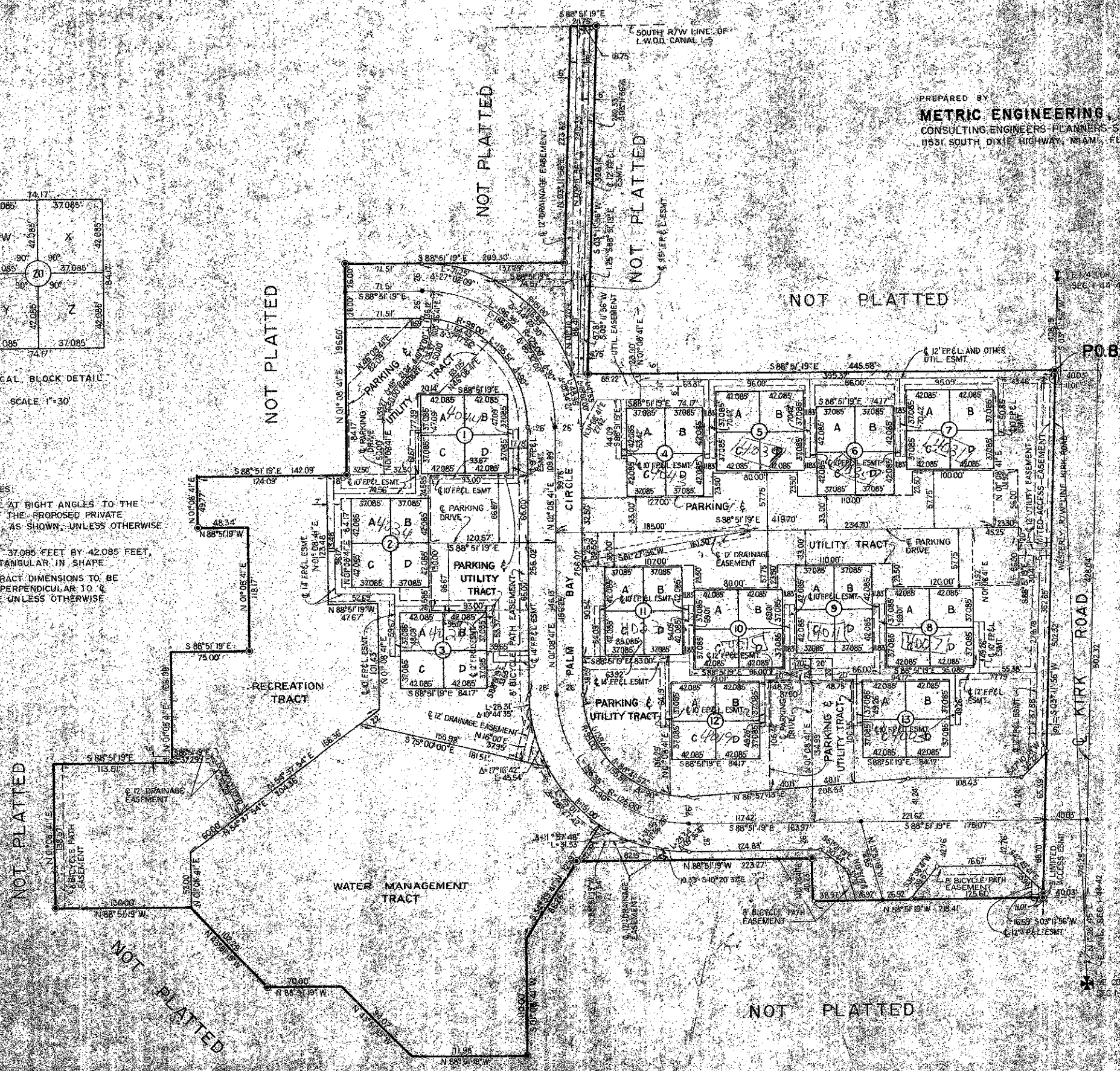
MAY 1979

STATE OF FLORIDA  
COUNTY OF PALM BEACH  
This plat was filed for record on  
this 27th day of May A.D. 1980  
and duly recorded in Plat Book No.  
of Page 22, Third  
JOHN S. DUNN, Surveyor  
Circuit Clerk  
BY \_\_\_\_\_

PREPARED BY  
**METRIC ENGINEERING, INC.**  
CONSULTING ENGINEERS-PLANNERS-SURVEYORS  
1551 SOUTH DIXIE HIGHWAY, MIAMI, FLORIDA



- SURVEYOR'S NOTES:**
1. ALL LOTS ARE AT RIGHT ANGLES TO THE CENTERLINE OF THE PROPOSED PRIVATE PARKING DRIVE, AS SHOWN, UNLESS OTHERWISE INDICATED.
  2. ALL LOTS ARE 37.085 FEET BY 42.085 FEET, AND ARE RECTANGULAR IN SHAPE.
  3. ALL PARKING TRACT DIMENSIONS TO BE PARALLEL OR PERPENDICULAR TO A PARKING DRIVE UNLESS OTHERWISE SHOWN.



PALM BEACH PLANTATION PLAT NO. 1  
PB 10 P 20



LAKE COLONY Ph. I  
0264-300 40

40-77