

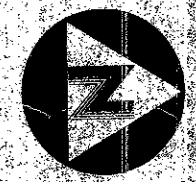
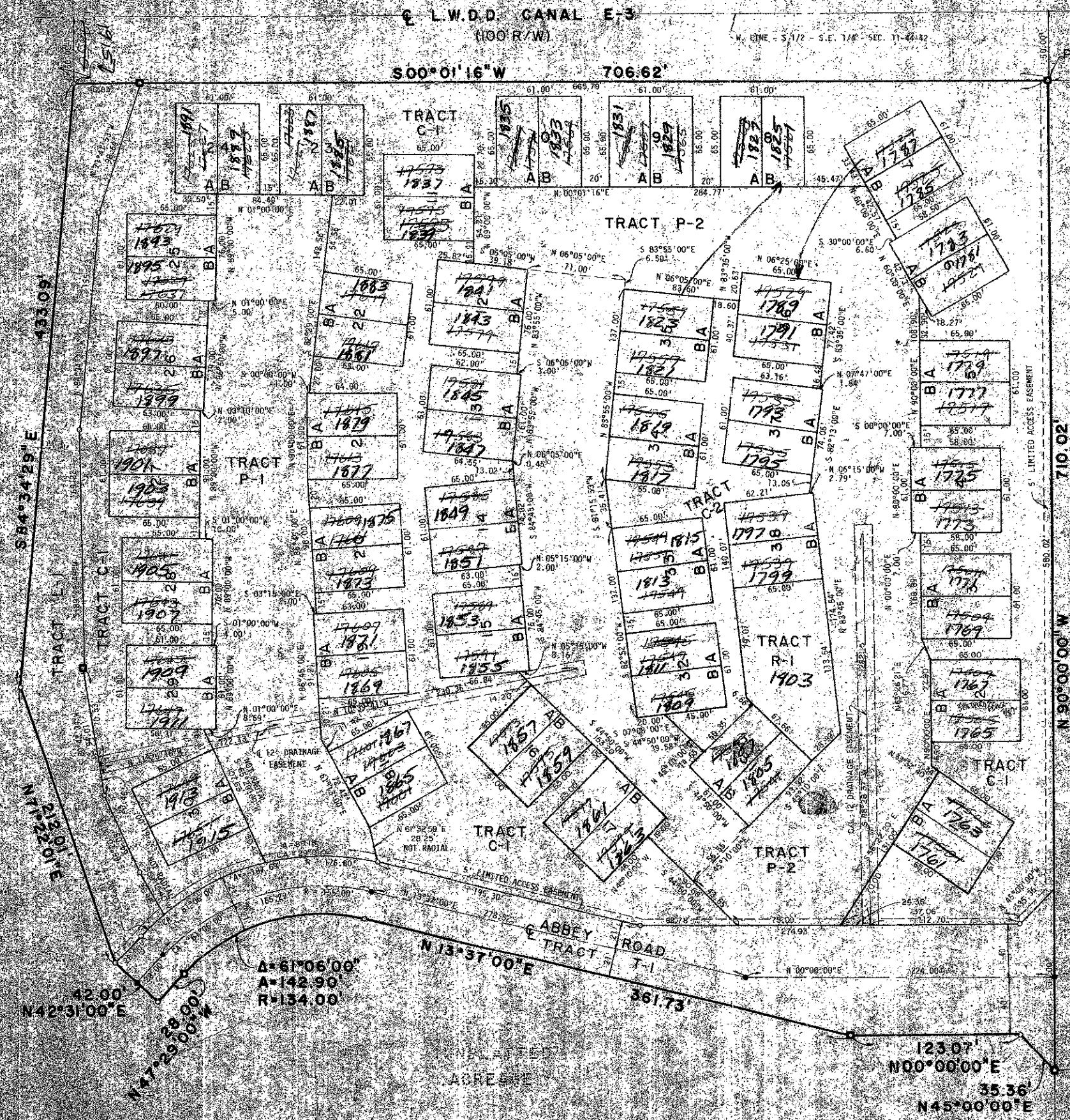
40-93

93

# ABBNEY PARK PLAT NO. 1

LYING IN SECTION 11, TOWNSHIP 44 SOUTH,  
RANGE 42 EAST, PALM BEACH COUNTY, FLORIDA

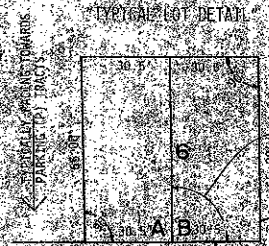
L.W.D.D. CANAL E-3  
(100 R/W)



0 40 80  
GRAPHIC SCALE

### NOTES:

1. TRACTS P-1 AND P-2 ARE COMMON AREA TRACTS FOR THE PURPOSES OF PARKING, ACCESS, UTILITIES, DRAINAGE AND LANDSCAPING (SEE DEDICATION)
2. TRACTS C-1 AND C-2 ARE COMMON AREA TRACTS FOR THE PURPOSES OF LANDSCAPING AND UTILITIES (SEE DEDICATION)
3. TRACT R-1 IS A COMMON AREA TRACT FOR THE PURPOSES OF DRAINAGE (SEE DEDICATION)
4. TRACT T-1 IS A COMMON AREA TRACT FOR THE PURPOSES OF DRAINAGE (SEE DEDICATION)



NOTE: FOR PURPOSES OF THIS MAP, LOT DEDICATION FOR THE IMPROVED HIGHWAY SHOWN ABOVE SHALL BE AS FOLLOWS:

- 1. LEFT LOT TO ROAD - 10 FT.
- 2. RIGHT LOT TO ROAD - 10 FT.

NOTE: HOWEVER, THAT THE LEFT LOT DOES NOT REPRESENT A REALTY AS THE "A" SIDE OF THE LOT. THIS LOT IS TYPICAL TO PROVIDE PRIMARILY FOR DRAINAGE INFORMATION AND FOR THE METHOD OF DESCRIBING A GIVEN LOT AS BEING LEFT OR RIGHT TO THE HIGHWAY SHOWN ABOVE.

0190-001  
40/93  
ABBNEY PARK #1



BENCH MARK  
SURVEYING AND MAPPING, INC.  
1000 N. W. 10th St., Suite 100, Ft. Lauderdale, FL 33304  
TEL: (954) 561-1111 FAX: (954) 561-1112

THIS INSTRUMENT WAS PREPARED BY ROBERT J. WYBICKI IN THE OFFICES OF BENCH MARK SURVEYING AND MAPPING, INC., 1000 N. W. 10th St., Suite 100, Ft. Lauderdale, Florida 33304. (954) 561-1111