

40-99

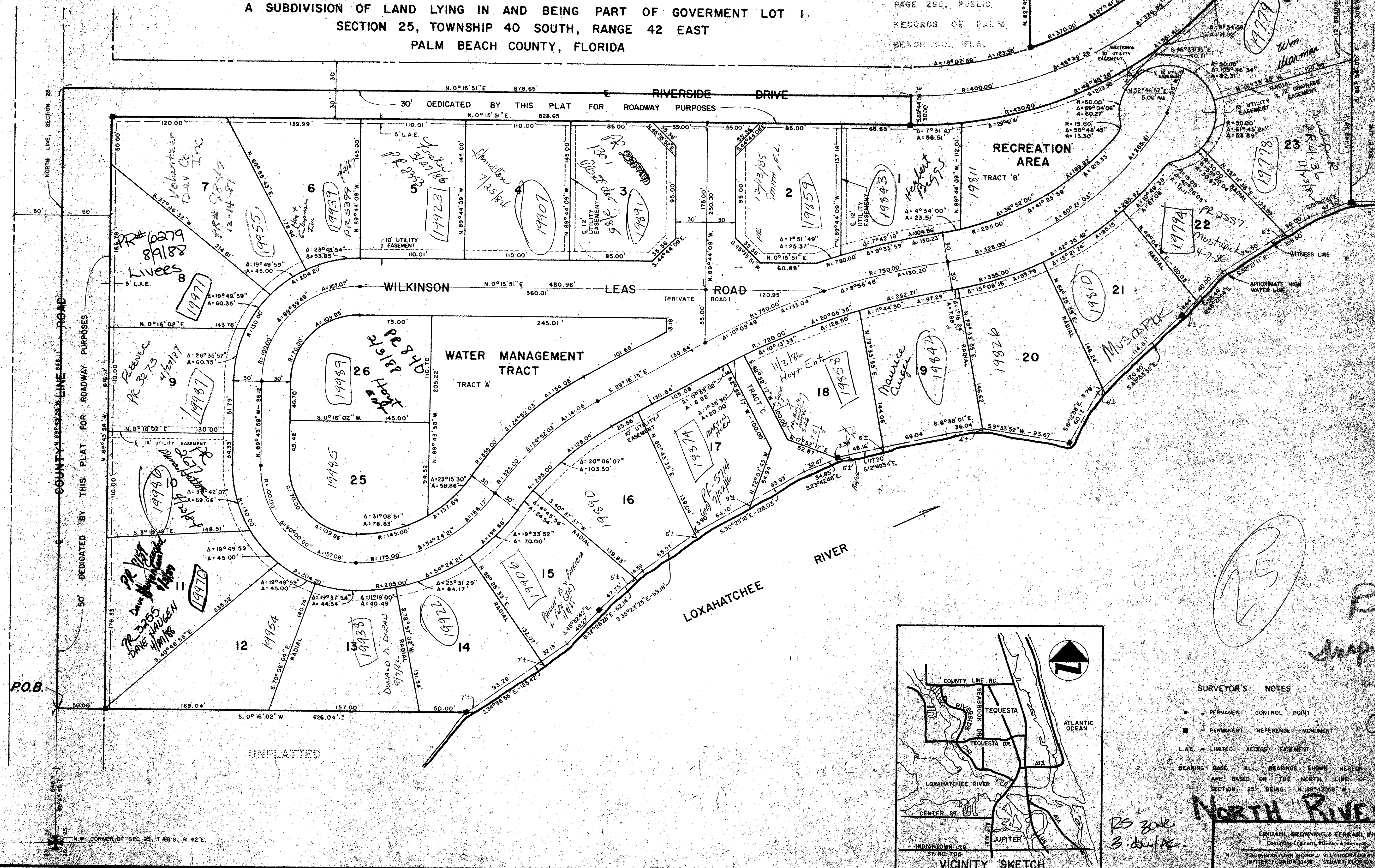
# NORTH RIVER PLANTATION

JULY, 1980

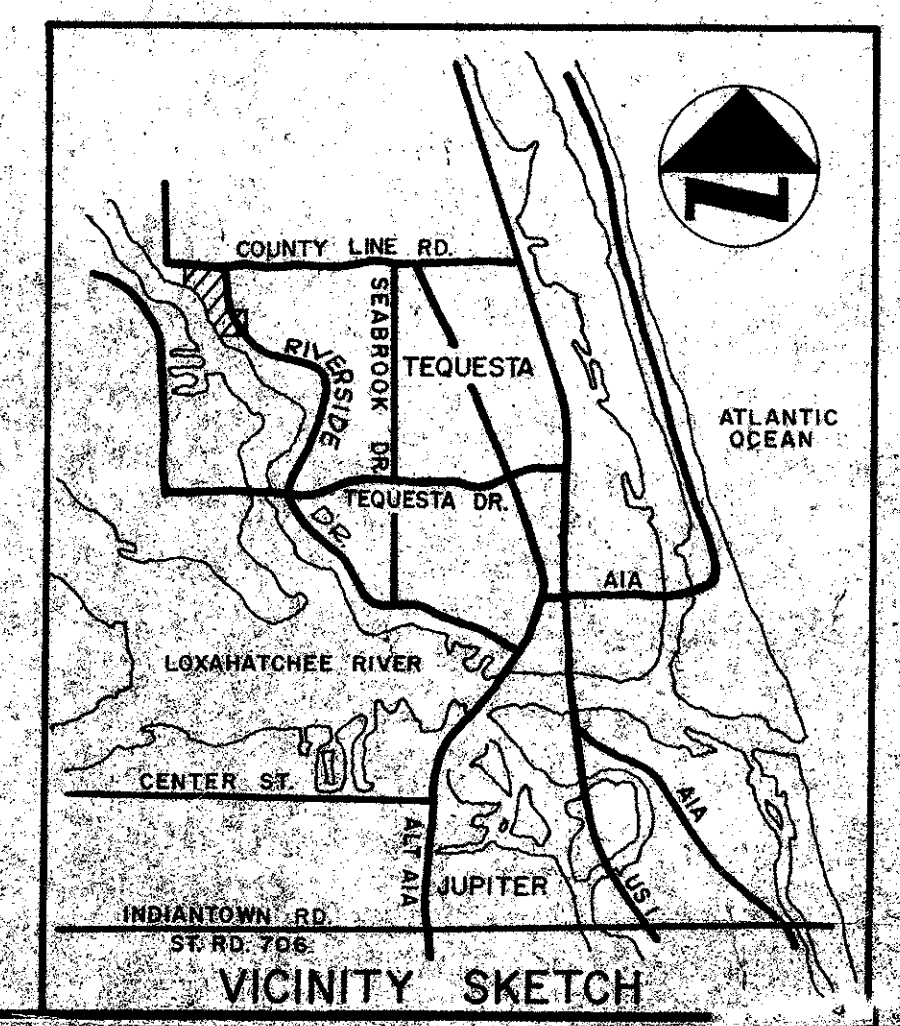
A SUBDIVISION OF LAND LYING IN AND BEING PART OF GOVERNMENT LOT 1, SECTION 25, TOWNSHIP 40 SOUTH, RANGE 42 EAST, PALM BEACH COUNTY, FLORIDA

WENDIMERE PLAT BOOK 40 LOT 56.00'	HEIGHTS PAGE 243	UNBLATTED	P.O.B. 136.90'
LOT 56.00'	91.42'	51.71'	41.63'

99



PARCEL DESCRIBED  
IN DEED BOOK 262,  
PAGE 290, PUBLIC  
RECORDS OF PALM  
BEACH CO., FLA.



- SURVEYOR'S NOTES**
- PERMANENT CONTROL POINT
  - PERMANENT REFERENCE MONUMENT
  - L.A.E. = LIMITED ACCESS EASEMENT
- BEARING BASE - ALL BEARINGS SHOWN HEREON ARE BASED ON THE NORTH LINE OF SECTION 25 BEING N. 89° 45' 00" W.

0280-000

40/99

## NORTH RIVER PLANTATION

LINDALI, BROWNING & FERRARI, INC. Consulting Engineers, Planners & Surveyors 426 INDIANTOWN ROAD - SUITE 100 - JUPITER, FLORIDA 33458	
2	2

23

RS  
Imp 2

RS zone  
3 duple

199 duple