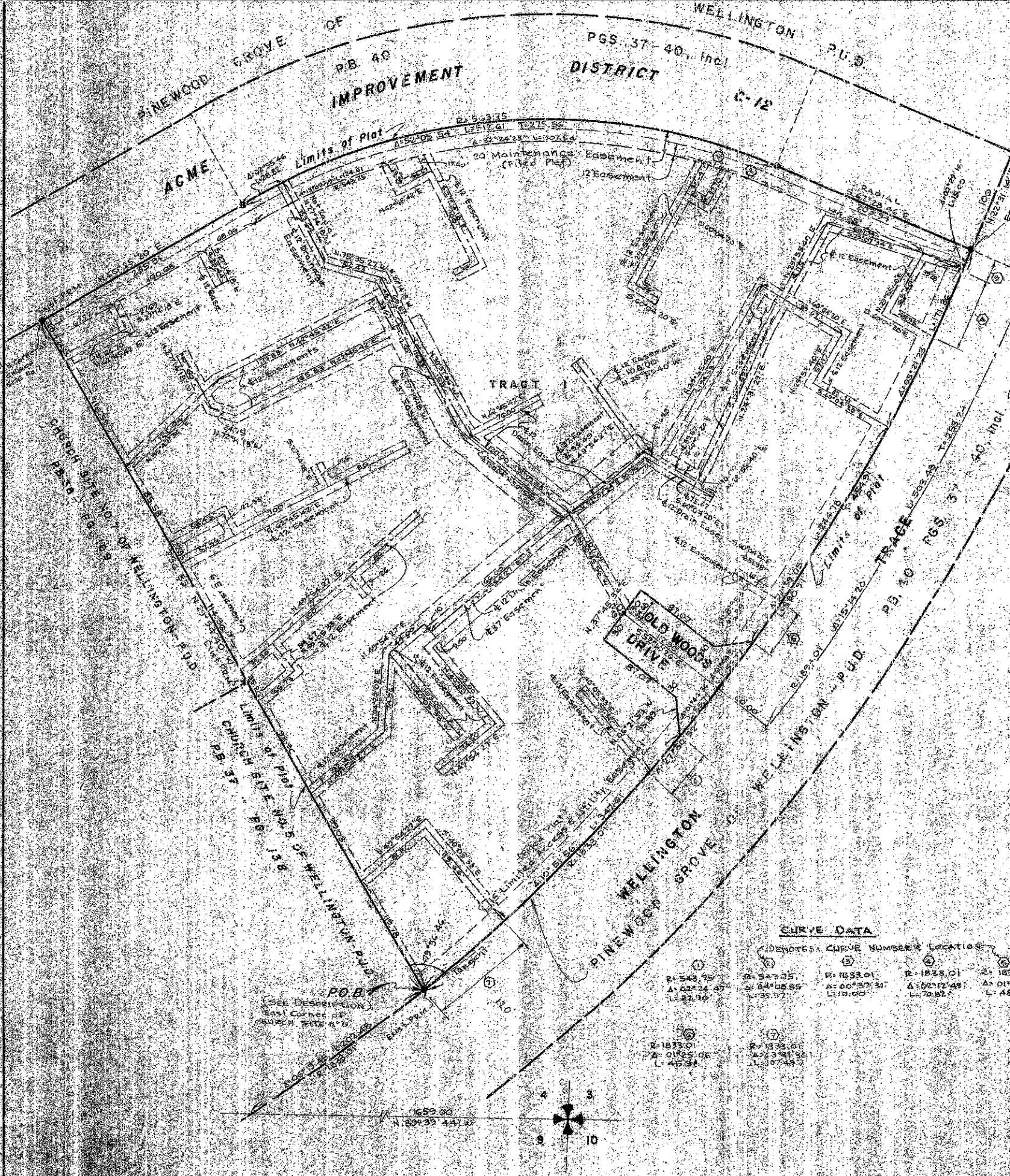


121-01

121

STATE OF FLORIDA
 COUNTY OF PALM BEACH
 This Plat was filed for record on _____
 this _____ day of _____, 1980
 and duly recorded in Plat Book No. _____
 on page _____
 JOHN B. DUNKLE, Clerk Circuit Court,
 by _____, C.C.



SHEFFIELD WOODS - UNIT NO. 1 OF WELLINGTON - P.U.D.

Being a Replat of All of Parcel 15, PINEWOOD GROVE OF WELLINGTON P.U.D. as recorded in P.B. 40, Pgs. 37
 thru 40, inclusive, Public Records of Palm Beach County, Florida.
 IN PART OF SECTION 4, TWP 44S, RGE 41E
 PALM BEACH COUNTY, FLORIDA
 IN 2 SHEETS SHEET NO. 2
 GEE & JENSON
 ENGINEERS-ARCHITECTS-PLANNERS, INC.
 WEST PALM BEACH, FLORIDA
 MAY 1980

NOTES

- All bearings shown herein are relative to an assumed meridian used throughout Wellington.
- Building Setback Lines shall be as required by Palm Beach County Zoning Regulations.
- There shall be no buildings or other structures placed on Utility Easements.
- There shall be no buildings or any kind of construction or trees or shrubs placed on Drainage Easements.
- Easements are for Public Utilities, unless otherwise noted.
- * denote Permanent Reference Monuments
- o denote Permanent Control Point
- where Utility Easements and Drainage Easements cross, Drainage Easements shall take precedence.

CURVE DATA

① DENOTES CURVE NUMBER & LOCATION

① R=543.75 Δ=62°24'47" L=22.76	② R=543.75 Δ=64°02'55" L=35.57	③ R=1133.01 Δ=60°37'31" L=110.00	④ R=1133.01 Δ=62°12'49" L=78.82	⑤ R=1133.01 Δ=61°21'15" L=48.43
⑥ R=1133.01 Δ=61°25'06" L=45.84	⑦ R=1395.67 Δ=73°51'32" L=107.49			

0332-334

SHEFFIELD Woods
 of WELL. UNIT 1
 401
 1/121

