

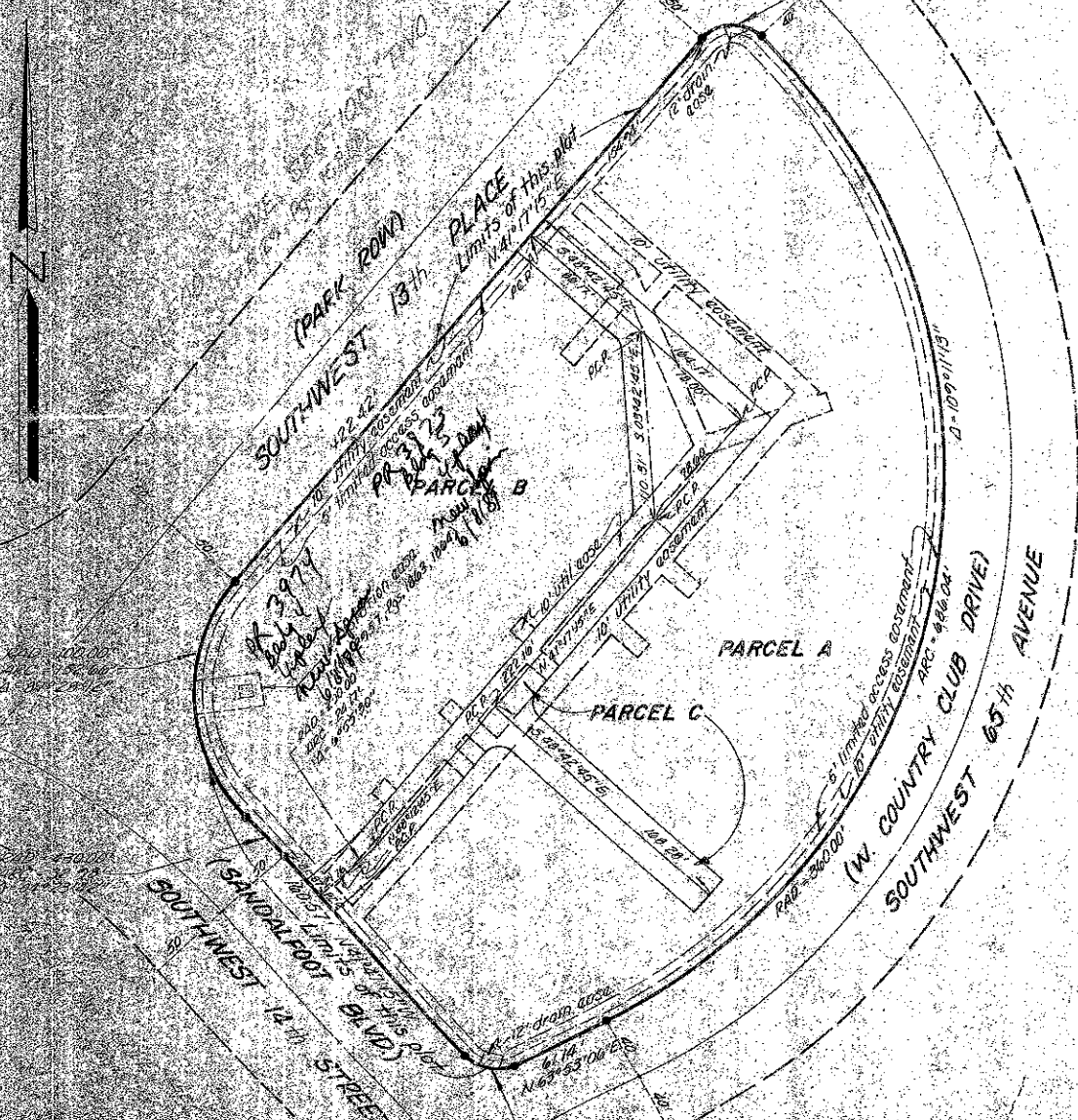
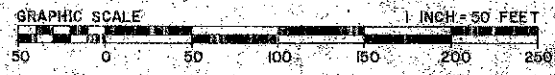
40-124

COUNTRY CLUB COVE PUD

A REPLAT OF PARCEL A IN SANDALFOOT COVE, SECTION TWO,
SECTION 30, TOWNSHIP 47 SOUTH, RANGE 42 EAST, AS RECORDED IN PLAT BOOK 29,
PAGES 15 and 16 OF THE PUBLIC RECORDS OF
PALM BEACH COUNTY, FLORIDA.

STATE OF FLORIDA
COUNTY OF PALM BEACH
THIS REPLAT WAS FILED FOR
RECORD WITH THE CLERK OF
SANDALFOOT COVE AND WAS
RECORDED IN PLAT BOOK NO 40
ON PAGES 1-12
JOHN A. DUNKLE
CLERK OF SANDALFOOT COVE
BY [Signature]

LOCATION MAP



DESCRIPTION

Parcel A, Sandalfoot Cove Section Two, according to the plat thereof, as recorded in Plat Book 29, Pages 15 and 16 of the Public Records of Palm Beach County, Florida.

Said lands situate, lying and being in Palm Beach County, Florida, containing 3.89 acres, more or less.

TABULAR INFORMATION

Total Acreage	3.89 ac ±	Private Road (Parcel C)	0.73 ac ±
No. of dwelling units	24 units	and Parking Building Coverage	0.40 ac ±
Open Space	2.40 ac ±	Density of Project	0.71 du/ac ±

DEDICATION

STATE OF FLORIDA
COUNTY OF PALM BEACH
KNOW ALL MEN BY THESE PRESENTS, that Country Club Cove, incorporated, a Florida Corporation, owner of land shown hereon, being Section 30, Township 47 South, Range 42 East, Palm Beach County, Florida, shown hereon as Country Club Cove, being more particularly described above, under description, have consented to be surveyed and plotted as shown hereon and do hereby dedicate as follows: 1) that Parcel C is for private road purposes and is hereby dedicated to the COUNTRY CLUB COVE HOMEOWNERS ASSOCIATION and is the perpetual maintenance obligation of said association. 2) utility and drainage easements - the utility easements and drainage easements as shown are hereby dedicated in perpetuity for the construction and maintenance of utilities and drainage.

IN WITNESS WHEREOF, the above-named Corporation has caused these presents to be signed by its president, CARLISLE NEITHOLD, and attested by its secretary-treasurer, ROBERT M. RICKER, and its corporate seal to be affixed hereto by and with the authority of its Board of Directors, this day of 1980.

COUNTRY CLUB COVE, INC., a corporation of the State of Florida
By CARLISLE NEITHOLD, PRESIDENT.
Attest: ROBERT M. RICKER, SEC. - TREAS.

GENERAL NOTES

- All bearings shown hereon are based on Sandalfoot Cove - Section Two Plat Book 29, Pages 15 and 16.
- denotes Permanent Reference Monuments (PRM).
- There shall be no buildings or other structures placed on utility easements.
- There shall be no buildings or any kind of construction or trees or shrubs placed on drainage easements.
- Where utility easements and drainage easements cross, drainage easements shall take precedent.

PREPARED BY
MICHAEL G. PURMORT & ASSOC., INC.
LAND SURVEYORS - LAND PLANNERS
201 NORTH FEDERAL HIGHWAY, SUITE 110
DEERFIELD BEACH, FLORIDA

PALM BEACH COUNTY APPROVALS

BOARD OF COUNTY COMMISSIONERS

This plat is hereby approved for record this 26th day of August, 1980, by the Board of County Commissioners.
[Signature] BEANIS P. KOEHLER, CHAIRMAN

COUNTY ENGINEER

This plat is hereby approved for record this 26th day of August, 1980, by the County Engineer.
[Signature] JOHN B. DUNKLE, CLERK

ACKNOWLEDGEMENT

STATE OF FLORIDA
COUNTY OF PALM BEACH
BEFORE ME personally appeared [Signature] and known to me to be the person whose name is subscribed to the foregoing instrument as president and secretary-treasurer of COUNTRY CLUB COVE, INC., a corporation, and severally acknowledged to me that they executed such instrument as such officers of said corporation, and that the seal affixed to the foregoing instrument is the corporate seal of said corporation and that it was affixed to said instrument by me and regular corporate authority, and that said instrument is the free act and deed of said corporation.
WITNESS my hand and official seal this day of 1980.
My commission expires [Signature]

TITLE CERTIFICATION

STATE OF FLORIDA
COUNTY OF PALM BEACH
I, ALAN ECKEN, a duly licensed attorney in the State of Florida, do hereby certify that I have examined the title to the parcel described above, that I find the title to the property is vested to Country Club Cove, Inc., a corporation under the laws of the State of Florida, that the correct title has been determined.
DATED 1-23-80.

SURVEYORS CERTIFICATION

STATE OF FLORIDA
COUNTY OF PALM BEACH
KNOW ALL MEN BY THESE PRESENTS, that the undersigned do hereby certify that [Signature] and [Signature] completed the survey shown on the foregoing plat, that said survey is correct, consistent with the laws, though described with reference to Permanent Reference Monuments, that the same comply with the provisions of the laws of the State of Florida, that the same conform with the requirements of Chapter 173, Florida Statutes, as amended, and Ordinances of Palm Beach County, Florida.

MICHAEL G. PURMORT & ASSOC., INC.
[Signature]
MICHAEL G. PURMORT
Registered Land Surveyor
No. 115160
State of Florida

0306-300