

40-174

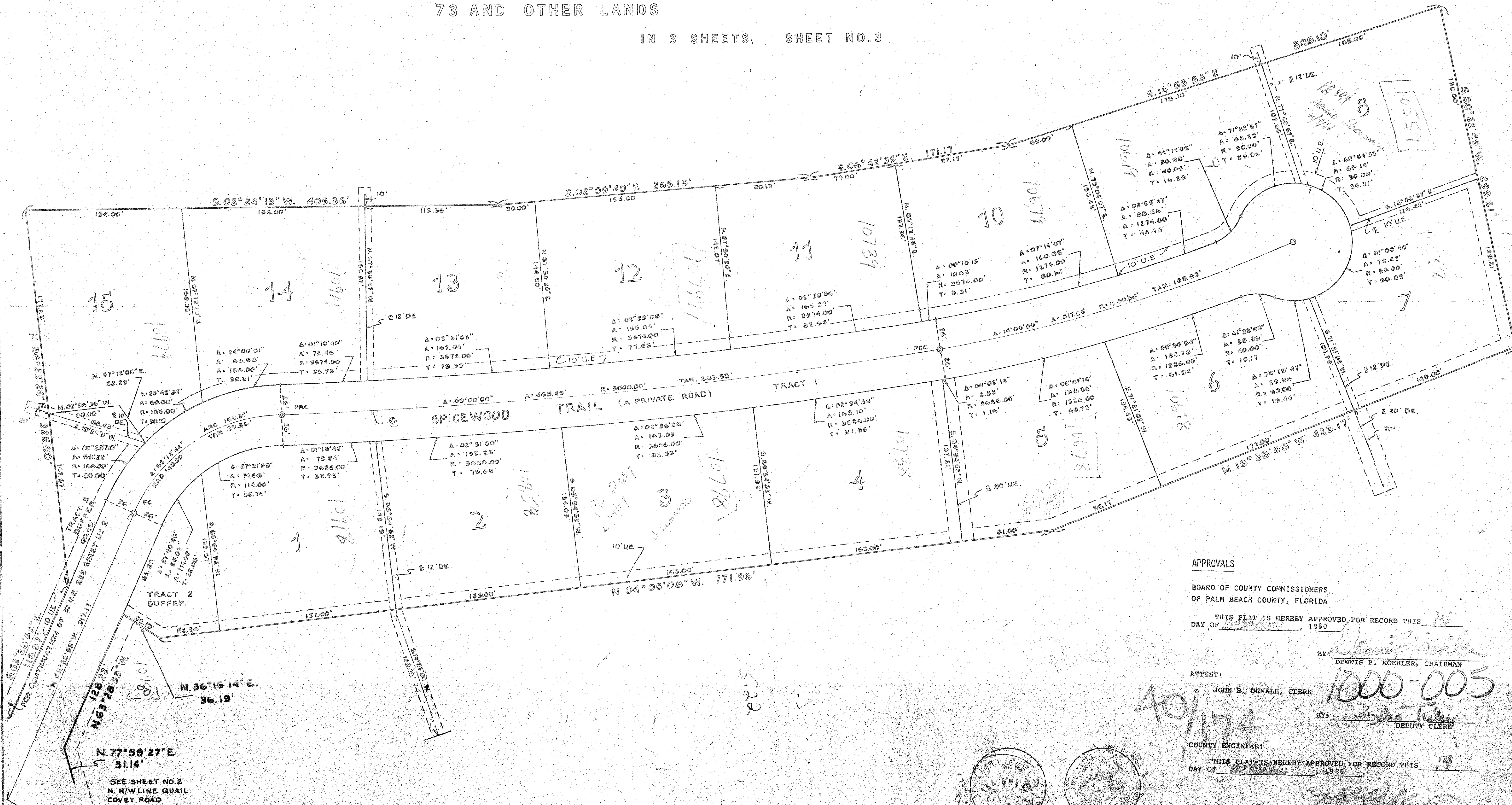
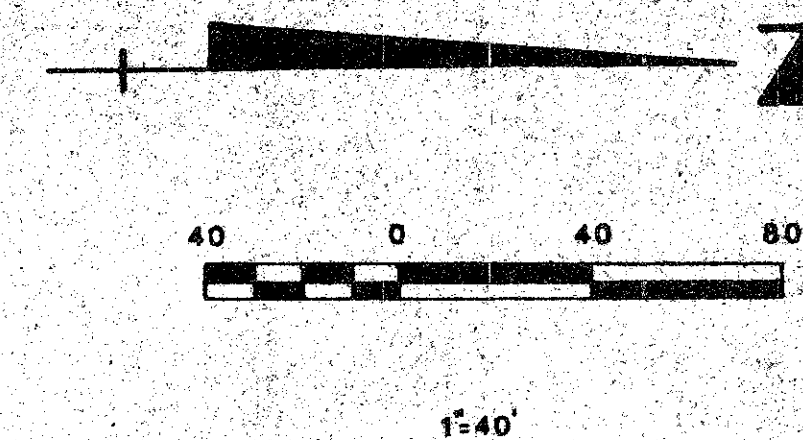
PLAT NO. 21 QUAIL RIDGE

(A PLANNED UNIT DEVELOPMENT)

IN SECTION 30 TOWNSHIP 45 SOUTH, RANGE 43 EAST
PALM BEACH COUNTY, FLORIDA, BEING A REPLAT OF
TRACTS 115, 116, 110, 109, 83 AND PORTIONS OF TRACTS 117,
108, 84, 85, 78, 77, 51 & 52 PALM BEACH FARMS COMPANY
PLAT NO. 8 SEC. 30 T-45-S, R-43-E PLAT BOOK 5 PAGE
73 AND OTHER LANDS

IN 3 SHEETS, SHEET NO. 3

174



APPROVALS

BOARD OF COUNTY COMMISSIONERS
OF PALM BEACH COUNTY, FLORIDA

THIS PLAT IS HEREBY APPROVED FOR RECORD THIS
DAY OF March, 1980

BY: Dennis P. Koehler
DENNIS P. KOEHLER, CHAIRMAN

ATTEST:
JOHN B. DUNKLE, CLERK

BY: [Signature]
DEPUTY CLERK

COUNTY ENGINEER:

THIS PLAT IS HEREBY APPROVED FOR RECORD THIS
DAY OF March, 1980

H. F. KAHLERT, COUNTY ENGINEER

