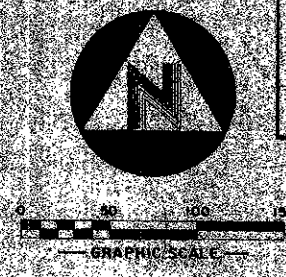
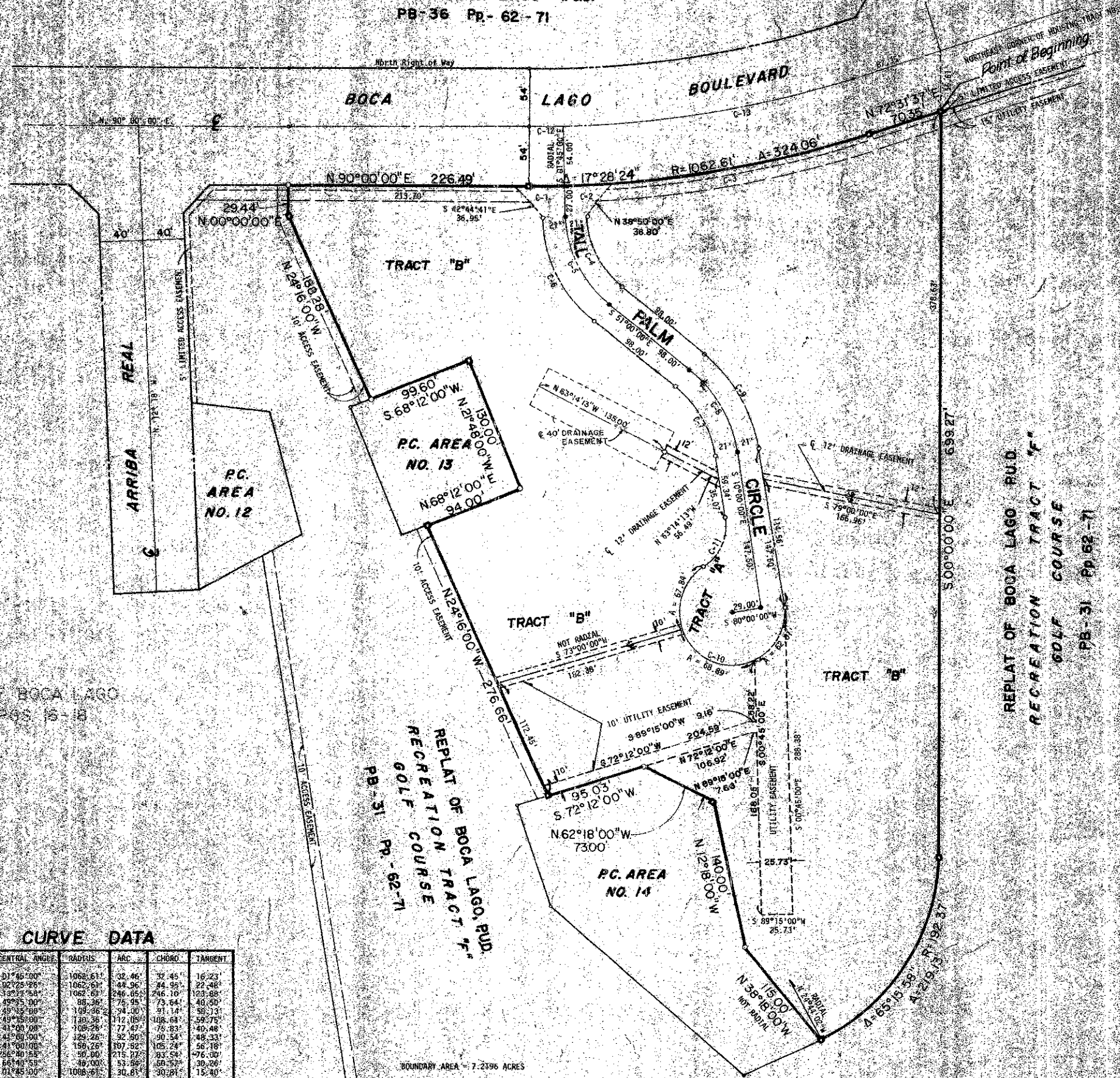


40-178

REPLAT OF BOCA LAGO P.U.D.  
PB-36 Pp. 62-71

178



STATE OF FLORIDA  
COUNTY OF PALM BEACH  
THIS PLAT WAS FILED FOR  
RECORD AT  
THIS DAY OF  
NOVEMBER 1980 AND ONLY RE-  
CORDED IN PLAT BOOK  
ON PAGES 178-180  
JOHN S. DUNKLE, CLERK  
CIRCUIT COURT  
BY \_\_\_\_\_

REPLAT OF BOCA LAGO P.U.D.  
RECREATION TRACT "F"  
GOLF COURSE  
PB-31 Pp. 62-71

A PART OF A P.U.D.  
**THE PALMS OF BOCA LAGO**  
BEING A REPLAT OF HOUSING TRACT NO. 4, REPLAT OF BOCA LAGO,  
PLAT BOOK 31, PAGES 62 THROUGH 71, INCLUSIVE, PUBLIC RECORDS,  
PALM BEACH COUNTY, FLA., LYING IN SECTION 20, TOWNSHIP 47 SOUTH,  
RANGE 42 EAST, PALM BEACH COUNTY, FLORIDA  
JANUARY, 1980

2000-000

**BENCH MARK**  
land surveying and mapping, inc.

CONRAD K. STAEY CONSULTING ENGINEERS, INC.  
PALM BEACH COUNTY, FLORIDA

THE PALMS OF BOCA LAGO

NO.	DATE	BY	REVISION
1	11-15-80	JLD	1

**CURVE DATA**

CURVE NO.	CENTRAL ANGLE	RADIUS	ARC	CHORD	TANGENT
C-1	51°45'00"	1098.61'	32.46'	32.45'	16.23'
C-2	12°12'28"	1062.61'	44.36'	44.36'	22.18'
C-3	12°12'28"	1062.61'	246.66'	246.10'	123.58'
C-4	49°15'00"	86.26'	75.95'	73.64'	40.50'
C-5	49°15'00"	109.96'	94.00'	91.14'	38.13'
C-6	41°35'00"	130.58'	112.05'	108.68'	59.75'
C-7	41°35'00"	108.24'	77.47'	75.93'	40.48'
C-8	41°35'00"	129.26'	92.50'	90.54'	46.33'
C-9	41°35'00"	159.26'	107.82'	105.24'	56.18'
C-10	256°40'15"	50.06'	215.37'	183.54'	76.00'
C-11	64°41'53"	49.00'	53.88'	50.57'	30.26'
C-12	01°45'00"	1006.61'	30.81'	30.81'	15.40'
C-13	18°43'24"	1006.61'	876.78'	276.46'	139.27'

BOUNDARY AREA = 7.2196 ACRES  
R/W "A" = 0.5076 AC.  
HOUSING "B" = 6.612 AC.

THIS INSTRUMENT WAS PREPARED BY ROBERT A. WIEDER IN THE OFFICES OF BENCH MARK LAND SURVEYING AND MAPPING, INC., 2633 FERNWOOD COURT, SUITE "A", WEST PALM BEACH, FLORIDA 33409. PHONE 689-2111.