

# GOLDEN LAKES VILLAGE SECTION NINE REPLAT

A PLANNED UNIT DEVELOPMENT

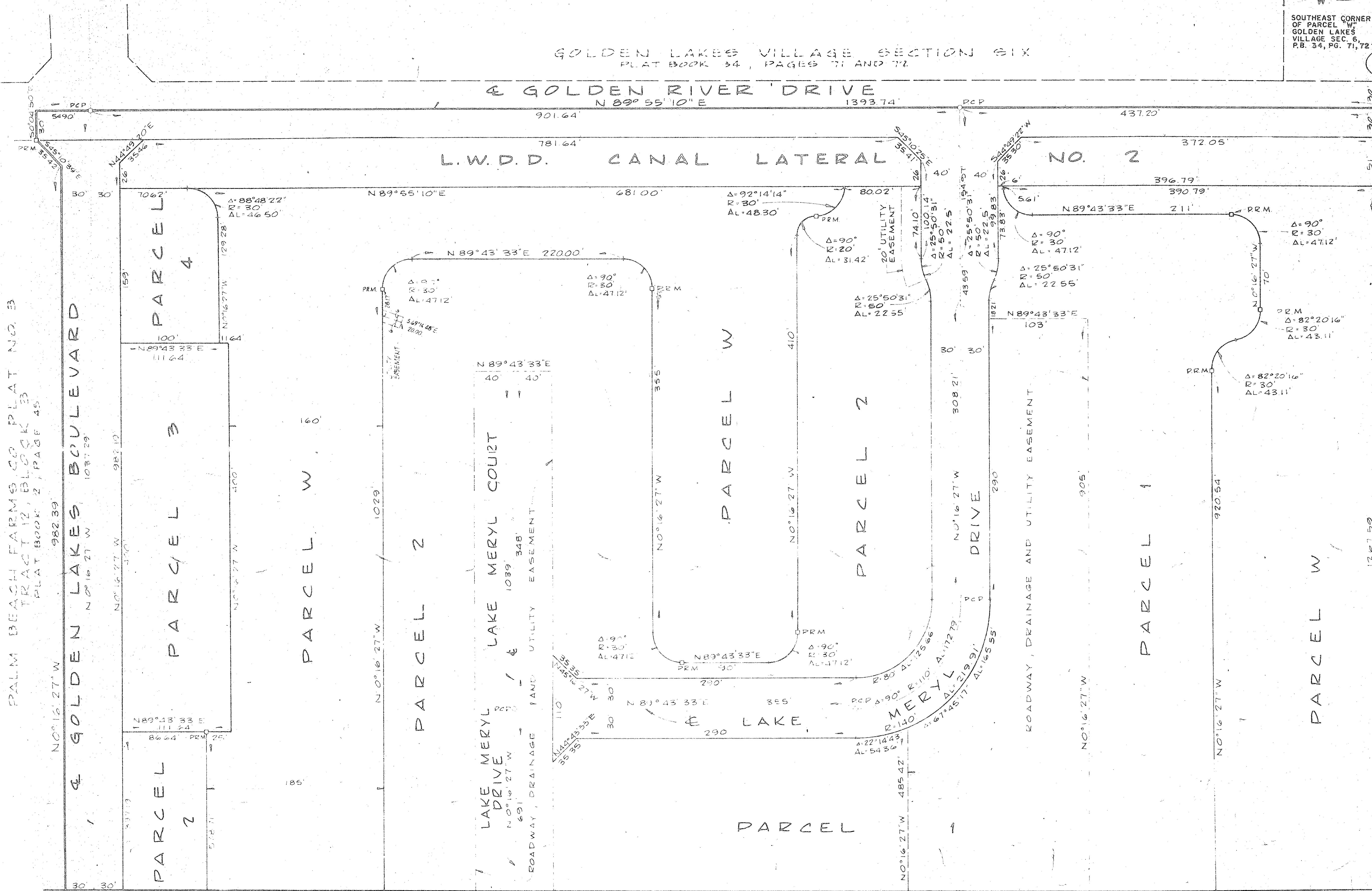
GOLDEN LAKES VILLAGE SECTION SIX  
PLAT BOOK 54, PAGES 71 AND 72

PARCEL  
"W"  
SOUTHEAST CORNER  
OF PARCEL "W"  
GOLDEN LAKES  
VILLAGE SEC. 6,  
P.B. 54, PG. 71, 72

SOUTH  
30'

GOLDEN RIVER DRIVE

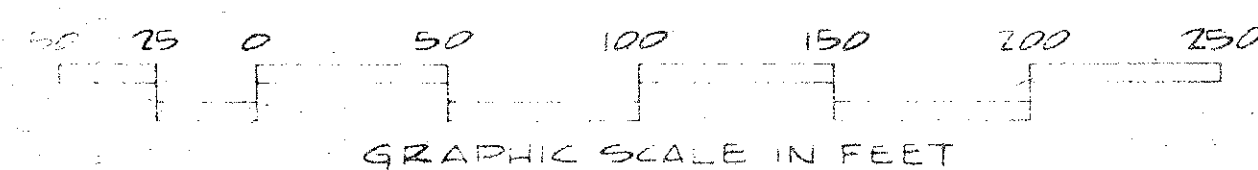
L.W.D.D. CANAL LATERAL NO. 2



PALM BEACH FARMS CO. PLAT NO. 3  
TRACT 12, BLOCK 3  
PLAT BOOK 2, PAGE 45

PALM BEACH FARMS CO. PLAT NO. 3  
TRACT 7, BLOCK 3  
PLAT BOOK 2, PAGE 45

MATCH LINE SEE SHEET 3



|                      |                                   |                  |
|----------------------|-----------------------------------|------------------|
| Field Book No. Pg.   | ROBERT E. OWEN & ASSOCIATES, INC. | Job No. 80-160   |
| Design               | ENGINEERS - PLANNERS - SURVEYORS  | Scale 1" = 50'   |
| Drawn                | WEST PALM BEACH FLORIDA           | Date AUG., 1980  |
| Checked L.A. MATTHES |                                   | Sheet 2 of 4     |
|                      |                                   | File No. BF-2319 |

GOLDEN LAKES VILLAGE SECTION NINE REPLAT SHEET 2 OF 4 SHEETS

0251-305