

40-189

189

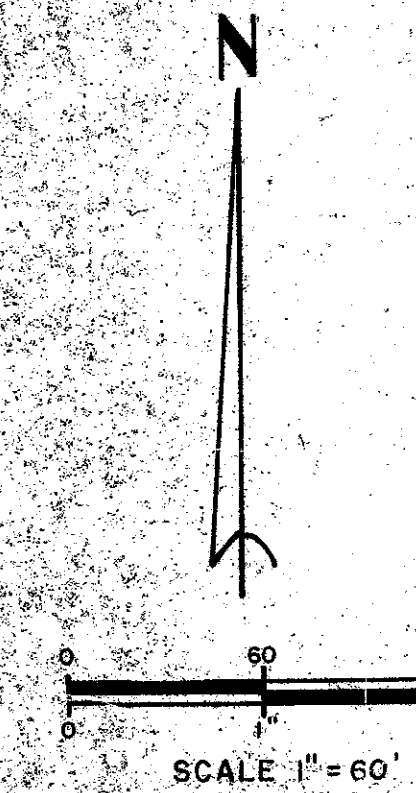
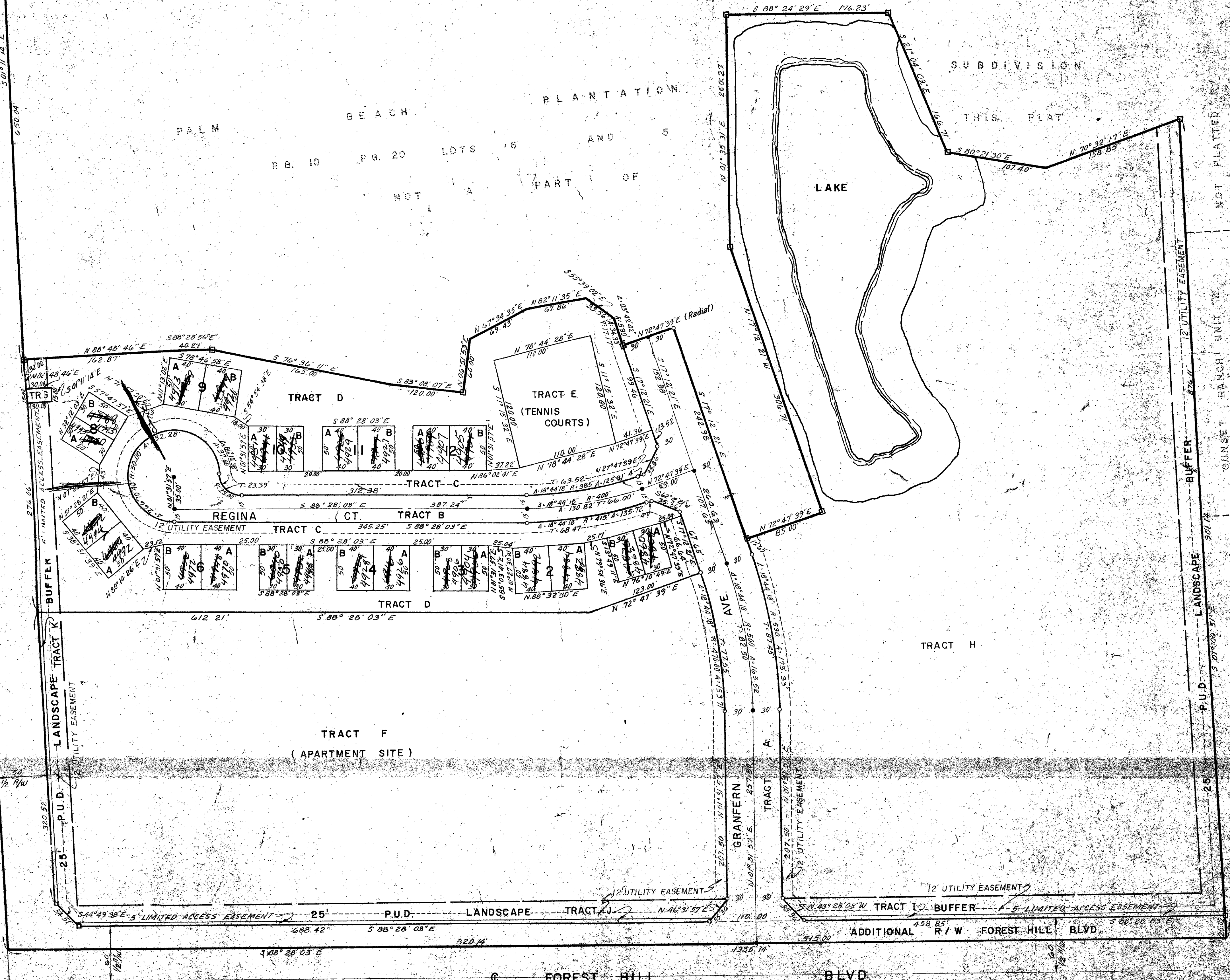
PART OF A PLANNED UNIT DEVELOPMENT PALM HILL VILLAS UNIT ONE

A REPLAT OF A PORTION OF LOTS 5 & 6 BLOCK 3 SECTION 12 TOWNSHIP 44 SOUTH,
RANGE 42 EAST OF PALM BEACH PLANTATIONS SUBDIVISION
AS RECORDED IN PLAT BOOK 10, PAGE 20 OF
THE PUBLIC RECORDS OF
PALM BEACH COUNTY,
FLORIDA



N.W. COR. OF SW 1/4 SEC. 12-44-42
P.O.B.
NORTH LINE OF SW 1/4 101' SEC. 12-44-42

WEST LINE OF NW 1/4 OF SW 1/4 SEC. 12-44-42
1295.55
RD. HARVERHILL



Palm Hill Villas #1
40/189
0290-300