

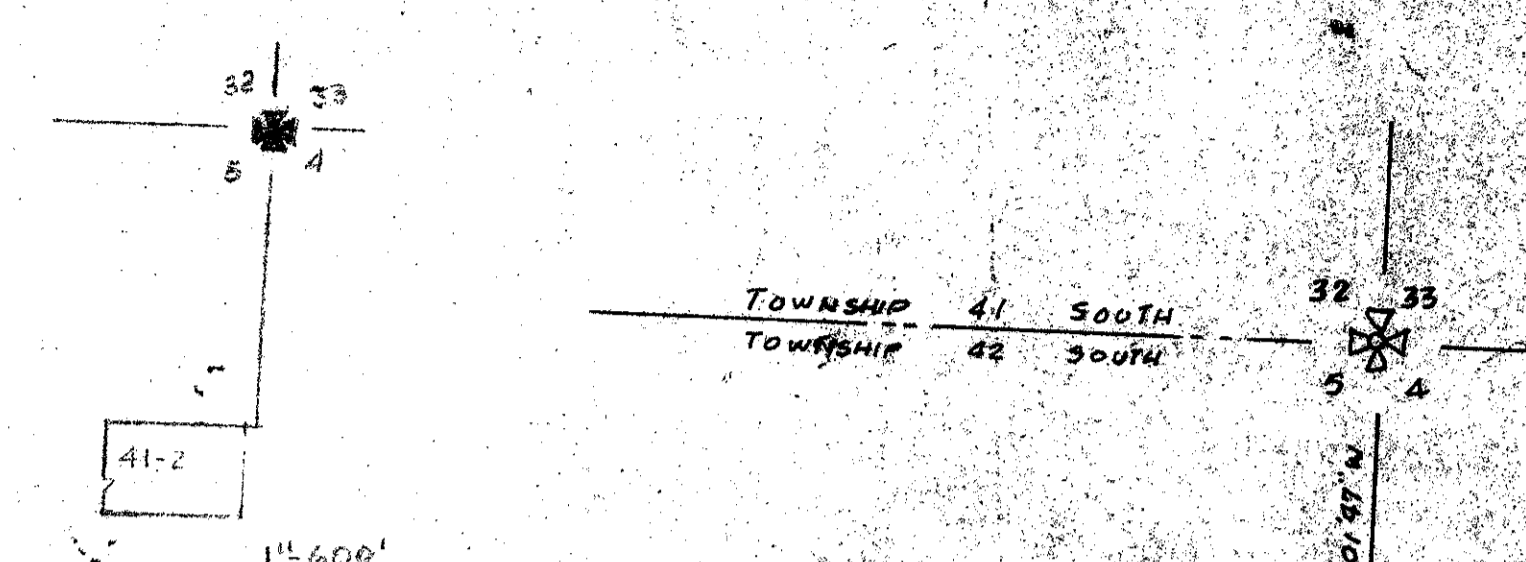
41-2

2

JUNO COVE PLAT 2

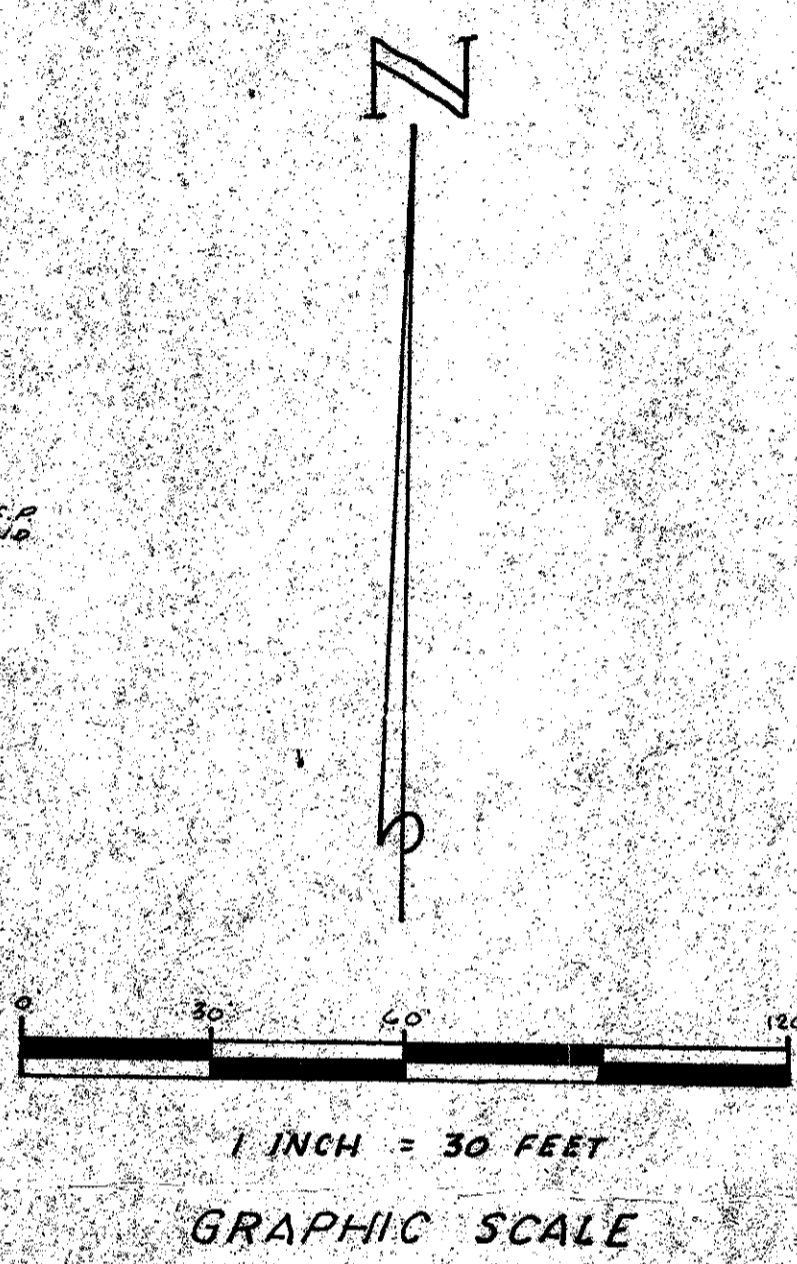
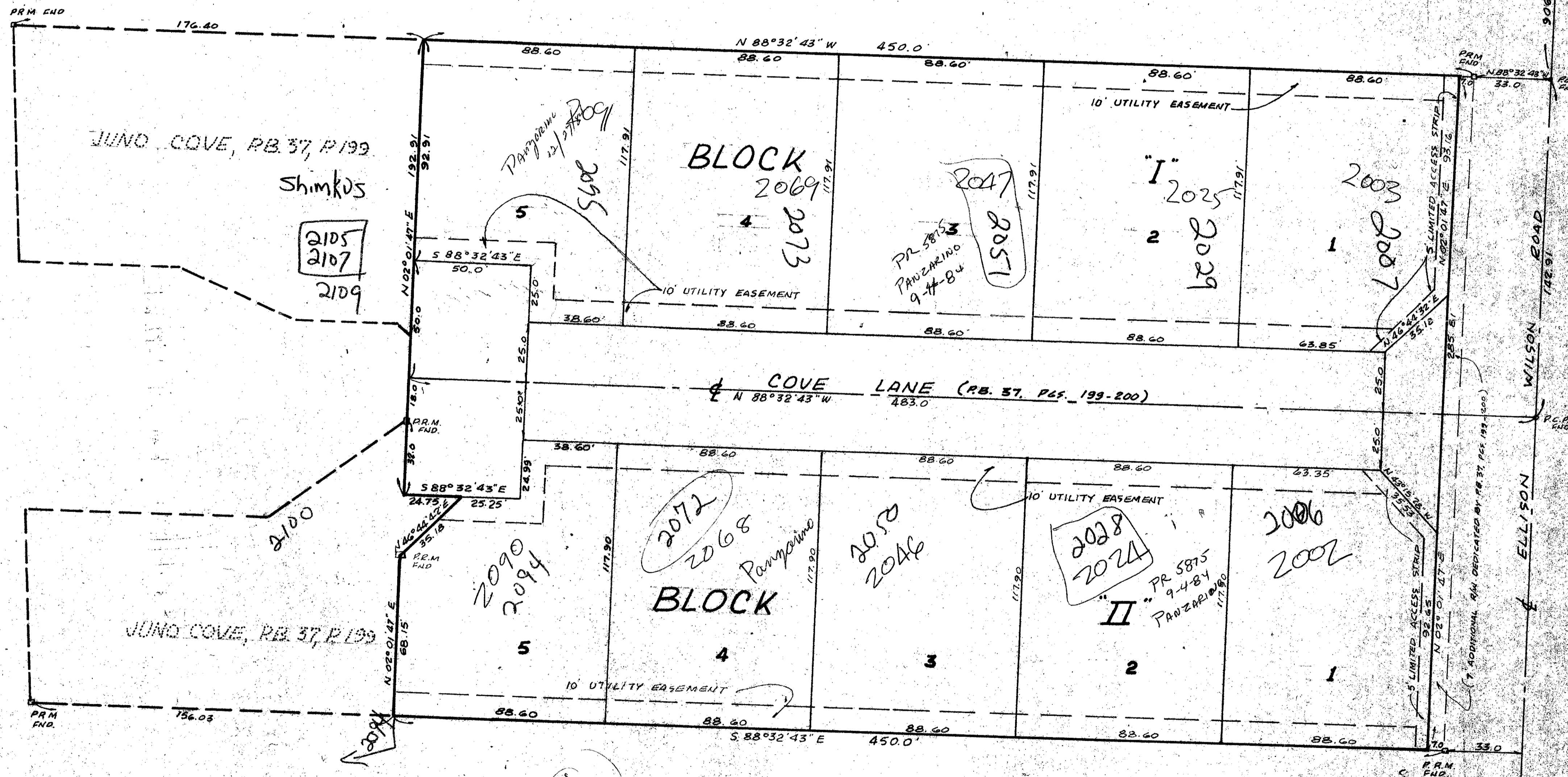
SECTION 5, T42S, R43E, PALM BEACH COUNTY, FLORIDA
REPLAT OF LOTS A&B, BLOCK "I," AND LOTS A&B, BLOCK "II," JUNO
COVE, PLAT BOOK 37, PGS. 199-200

JULY 1980
SHEET 2



UNRECORDED A.M. 42

INTRACOASTAL WATERWAY



BEARING DATUM

ALL BEARINGS SHOWN HEREON ARE BASED ON AN ASSUMED BEARING OF S 02° 01' 47" W ALONG THE EAST LINE OF THE NORTH HALF OF THE N.E. 1/4 OF SECTION 5, T42S, R43E.

NOTES

- NO BUILDINGS OR ANY KIND OF CONSTRUCTION OR TREES SHALL BE PLACED WITHIN EASEMENTS.
- ALL EASEMENTS AND COVE ROAD, SHOWN HEREON, WERE DEDICATED BY "JUNO COVE," PB. 37, PGS. 199 & 200.

- P.C.P. INDICATES PERMANENT CONTROL POINT
- ◉ P.R.M. INDICATES PERMANENT REFERENCE MONUMENT

SIDEWALK REQUIRED

TURNOUT REQUIRED

SIDEWALK REQUIRED

Imp Area 1
FSZ-7
RM AS(7)
5/42/43
(B)

1000-009
JUNO COVE PL. 2
41/2

THIS INSTRUMENT WAS PREPARED BY
ROBERT A. TUBSO,
225 NORTH "J" STREET
LAKE WORTH, FLORIDA, 33460
(305-585-1695)