

LEE'S CROSSING PLAT NO. I (P.U.D.)

LYING IN THE SOUTHEAST ONE-QUARTER OF SECTION 34, TOWNSHIP 44 SOUTH, RANGE 42 EAST, PALM BEACH COUNTY, FLORIDA.

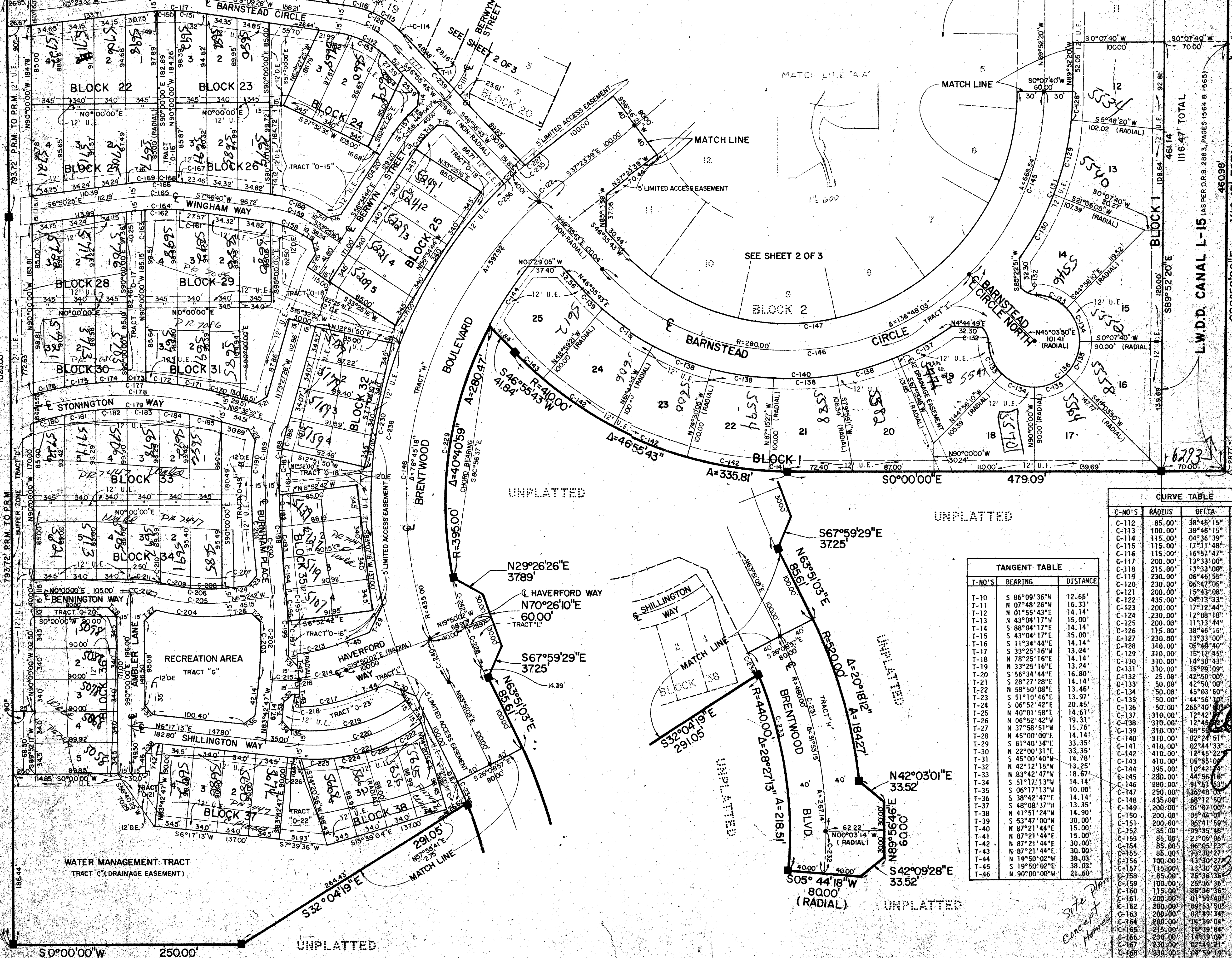
APRIL, 1980

SHEET 3 OF 3

SEE SHEET 2 OF 3

41-3

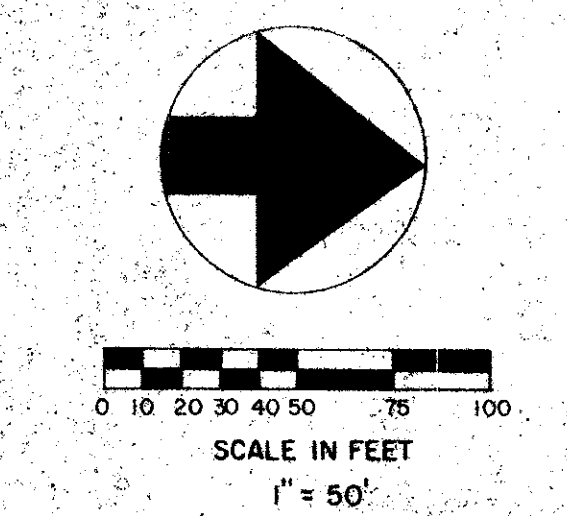
3



STATE OF FLORIDA
COUNTY OF PALM BEACH

THIS PLAT WAS FILED FOR RECORD AT 9:51 AM THIS DAY OF APRIL AD, 1980 AND DULY RECORDED IN PLAT BOOK 41 ON PAGES 4 AND 5

JOHN B. DUNKLE, CLERK
CIRCUIT COURT
BY *[Signature]*



CURVE TABLE

C-NO'S	RADIUS	DELTA	ARC
C-171	390.00'	05°05'03"	34.61'
C-172	390.00'	05°05'39"	34.67'
C-173	390.00'	02°56'23"	20.01'
C-174	390.00'	05°04'29"	34.54'
C-175	390.00'	05°02'24"	34.31'
C-176	390.00'	05°11'46"	35.37'
C-177	390.00'	31°46'47"	216.32'
C-178	375.00'	32°24'18"	212.09'
C-179	360.00'	33°05'04"	207.88'
C-180	360.00'	05°39'15"	35.53'
C-181	360.00'	05°28'07"	34.36'
C-182	360.00'	05°25'10"	34.05'
C-183	360.00'	05°25'10"	34.05'
C-184	360.00'	05°28'07"	34.36'
C-185	360.00'	05°39'15"	35.53'
C-186	225.00'	06°12'35"	24.39'
C-187	225.00'	10°19'57"	40.58'
C-188	225.00'	16°32'32"	64.96'
C-189	240.00'	16°32'32"	69.29'
C-190	255.00'	11°07'44"	49.53'
C-191	985.00'	00°35'01"	10.03'
C-192	985.00'	02°00'56"	34.65'
C-193	985.00'	01°58'52"	34.06'
C-194	985.00'	01°58'42"	34.01'
C-195	985.00'	00°19'12"	5.50'
C-196	415.00'	04°00'25"	29.02'
C-197	415.00'	05°31'53"	40.06'
C-198	985.00'	06°52'42"	118.25'
C-199	415.00'	09°32'19"	69.09'
C-200	000.00'	06°52'42"	120.05'
C-201	015.00'	05°28'51"	97.09'
C-202	400.00'	13°09'55"	91.91'
C-203	385.00'	09°20'34"	62.78'
C-204	230.00'	20°55'00"	83.97'
C-205	215.00'	22°11'48"	83.29'
C-206	200.00'	22°11'48"	77.48'
C-207	200.00'	02°03'53"	7.21'
C-208	200.00'	09°53'45"	34.54'
C-209	200.00'	09°54'14"	34.57'
C-210	200.00'	00°19'56"	1.16'
C-211	115.00'	15°38'06"	30.75'
C-212	100.00'	15°19'06"	26.74'
C-213	150.66'	17°11'45"	45.22'
C-214	180.66'	17°11'45"	54.22'
C-215	180.66'	08°55'29"	28.14'
C-216	180.66'	26°07'15"	82.36'
C-217	210.66'	17°11'45"	63.22'
C-218	195.66'	01°56'34"	6.63'
C-219	165.00'	42°30'13"	122.40'
C-220	310.00'	13°30'13"	133.53'
C-221	310.00'	12°45'22"	144.66'
C-222	310.00'	02°44'33"	35.82'
C-223	195.00'	10°02'29"	34.17'
C-224	195.00'	10°02'29"	34.17'
C-225	195.00'	10°02'29"	35.82'
C-226	195.00'	02°44'33"	4.67'
C-227	195.00'	02°44'33"	21.03'
C-228	390.00'	06°08'55"	43.54'
C-229	390.00'	06°15'04"	45.64'
C-230	475.00'	59°58'01"	497.14'
C-231	280.00'	28°08'43"	218.62'
C-232	480.00'	06°44'21"	48.52'
C-233	440.00'	03°53'14"	244.88'
C-234	440.00'	03°26'01"	26.37'
C-235	475.00'	01°48'39"	15.01'
C-236	475.00'	01°48'39"	15.00'
C-237	475.00'	03°37'13"	30.91'
C-238	475.00'	06°45'18"	62.90'
C-239	100.00'	08°37'37"	15.08'
C-240	435.00'	06°18'26"	43.85'
C-241	454.00'	06°18'26"	45.85'
C-242	395.00'	09°34'55"	158.91'

CURVE TABLE

C-NO'S	RADIUS	DELTA	ARC
C-112	85.00'	38°46'15"	57.52'
C-113	100.00'	38°46'15"	67.67'
C-114	115.00'	04°36'39"	9.25'
C-115	115.00'	17°11'48"	34.52'
C-116	115.00'	16°57'47"	34.05'
C-117	200.00'	13°33'00"	47.30'
C-118	215.00'	13°33'00"	50.85'
C-119	230.00'	06°45'55"	27.16'
C-120	230.00'	06°47'05"	27.24'
C-121	200.00'	15°43'08"	54.87'
C-122	435.00'	04°13'33"	32.08'
C-123	200.00'	17°12'44"	60.08'
C-124	230.00'	12°08'18"	48.73'
C-125	200.00'	11°13'44"	39.20'
C-126	115.00'	38°46'15"	77.82'
C-127	230.00'	13°33'00"	54.39'
C-128	310.00'	05°40'40"	30.72'
C-129	310.00'	15°17'45"	82.76'
C-130	310.00'	14°30'43"	78.52'
C-131	310.00'	35°29'09"	192.00'
C-132	25.00'	42°50'00"	18.69'
C-133	50.00'	42°50'00"	37.38'
C-134	50.00'	45°03'50"	39.33'
C-135	50.00'	44°56'10"	39.24'
C-136	50.00'	26°54'00"	42.84'
C-137	310.00'	12°42'42"	63.84'
C-138	310.00'	12°45'22"	64.87'
C-139	310.00'	05°55'22"	32.66'
C-140	310.00'	02°24'51"	44.90'
C-141	410.00'	02°44'33"	19.62'
C-142	410.00'	12°45'22"	57.28'
C-143	410.00'	10°42'04"	73.78'
C-144	280.00'	44°56'10"	219.01'
C-145	280.00'	44°56'10"	219.01'
C-146	280.00'	91°51'53"	444.94'
C-147	250.00'	136°48'03"	596.91'
C-148	435.00'	68°12'50"	517.89'
C-149	200.00'	01°07'00"	3.90'
C-150	200.00'	05°44'01"	20.01'
C-151	200.00'	06°41'59"	23.39'
C-152	85.00'	99°35'36"	14.24'
C-153	85.00'	23°05'06"	34.26'
C-154	85.00'	06°05'23"	9.02'
C-155	205.00'	13°30'27"	38.09'
C-156	100.00'	13°30'27"	23.58'
C-157	115.00'	13°30'27"	27.11'
C-158	85.00'	25°36'36"	37.99'
C-159	100.00'	25°36'36"	44.70'
C-160	115.00'	25°36'36"	51.40'
C-161	200.00'	01°55'40"	6.73'
C-162	200.00'	09°53'50"	34.55'
C-163	200.00'	02°49'34"	9.87'
C-164	200.00'	14°39'04"	51.14'
C-165	215.00'	18°02'04"	64.98'
C-166	230.00'	14°39'04"	58.81'
C-167	230.00'	02°49'21"	11.33'
C-168	230.00'	04°59'18"	20.03'
C-169	230.00'	06°50'25"	27.46'
C-170	390.00'	03°21'03"	22.81'

TANGENT TABLE

T-NO'S	BEARING	DISTANCE
T-10	S 86°09'36"W	12.65'
T-11	N 07°48'26"W	16.33'
T-12	N 01°55'43"E	14.14'
T-13	N 43°04'17"W	15.00'
T-14	S 88°04'17"E	14.14'
T-15	S 43°04'17"E	15.00'
T-16	S 11°34'44"E	14.14'
T-17	S 33°25'16"W	13.24'
T-18	N 78°25'16"E	14.14'
T-19	N 33°25'16"E	13.24'
T-20	S 56°34'44"E	16.80'
T-21	S 28°27'28"E	14.14'
T-22	N 58°50'08"E	13.46'
T-23	S 51°10'46"E	13.97'
T-24	S 06°52'42"E	20.45'
T-25	N 40°01'58"E	14.61'
T-26	N 06°52'42"W	19.31'
T-27	N 37°58'51"W	15.76'
T-28	N 45°00'00"E	14.14'
T-29	S 61°40'34"E	33.35'
T-30	N 22°00'31"E	33.35'
T-31	S 45°00'40"W	14.78'
T-32	N 42°12'15"W	13.25'
T-33	N 83°42'47"W	18.67'
T-34	S 51°17'13"W	14.14'
T-35	S 06°17'13"W	10.00'
T-36	S 38°42'47"E	14.14'
T-37	S 48°08'37"W	13.35'
T-38	N 41°51'24"W	14.90'
T-39	S 53°47'00"W	30.00'
T-40	N 87°21'44"E	15.00'
T-41	N 87°21'44"E	15.00'
T-42	N 87°21'44"E	30.00'
T-43	N 87°21'44"E	30.00'
T-44	N 19°50'02"W	38.03'
T-45	S 19°50'02"E	38.03'
T-46	N 90°00'00"W	21.60'

Meridian
Surveying and Mapping Inc.
2228 So. Congress Ave.
West Palm Beach, FL 33406
LEE'S CROSSING PLAT NO. I (P.U.D.) APRIL 1980
79-P-163