

41-25

MELROSE PARK SECTION 1

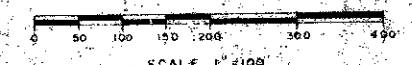
A PLAT OF A PORTION OF SECT. 7 8 18, TOWNSHIP 45 SOUTH, RANGE 42 EAST
AND ALSO BEING A REPLAT OF TRACTS 1 THROUGH 44 AND 46 THROUGH 61, BLOCK 45, PALM BEACH FARMS
COMPANY, PLAT NO. 3, AS RECORDED IN PLAT BOOK 2, PAGE 49, PUBLIC RECORDS OF PALM BEACH COUNTY, FLORIDA

25

JOHN A. GRANT, JR., INC.

PALM BEACH COUNTY, FLORIDA
CONSULTING ENGINEERS AND LAND SURVEYORS

BOCA RATON, FLORIDA

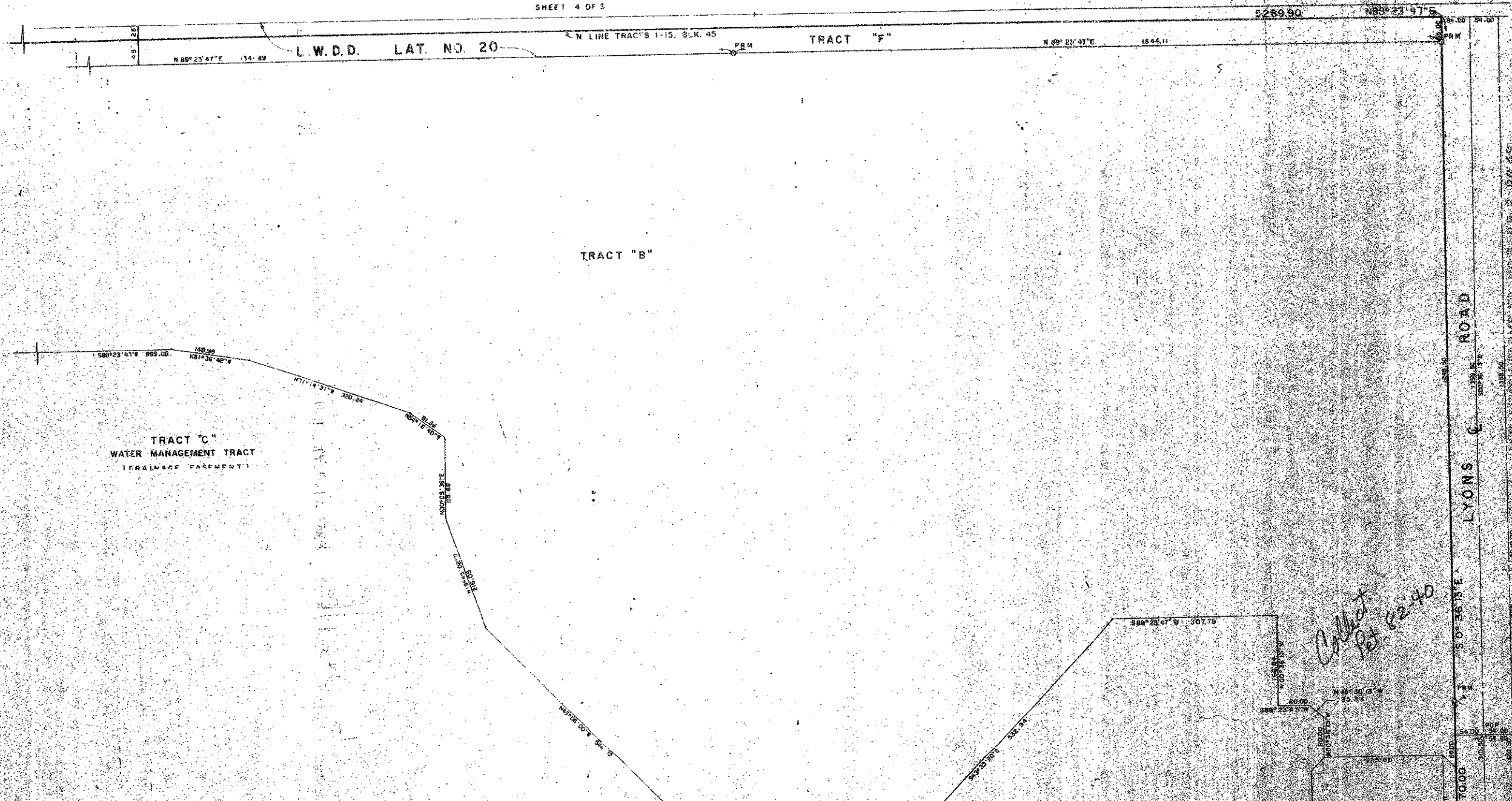


SCALE 1" = 100'

OCTOBER 1979

SHEET 4 OF 5

PALM BEACH FARMS CO. NO. 3, P.B. ET AL.



TRACT "C"
WATER MANAGEMENT TRACT
(EASEMENT)

TRACT "B"

TRACT "F"

NOTE: Bearings shown hereon are based on a bearing of N 89° 23' 47" E along the East right-of-way line of State Road 7 (U.S. 441).

NOTE: No buildings, trees, or shrubs will be placed on easements.

- P.R.M. Indicates Permanent Reference Monument
- P.C.P. Indicates Permanent Control Point
- E.E. Indicates Easement
- D.E. Indicates Driveway Easement
- A.E. Indicates Access Easement

Collect Pt R240

MELROSE PARK
4/25 0225-00