

41-36

A PORTION OF A P.U.D. BANNOCK AT INDIAN SPRING

Being a Re-plot of Tract "B," Indian Spring Plat No. 3, as recorded in
Plat Book 41 Pages 6 Through 8, Public Records, Palm Beach County, Florida, Lying
in Section 34, Township 45 South, Range 42 East, and in Section 35,
Township 45 South, Range 42 East, Palm Beach County, Florida.
August, 1980

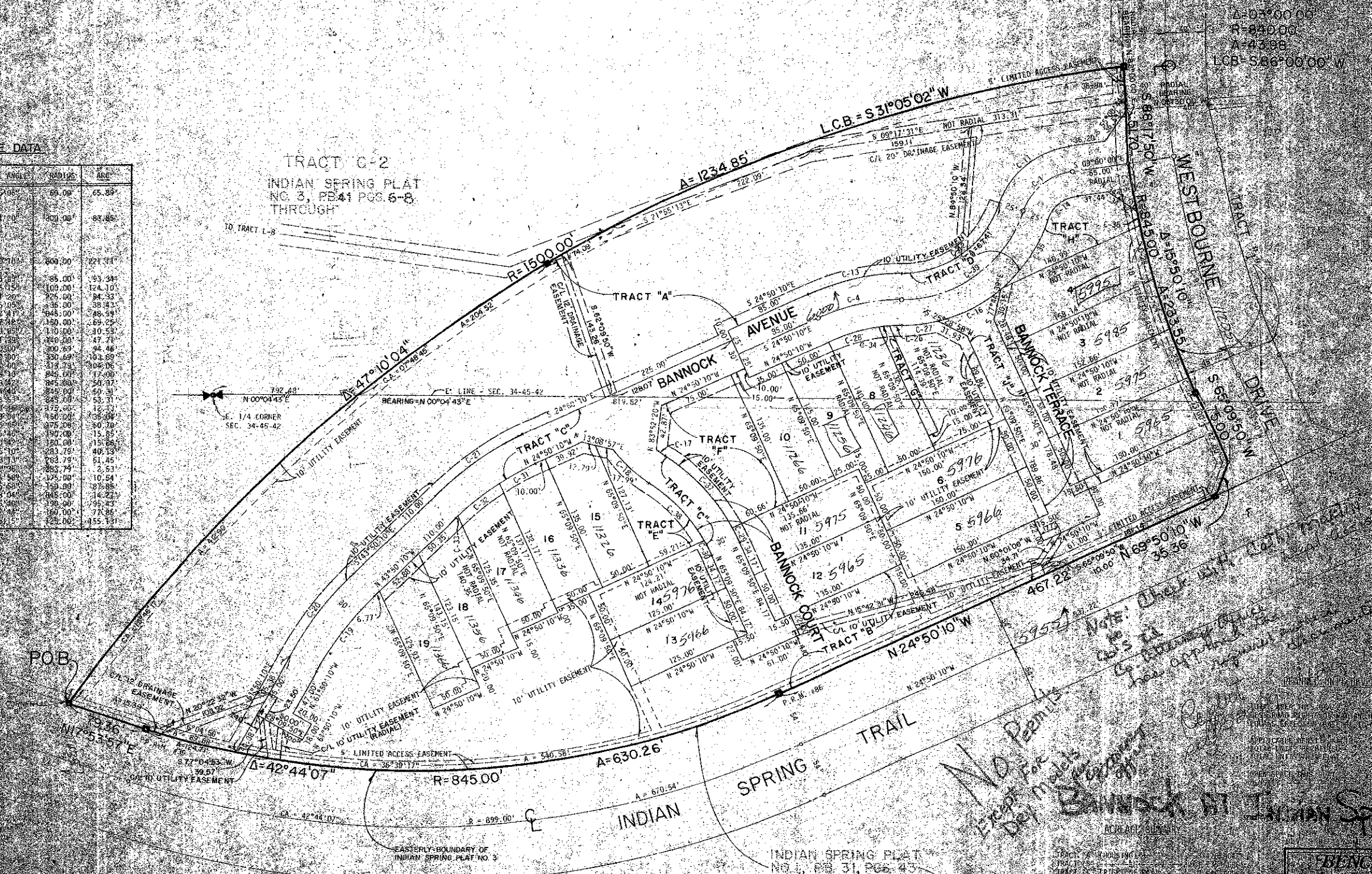
36



OPTIONAL
CORRECTION
THIS PLAN WAS FILED FOR
RECORD IN THE
PUBLIC RECORDS OF
PALM BEACH COUNTY, FLORIDA
ON PAGE
41-36
BY
JOHN B. BUNKER, CLERK
CLERK OF COURT
BY

A=87°00'00"
R=840.00'
A=43°38'
L.C.B.=586°00'00" W

CHORD	CENTRAL ANGLE	CHORDS	ARC
100.00	90.00	65.89	
141.70	100.00	83.85	
170.00	109.00	101.41	
185.00	115.00	113.34	
195.00	119.00	124.10	
200.00	122.00	133.81	
202.00	124.00	142.59	
203.00	125.00	150.46	
204.00	126.00	157.43	
205.00	127.00	163.59	
206.00	128.00	169.04	
207.00	129.00	173.88	
208.00	130.00	178.21	
209.00	131.00	182.13	
210.00	132.00	185.64	
211.00	133.00	188.75	
212.00	134.00	191.55	
213.00	135.00	194.04	
214.00	136.00	196.23	
215.00	137.00	198.12	
216.00	138.00	199.71	
217.00	139.00	201.10	
218.00	140.00	202.29	
219.00	141.00	203.28	
220.00	142.00	204.07	
221.00	143.00	204.66	
222.00	144.00	205.05	
223.00	145.00	205.24	
224.00	146.00	205.23	
225.00	147.00	205.02	
226.00	148.00	204.61	
227.00	149.00	204.00	
228.00	150.00	203.19	
229.00	151.00	202.18	
230.00	152.00	201.07	
231.00	153.00	199.86	
232.00	154.00	198.55	
233.00	155.00	197.14	
234.00	156.00	195.63	
235.00	157.00	194.02	
236.00	158.00	192.31	
237.00	159.00	190.50	
238.00	160.00	188.59	
239.00	161.00	186.58	
240.00	162.00	184.47	
241.00	163.00	182.26	
242.00	164.00	179.95	
243.00	165.00	177.54	
244.00	166.00	175.03	
245.00	167.00	172.42	
246.00	168.00	169.71	
247.00	169.00	166.90	
248.00	170.00	164.09	
249.00	171.00	161.28	
250.00	172.00	158.47	
251.00	173.00	155.66	
252.00	174.00	152.85	
253.00	175.00	150.04	
254.00	176.00	147.23	
255.00	177.00	144.42	
256.00	178.00	141.61	
257.00	179.00	138.80	
258.00	180.00	136.00	
259.00	181.00	133.20	
260.00	182.00	130.40	
261.00	183.00	127.60	
262.00	184.00	124.80	
263.00	185.00	122.00	
264.00	186.00	119.20	
265.00	187.00	116.40	
266.00	188.00	113.60	
267.00	189.00	110.80	
268.00	190.00	108.00	
269.00	191.00	105.20	
270.00	192.00	102.40	
271.00	193.00	99.60	
272.00	194.00	96.80	
273.00	195.00	94.00	
274.00	196.00	91.20	
275.00	197.00	88.40	
276.00	198.00	85.60	
277.00	199.00	82.80	
278.00	200.00	80.00	



*No Permit
Except For
Del. Models
Bannock at Indian Springs*

*Note: Check with City of Del. for
City's 1/2
City Ordinance
how app. required*

*0257-301
Corder
1/2
1/2*

BENCH MARK
Lead surveying staff

HOUSING TRACT "B"
INDIAN SPRING