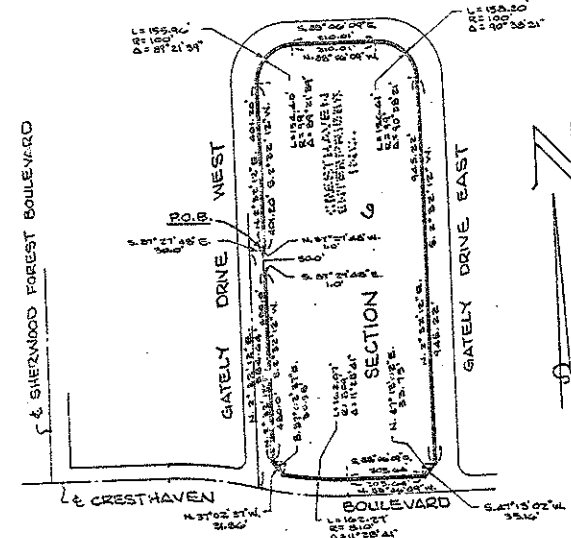
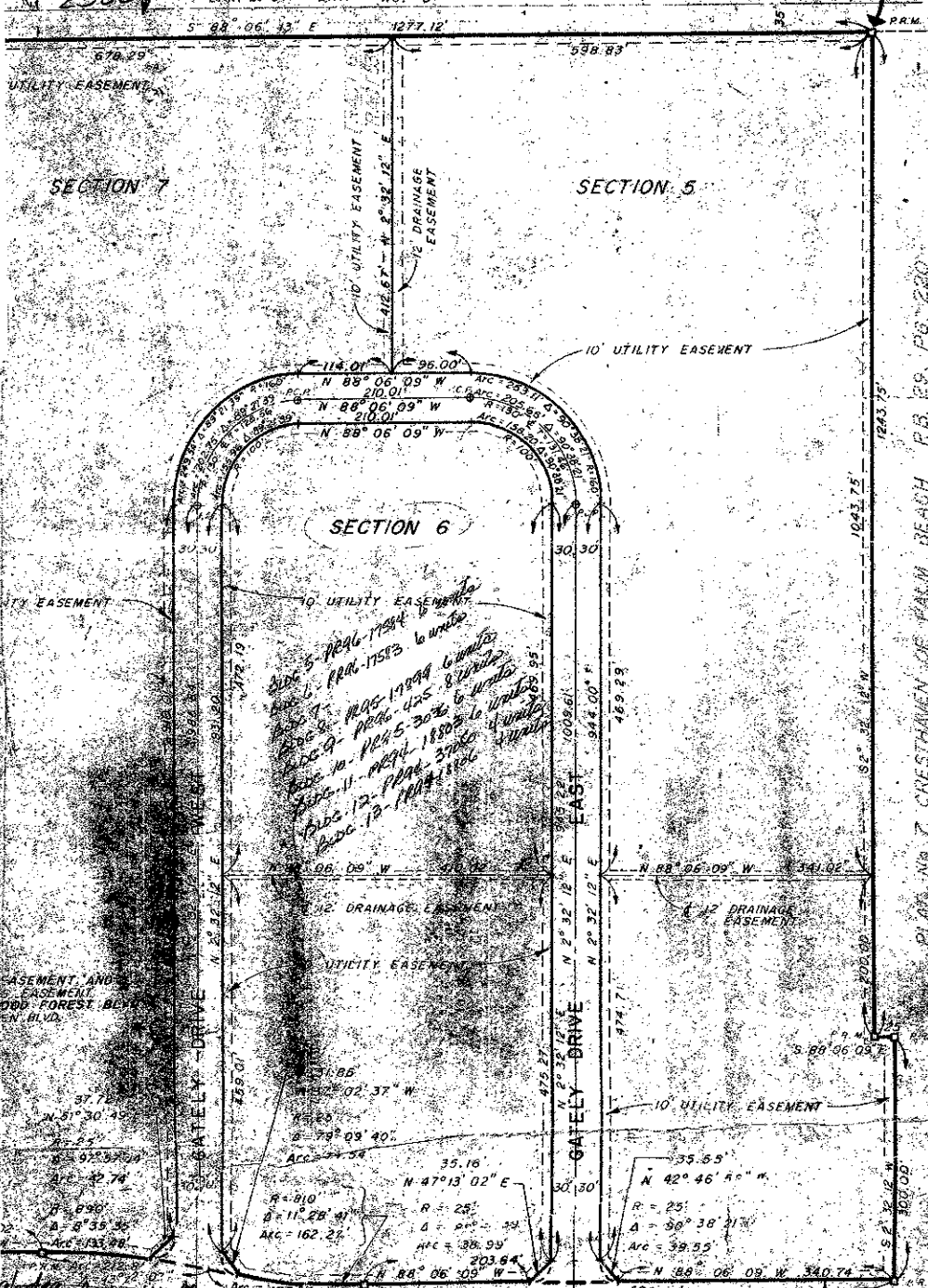


PLAT No. 9 CRESTHAVEN OF PALM BEACH IN SECTION 14, TWP. 44 S., RGE. 42 E., PALM BEACH COUNTY, FLORIDA

Being a replat of Tracts 53, 54, 59, 60 and part of Tracts 55 and 58 and part of the abandoned 40 foot wide road lying Easterly of said Tracts 53, 54 and 55 of Model Land Company, Subdivision of Section 14, Township 44 South, Range 42 East, recorded in Plat Book 3, Page 78 of Public Records of Palm Beach County, Florida.

1/4 SECTION SW 1/4 SEC. 14, TWP. 44 S., RGE. 42 E.
L.W.D. & LAT. NO. 9
2500' 5 82° 06' 12" E 1277.12' 998.83'



56

DEDICATION

KNOW ALL MEN BY THESE PRESENTS that Cresthaven, Inc., a Florida Corporation, owner of the land shown herein, Section 14, Township 44 South, Range 42 East, Palm Beach County, Florida, shown hereon as Plat No. 9, Cresthaven of Palm Beach, is hereby dedicating to the public the streets and easements particularly described as follows:

COMMENCING at the Northwest corner of Plat No. 1, Cresthaven of Palm Beach, as recorded in Plat Book 22, Page 220, of Public Records of Palm Beach County, Florida, and being the POINT OF BEGINNING, thence South 2° 32' 12\"/>

Containing 45.01 acres, more or less.

Has caused the same to be surveyed and plotted as shown hereon, and hereby dedicates as follows:

STREETS
The streets as shown are hereby dedicated to the BOARD OF COUNTY COMMISSIONERS at Palm Beach County, Florida, for perpetual use of the public for proper purposes.

EASEMENTS
The utility easements as shown hereon are hereby dedicated in perpetuity for the construction, operation and maintenance of utilities.

The drainage easements as shown hereon are hereby dedicated in perpetuity for the construction, operation and maintenance of drainage.

The limited access easements as shown hereon are hereby dedicated to the COUNTY OF PALM BEACH for purposes of limited and jurisdiction over the same.

IN WITNESS WHEREOF, the undersigned, corporation, has caused these presents to be signed by its duly authorized officers and attested to by its Secretary.

ACKNOWLEDGEMENT

STATE OF FLORIDA
COUNTY OF PALM BEACH

BEFORE ME, the undersigned authority, on this 19th day of June, 1960, personally appeared Albert J. Krick, known to me to be the individual designated in and who executed the foregoing instrument, and acknowledged to me that he executed the same for the purposes and consideration therein expressed, and that the instrument was his free and voluntary act and deed.

WITNESSE MY HAND AND SEAL OF OFFICE this 19th day of June, 1960.

Notary Public in and for the State of Florida

Handwritten notes and signatures in the left margin, including names like 'W. J. Krick' and various dates and references to other documents.

Handwritten note: SEE BACK OR 31-300

Handwritten note: 4/56

This instrument was prepared by
ROBERT E. DWIN & ASSOCIATES, INC.
Engineers, Planners and Surveyors
1675 West Palm Beach, Florida

ROBERT E. DWIN & ASSOCIATES, INC.
ENGINEERS, PLANNERS AND SURVEYORS
WEST PALM BEACH, FLORIDA