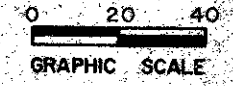


41-58

A Portion of a P.U.D.

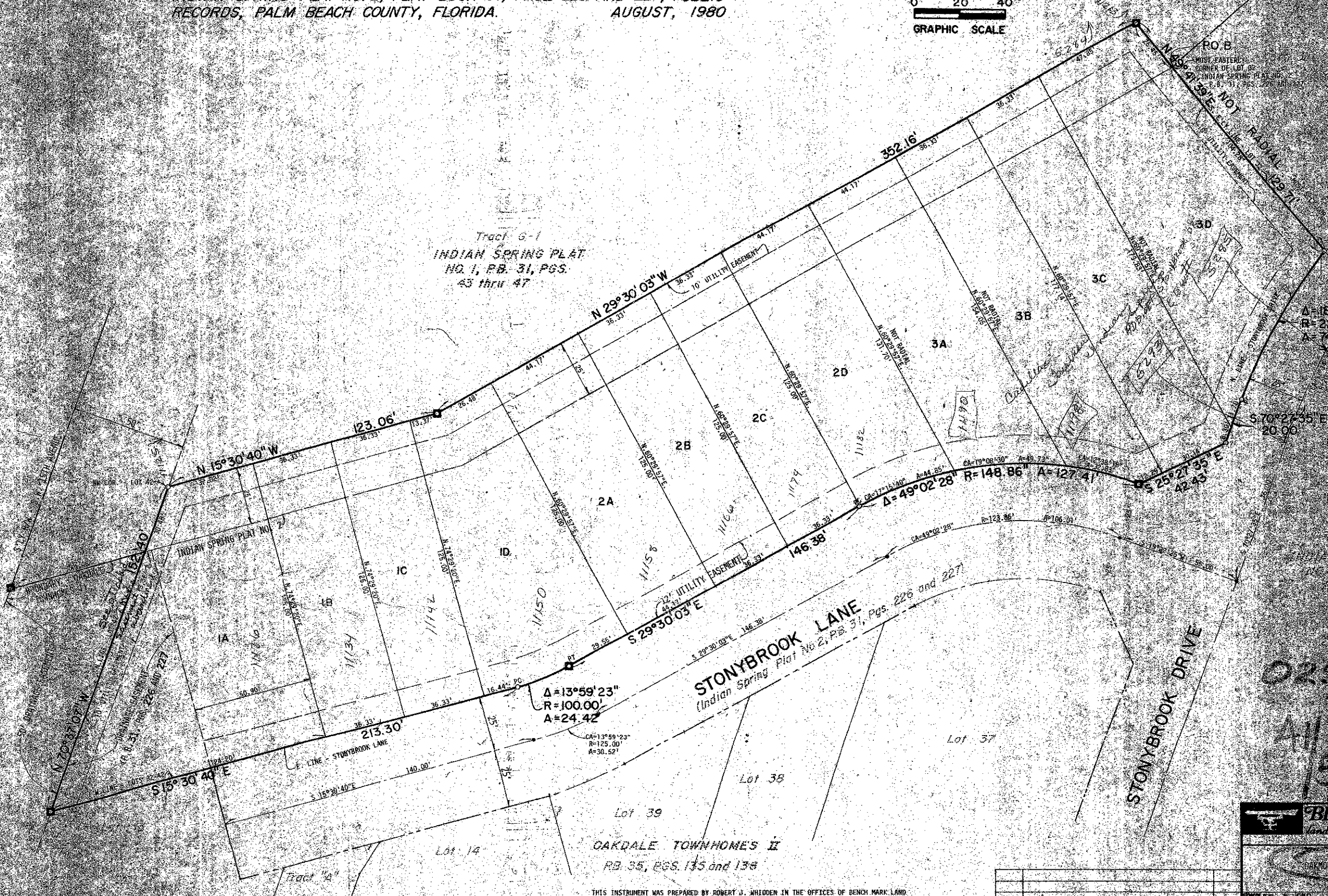
OAKMONT AT INDIAN SPRING

LYING IN SECTION 35, TOWNSHIP 45 S., RANGE 42 E., AND BEING A REPLAT OF A PORTION OF TRACT G-1, INDIAN SPRING PLAT NO. 1, PLAT BOOK 31, PAGES 43 THROUGH 47, AND BEING A REPLAT OF LOTS 32 THROUGH 42, INDIAN SPRING PLAT NO. 2, PLAT BOOK 31, PAGE 226 AND 227, PUBLIC RECORDS, PALM BEACH COUNTY, FLORIDA. AUGUST, 1980



58

FILE OF RECORDS
COUNTY OF PALM BEACH
THIS PLAN WAS FILED FOR
RECORD AT
THE OFFICE OF
THE COUNTY CLERK
ON 8/11/80 AT 10:52 AM
PAGE 1 AND
JAMES H. DUNCAN, CLERK
PUB. REC. DIV.



Tract G-1
INDIAN SPRING PLAT
NO. 1, P.B. 31, PGS.
43 thru 47

STONYBROOK LANE
(Indian Spring Plat No. 2, Pgs. 226 and 227)

STONYBROOK DRIVE

OAKDALE TOWNHOMES II
P.B. 35, PGS. 135 and 138

THIS INSTRUMENT WAS PREPARED BY ROBERT J. WHIDDEN IN THE OFFICES OF BENCH MARK LAND SURVEYING AND MAPPING, INC., 2833 EXCHANGE COURT, WEST PALM BEACH, FLORIDA 33409. PHONE (305) 689-2111



OAKMONT AT INDIAN SPRING

DATE	REVISIONS	BY

0259-502

41/58