

41-66

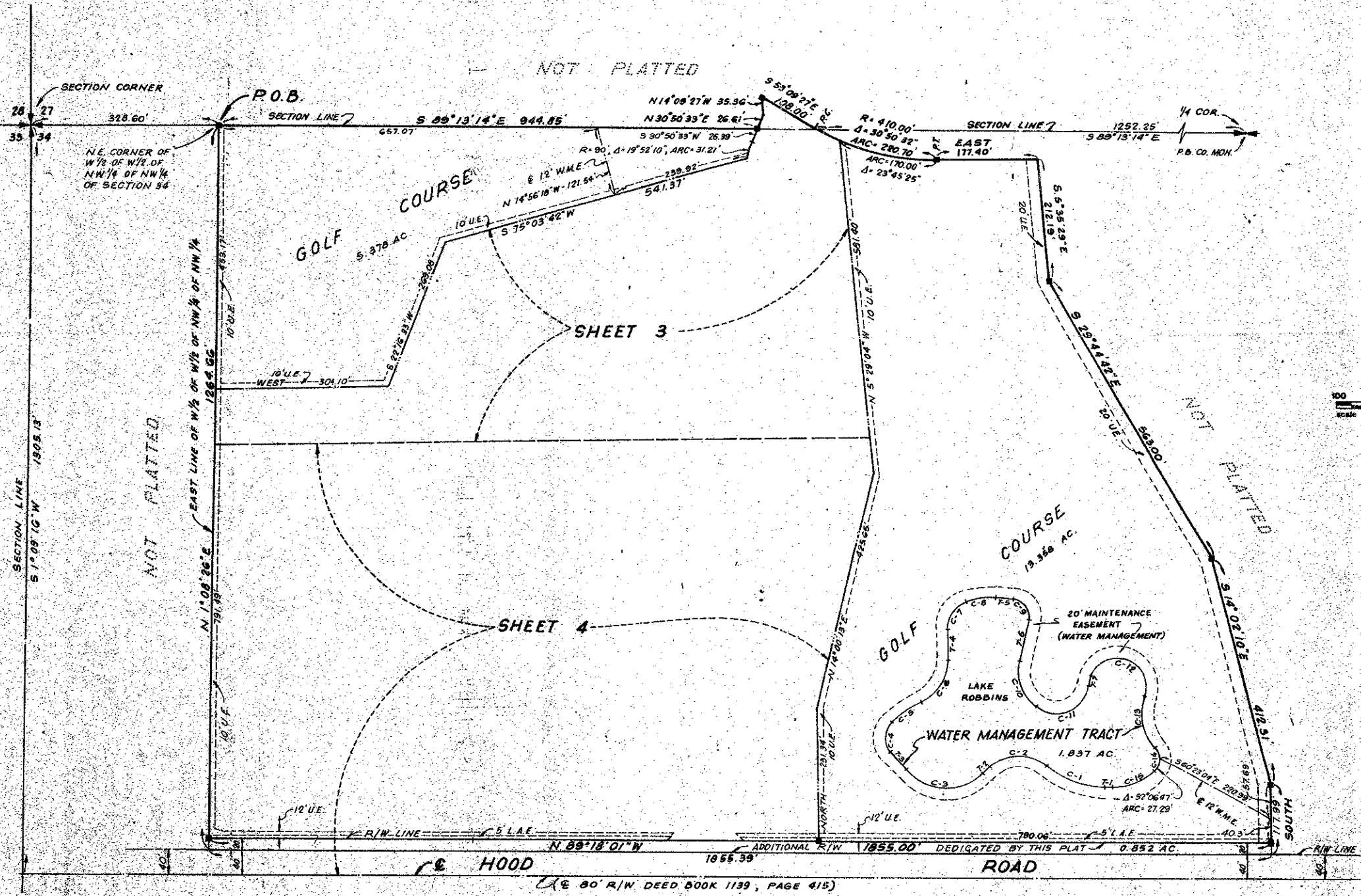
PLAT NO. 10 EASTPOINTE SUBDIVISION

(A PLANNED UNIT DEVELOPMENT)

IN SECTIONS 27 AND 34, TOWNSHIP 41 SOUTH, RANGE 42 EAST

IN 4 SHEETS PALM BEACH COUNTY, FLORIDA SHEET 2

66

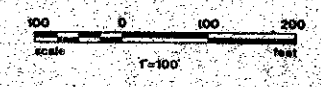
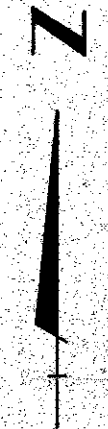


CURVE DATA

NO.	RADIUS	DELTA	ARC LENGTH
C-1	150.00'	42°-37'-20"	114.53'
C-2	71.00'	86°-49'-41"	107.60'
C-3	90.00'	94°-37'-33"	148.38'
C-4	40.00'	87°-40'-00"	58.58'
C-5	150.00'	23°-13'-24"	60.80'
C-6	90.00'	67°-14'-43"	93.89'
C-7	50.00'	67°-08'-40"	58.60'
C-8	110.00'	27°-23'-22"	52.58'
C-9	30.00'	94°-49'-38"	50.70'
C-10	80.00'	68°-04'-34"	89.46'
C-11	55.00'	113°-07'-29"	108.59'
C-12	50.00'	172°-32'-33"	127.45'
C-13	90.00'	62°-36'-34"	98.35'
C-14	30.00'	90°-47'-42"	47.54'
C-15	110.00'	83°-21'-09"	79.07'

WADINGS

NO.	BEARING	LENGTH
W-1	WEST	14.50'
W-2	S 45°-47'-29" E	16.17'
W-3	N 39°-44'-42" W	41.35'
W-4	WEST	51.53'
W-5	S 85°-27'-58" E	50.00'
W-6	S 11°-22'-00" W	74.00'
W-7	N 14°-10'-46" E	17.00'



EASTPOINT Sub. #10
4/1/66 0238-300

NOT PLATTED