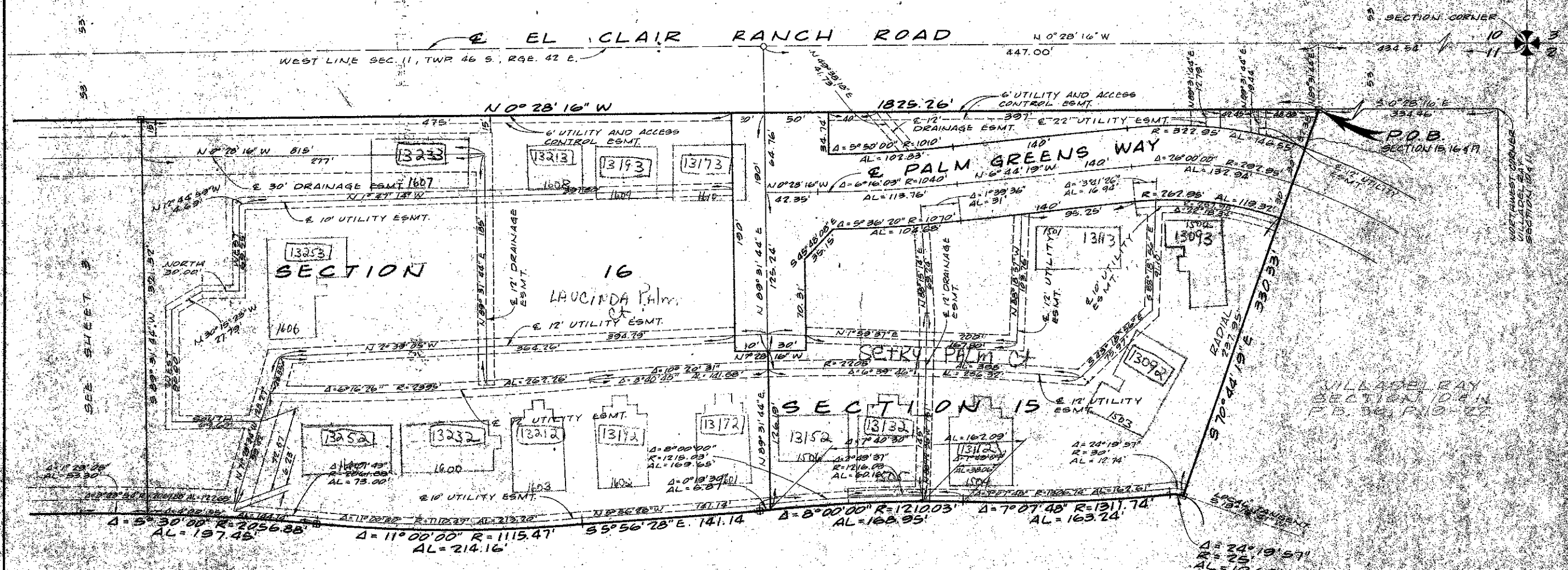
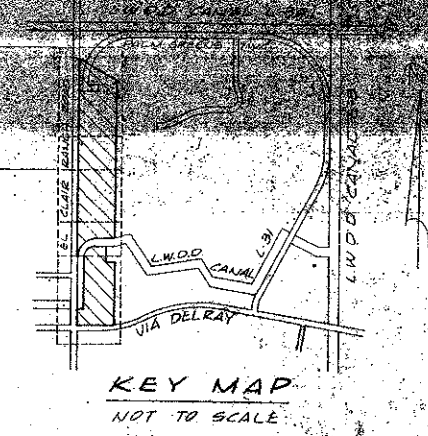


41-70

A PLANNED UNIT DEVELOPMENT
VILLADEL RAY
SECTION 15, 16, 17 AND 18
PALM BEACH COUNTY, FLORIDA
IN 4 SHEETS - SHEET NO. 2

70

PLAT NO. 2
OF
DELRAY VILLAS
P.B. 33, P. 161 & 162

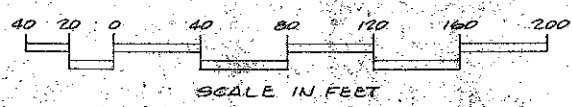


SEE SHEET 3

NOT PLATTED



0324-300
Bldg. ARE APPROX.
IN LOCATION + SHAPE
4/70



Field Book No. Pg.	ROBERT E. OWEN & ASSOCIATES, INC. ENGINEERS PLANNERS SURVEYORS WEST PALM BEACH FLORIDA	A PLANNED UNIT DEVELOPMENT VILLADEL RAY SECTION 15, 16, 17 AND 18 PALM BEACH COUNTY, FLORIDA	Job No. 80-1017 Scale 1" = 40' Date JUNE 1980 Sheet 4 of 2 Plat No. 2
--------------------	---	--	---