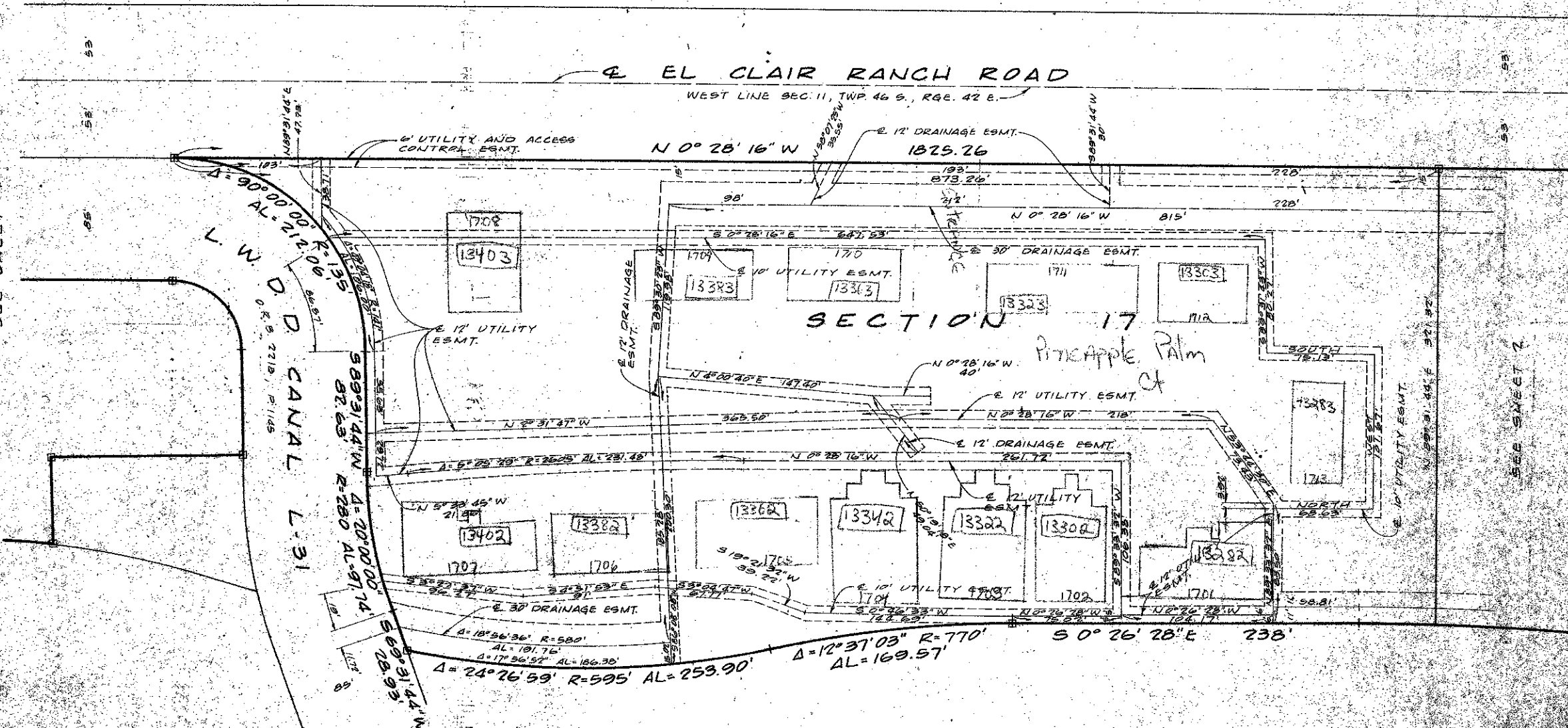
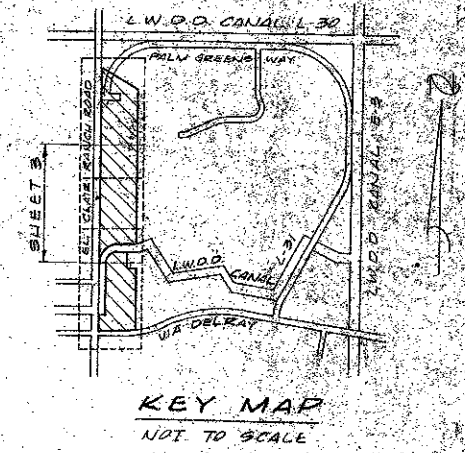


41-71

A PLANNED UNIT DEVELOPMENT  
**VILADEL RAY**  
 SECTION 15, 16, 17 AND 18  
 PALM BEACH COUNTY, FLORIDA  
 IN 4 SHEETS - SHEET NO. 3

71

PLAT NO. 2  
 OF  
 DELRAY VILLAS  
 P.B. 33, P. 161 & 162



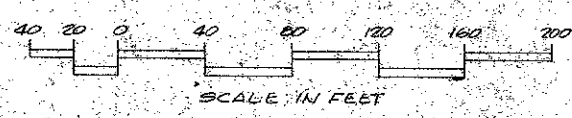
SEE SHEET 4

SEE SHEET 2

NOT PLATTED

0324-300

Blk. ARE APPROX. In Shape + location



|                    |                                   |                            |           |
|--------------------|-----------------------------------|----------------------------|-----------|
| Field Book No. Pg. | ROBERT E. OWEN & ASSOCIATES, INC. | PLANNED UNIT DEVELOPMENT   | 90-1017   |
| Design             | ENGINEERS - PLANNERS - SURVEYORS  | VILADEL RAY                | 1-80      |
| Drawn M. SIKORA    | WEST PALM BEACH FLORIDA           | SECTION                    | JUNE 1980 |
| Checked            |                                   | 15, 16, 17 AND 18          | 3         |
|                    |                                   | PALM BEACH COUNTY, FLORIDA | BF-2308   |