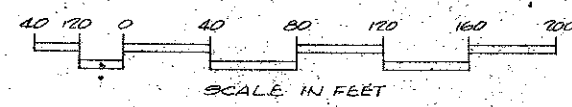
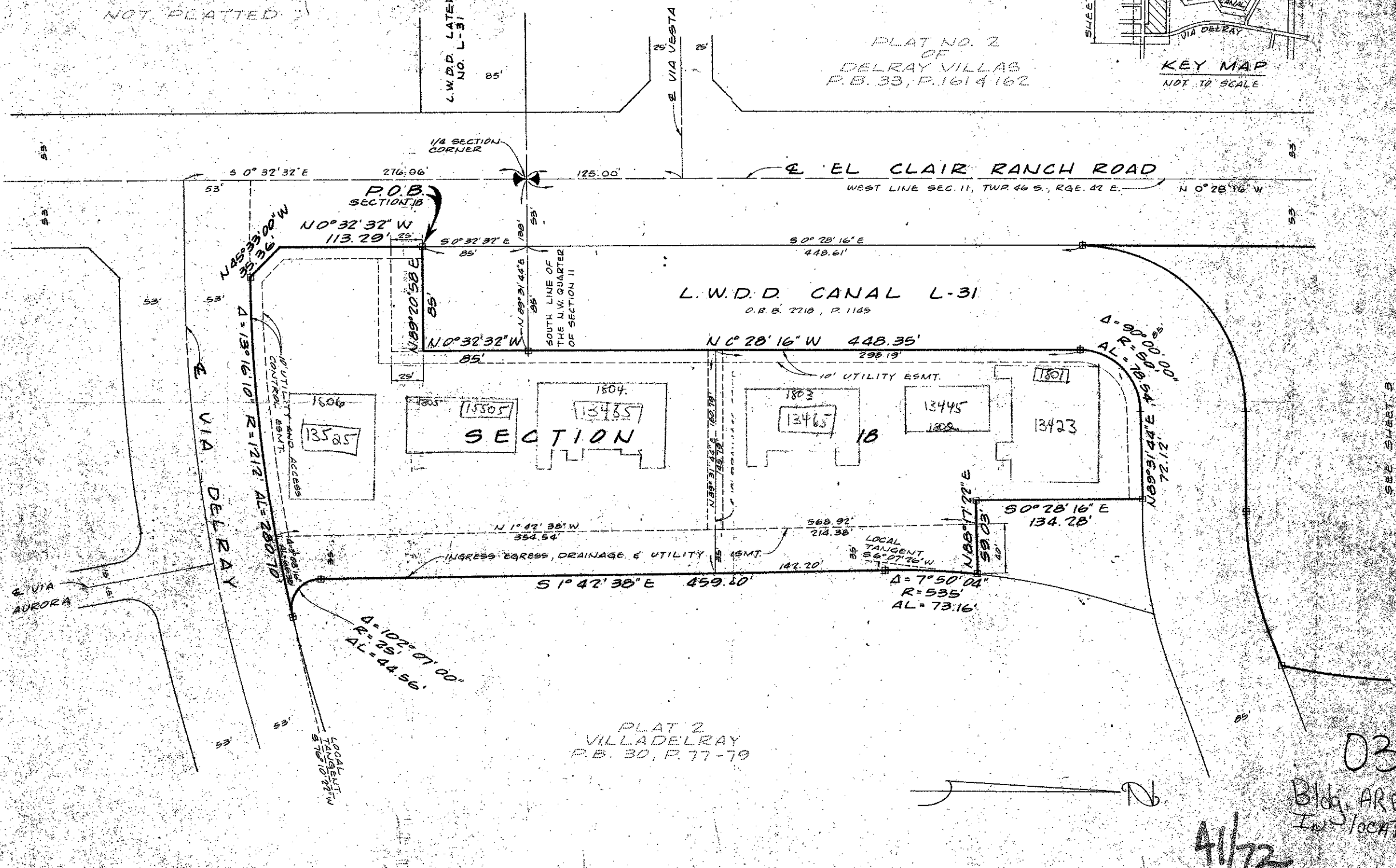
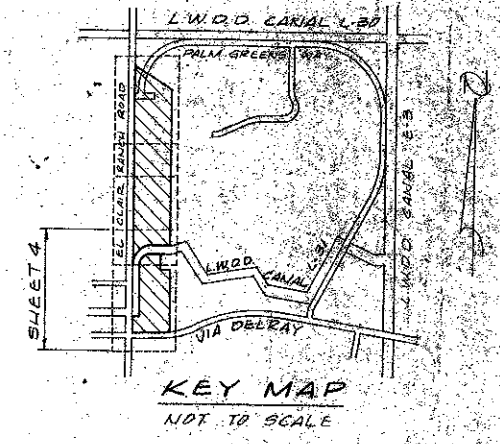


41-72

A PLANNED UNIT DEVELOPMENT  
**VILADEL RAY**  
 SECTION 15, 16, 17 AND 18  
 PALM BEACH COUNTY, FLORIDA  
 IN 4 SHEETS - SHEET NO. 4

72



0324300  
 Bldg. ARE APPROX  
 In location + shape

41/72

Field Book No. Pg.	<b>ROBERT E. OWEN &amp; ASSOCIATES, INC.</b> ENGINEERS · PLANNERS · SURVEYORS WEST PALM BEACH FLORIDA	A PLANNED UNIT DEVELOPMENT <b>VILADEL RAY</b> SECTION 15, 16, 17 AND 18 PALM BEACH COUNTY, FLORIDA	Job No. 80-1017
Design			Scale 1/4" = 40'
Drawn M. SIKORA			Date JUNE 1980
Checked			Sheet 4 of 4 File No. BP 2508