

41-76

76

BOYNTON WEST ROAD (S. R. 804)  
NORTH LINE SECTION 26

# A PLANNED UNIT DEVELOPMENT IN COUNTRY CLUB TRAIL PLAT NO. 5, CEDAR POINT SHEET 4 OF 7

REMAINING PORTION OF  
SUBDIVISION  
OF  
SECTION 26  
IN TWP. 45 S. OF RGE. 42 E.  
P.B. 6, P. 26

L.W.D.D. CANAL E-3

N-S & SECTION 26

EAST R/W LINE L.W.D.D. CANAL E-3

S. 1° 30' 30" W 941.82'

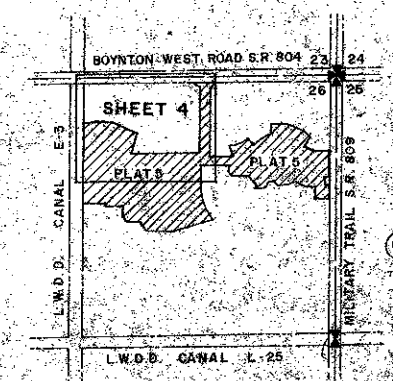
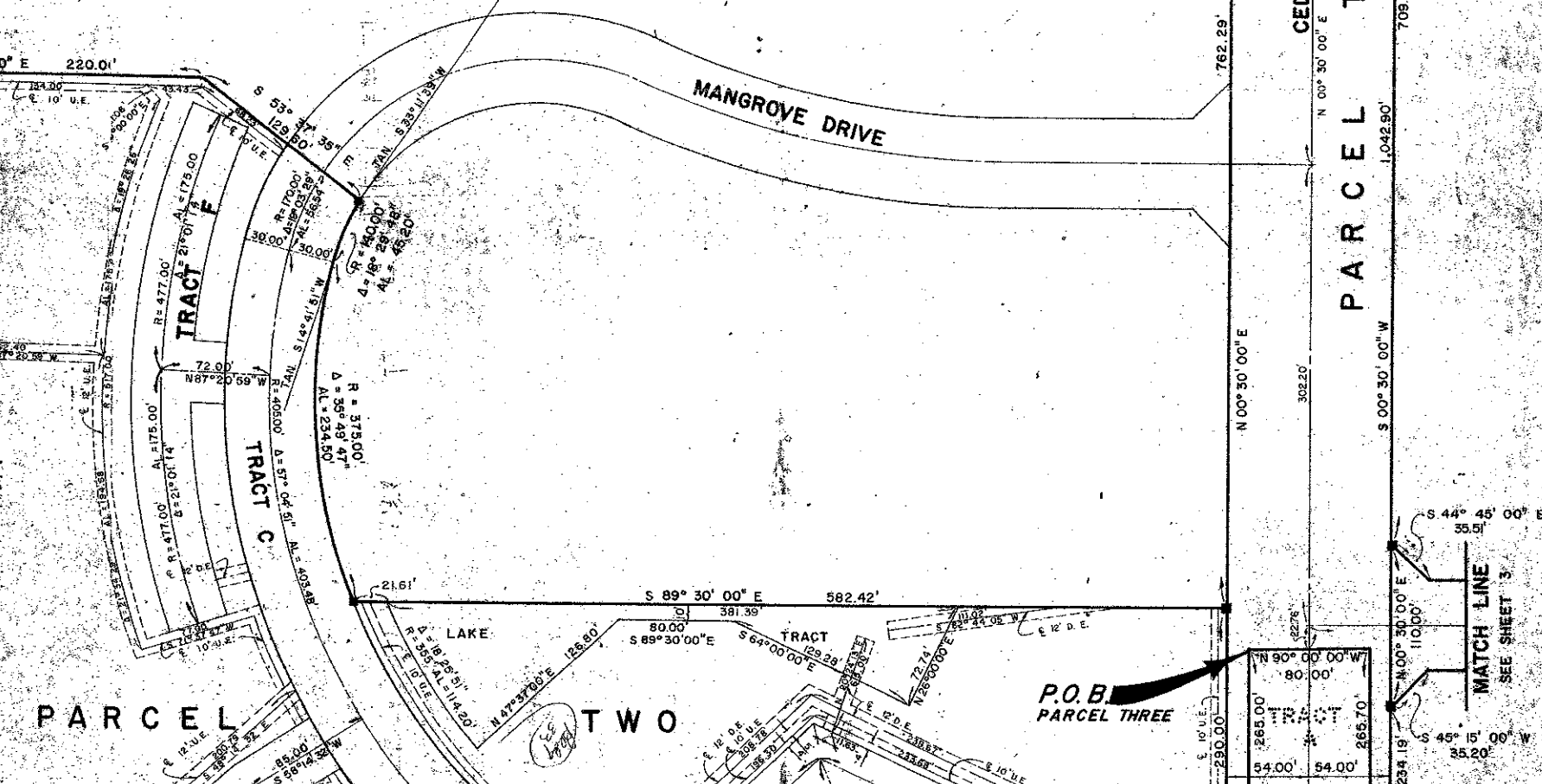
S. 1° 30' 30" W 941.82'

S. 1° 30' 30" W 941.82'

S. 1° 30' 30" W 941.82'

S. 1° 30' 30" W 941.82'

S. 1° 30' 30" W 941.82'



KEY MAP  
NOT TO SCALE



PARCEL TWO

P.O.B. PARCEL THREE

CEDAR POINT BOULEVARD  
PARCEL THREE

MATCH LINE  
SEE SHEET 5

MATCH LINE  
SEE SHEET 3

Field Book	
No.	Pg.
Design	
Drawn	
Checked	
W. C. LEEK	

ROBERT E. OWEN & ASSOCIATES, INC.  
ENGINEERS - PLANNERS - SURVEYORS  
WEST PALM BEACH  
FLORIDA

PLAT NO. 5  
of  
CEDAR POINT

Job No.	BO-1020
Scale	1" = 50'
Date	JUNE 1989
Sheet	4
of 7	
File No.	BF-23

4176 0226-301