

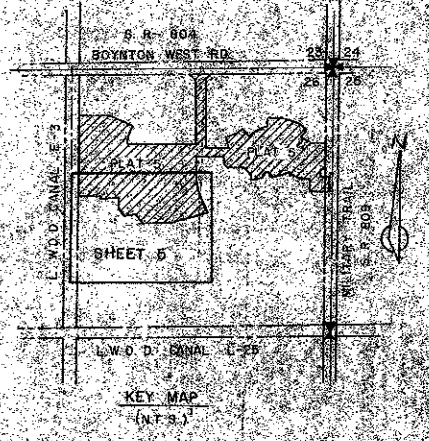
41-77

# A PLANNED UNIT DEVELOPMENT IN COUNTRY CLUB TRAIL PLAT NO. 5, CEDAR POINT

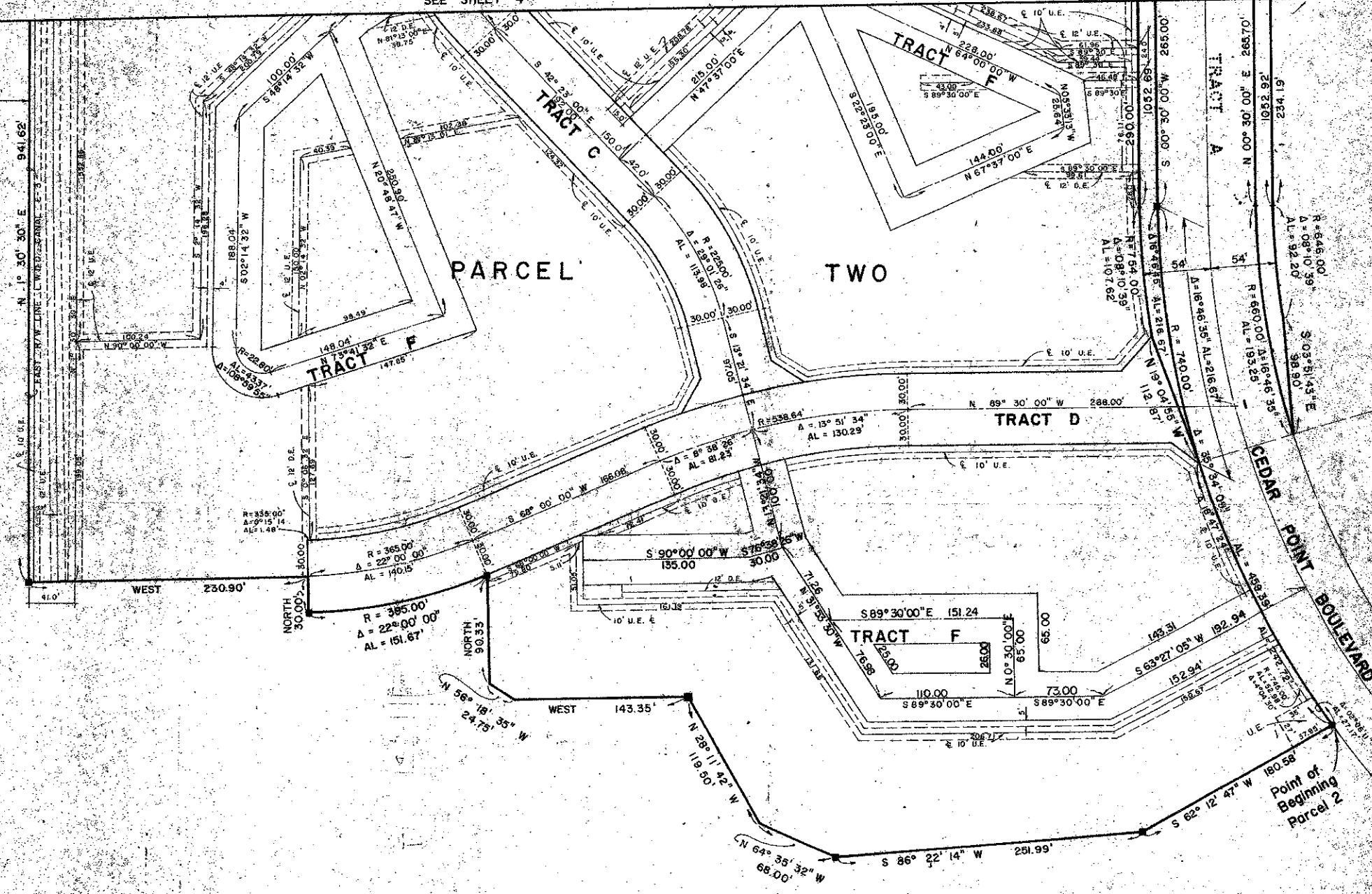
SHEET 5 OF 7

MATCH LINE  
SEE SHEET 4

77



N-S SECTION 26 L.W.D. CANAL E-3



REMAINING PORTION  
OF  
PLAT NO. 1, CEDAR POINT  
P.B. 30, P. 178 & 179

REMAINING PORTION  
OF  
PLAT NO. 1, CEDAR POINT  
P.B. 30, P. 178 & 179

Point of Beginning  
Parcel 2

0226-301



Field Book No. Pg.	<b>ROBERT E. OWEN &amp; ASSOCIATES, INC.</b> ENGINEERS PLANNERS SURVEYORS WEST PALM BEACH FLORIDA	<b>PLAT NO 5</b> of <b>CEDAR POINT</b>	No. 60, 1023
Design			DATE 1960
Drawn W.C. EEEK			5
Checked			BF-2314