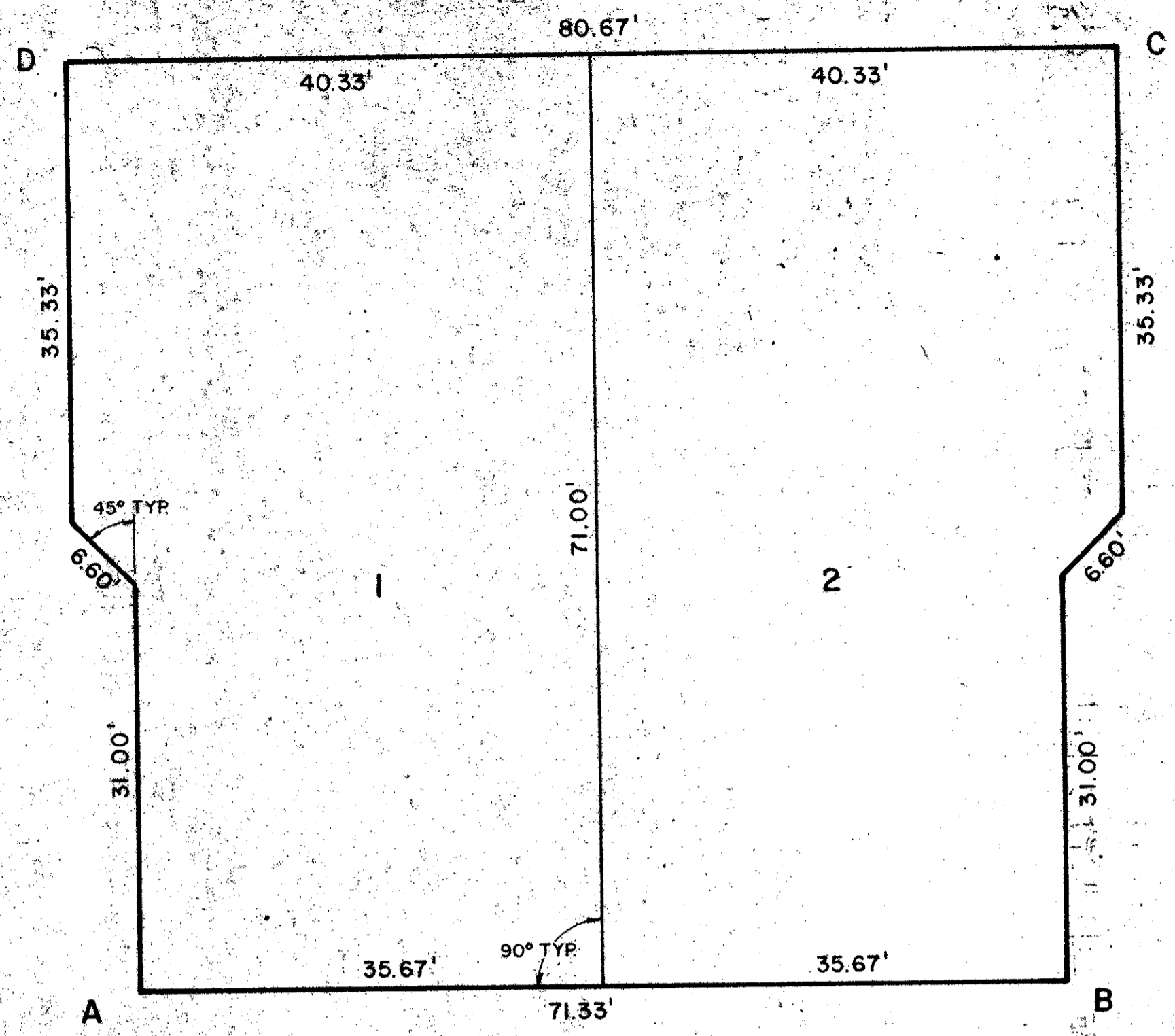


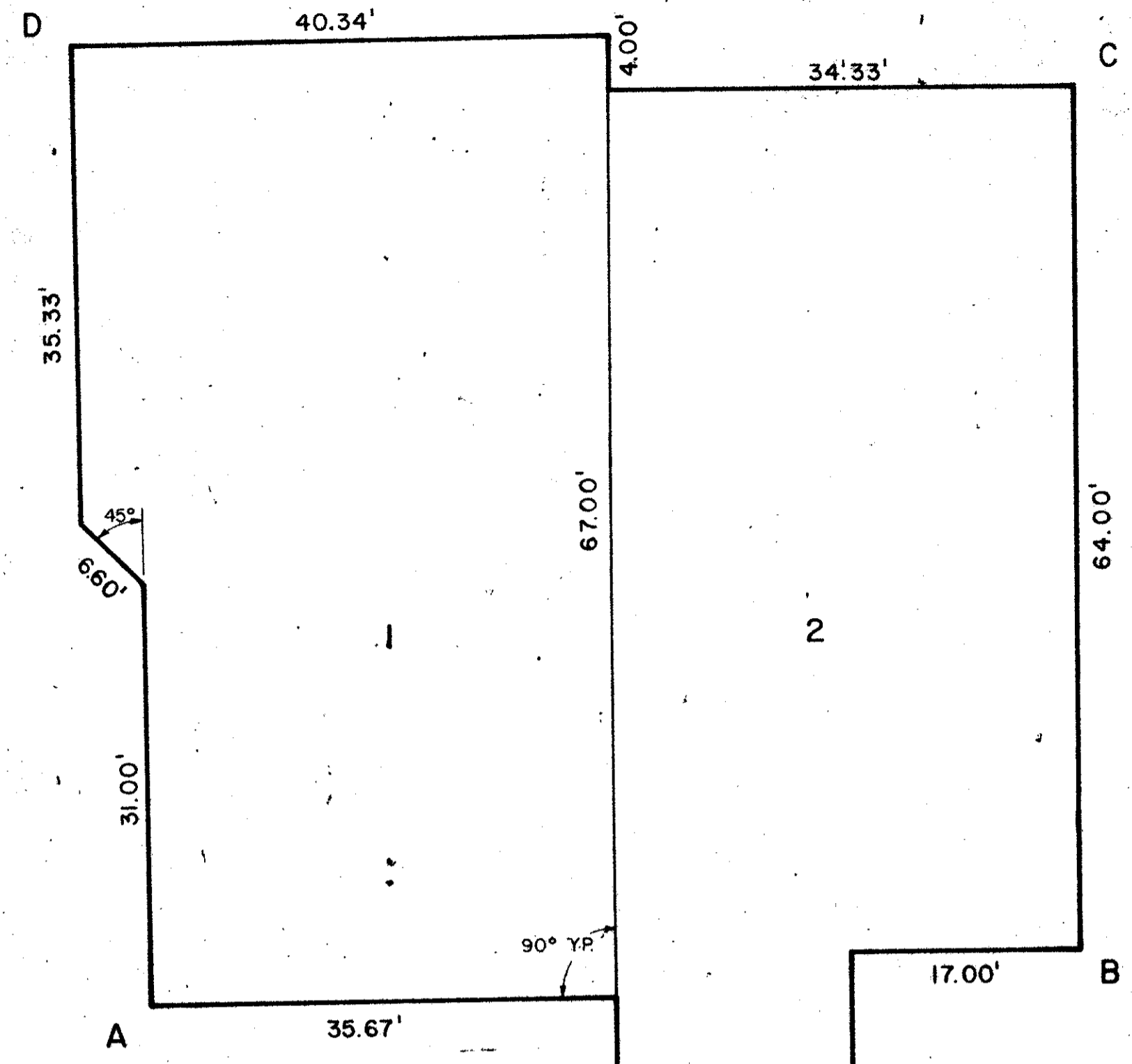
41-78

A PLANNED UNIT DEVELOPMENT IN COUNTRY CLUB TRAIL
PLAT NO. 5, CEDAR POINT
SHEET 6 OF 7

78

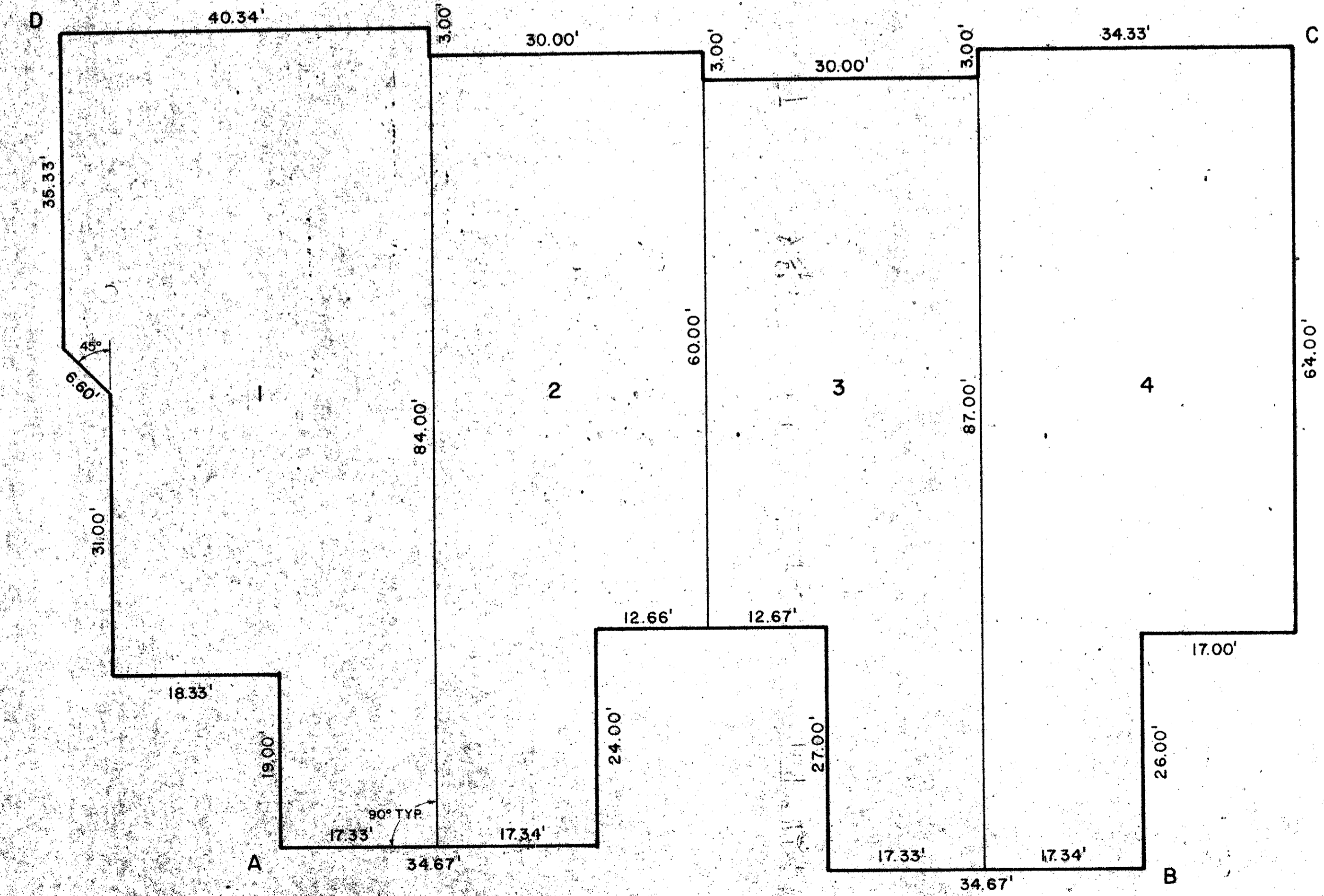
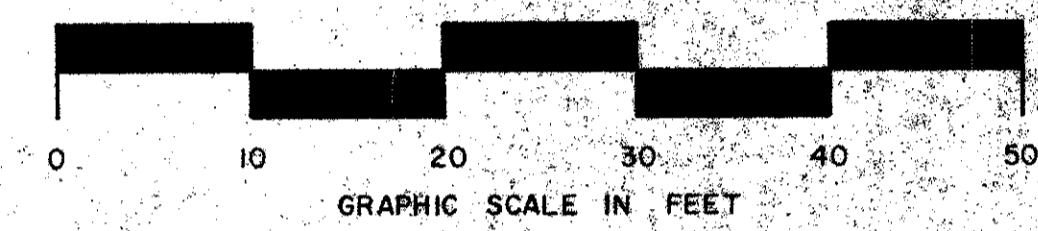


BLOCKS 1, 2, 3, 4, 6, 7, 9, 11, 13, 14,
20, 22, 23, 24, 25 & 26

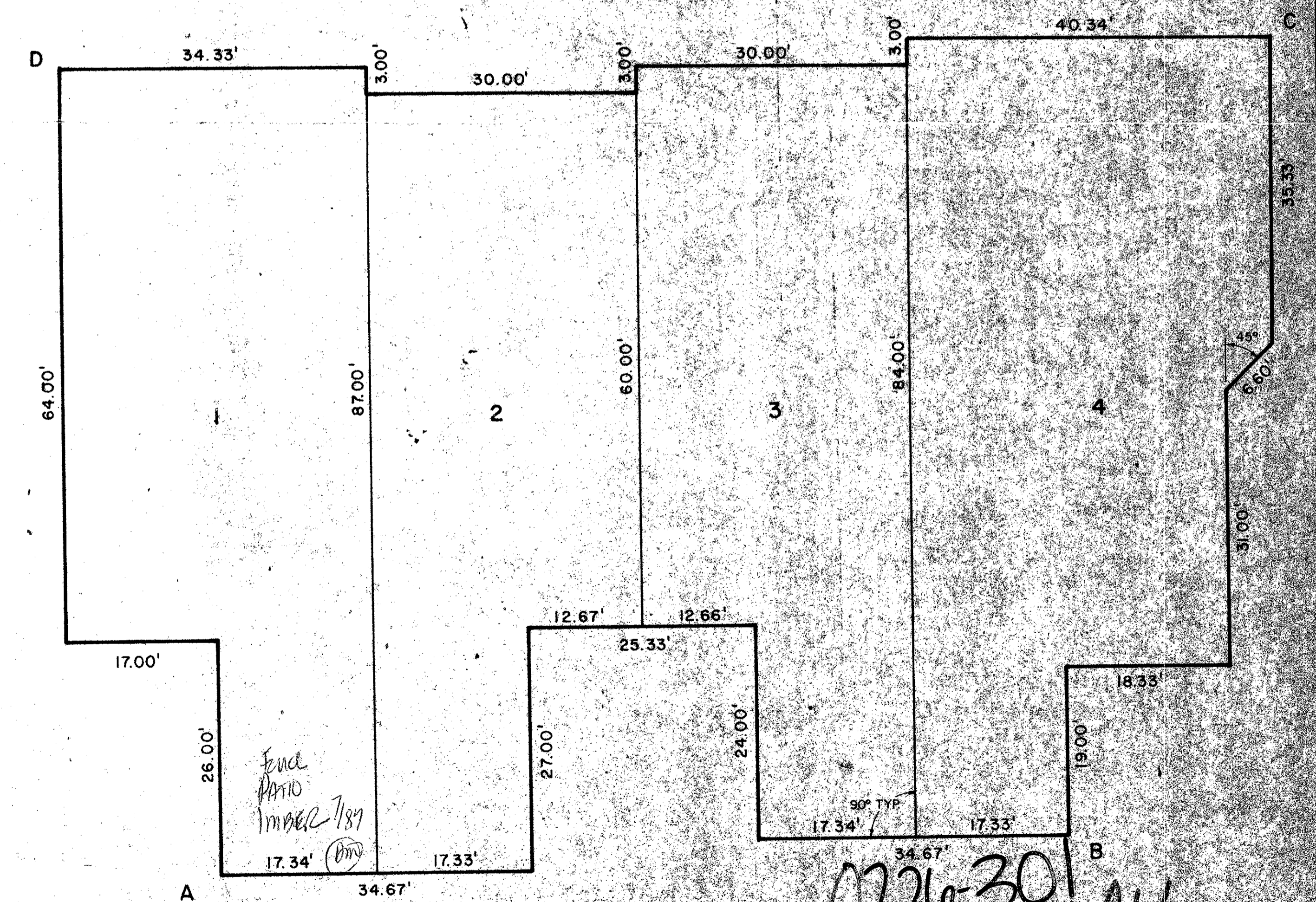


BLOCKS 10 & 12

NOTE: LETTERS A, B, C AND D REFER
TO BLOCK CORNER COORDINATES,
SEE SHEET 7.



BLOCKS 5, 8, 15, 16, 17 & 18



BLOCKS 19, 21, & 27

Field Book
No. Pg.
Design
Drawn
W. C. LEEK
Checked

ROBERT E. OWEN & ASSOCIATES, INC.
ENGINEERS - PLANNERS - SURVEYORS
WEST PALM BEACH
FLORIDA

PLAT NO. 5
of
CEDAR POINT

Job No. 80-1020
Scale 1" = 10'
Date JUNE 1980
Sheet 6
of 7
File No. BF-2314

0226-301
4/78