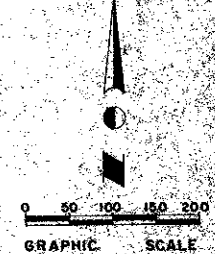
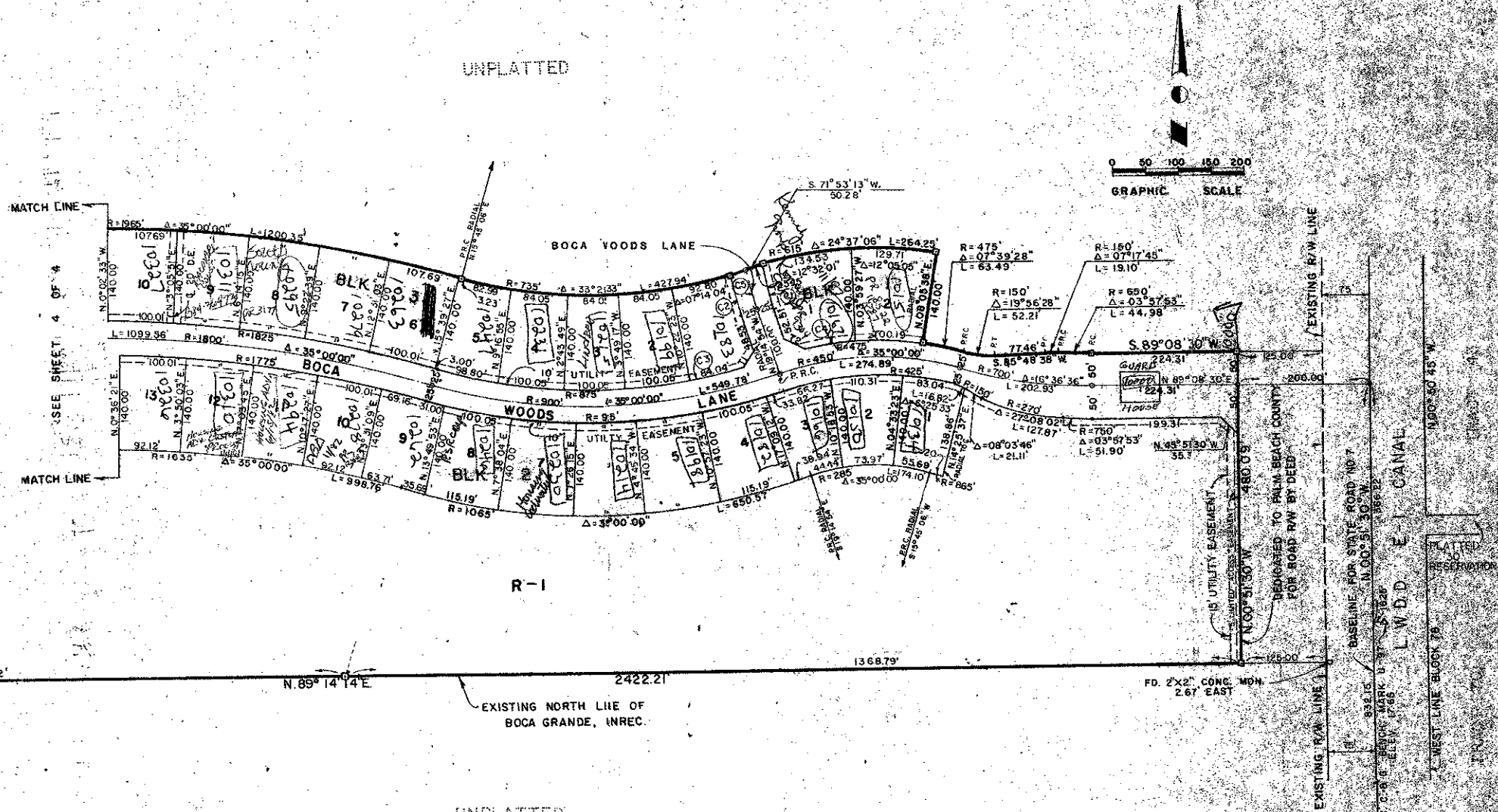


41-82

# BOCA WOODS COUNTRY CLUB

IN SECTIONS 23 AND 24, TOWNSHIP 47 SOUTH, RANGE 41 EAST,  
PALM BEACH COUNTY, FLORIDA  
PHASE 1

82



- T1 = 36.38' N. 27° 26' 16" E.
- T2 = 33.54' N. 61° 22' 44" W.
- (C1) R = 490.68' Δ = 07° 31' 50" L = 64.49'
- (C2) R = 540.68' Δ = 06° 56' 13" L = 65.46'
- (C3) R = 875' Δ = 05° 30' 11" L = 84.04'
- (C4) R = 475' Δ = 09° 31' 06" L = 78.91'
- (C5) R = 515.68' Δ = 07° 13' 09" L = 64.97'

0215-000 182

DATE: 11-11-11	BOCA WOODS COUNTRY CLUB PHASE 1
DRAWN BY: J. W. W.	RECORD PLAT
CHECKED BY: J. W. W.	FP 156
APPROVED BY: J. W. W.	SHEET 3
	4