

101-101

CURVE DATA				
NO.	LENGTH	Δ	TAN	RAD.
1	48.32	10°15'14"	74.26	270.00'
2	424.12	90°00'00"	270.00	270.00'
3	343.13	38°19'19"	178.64	500.00'
3-A	213.04	24°22'47"	108.16	500.00'
3-B	130.11	14°54'32"	64.42	500.00'
4	370.28	35°16'19"	192.76	549.53'
5	40.75	89°32'59"	25.88	26.08'
6	430.27	26°39'01"	228.06	584.71'
7	1134.22	11°32'54"	593.07	1728.68'
7-A	454.76	04°32'31"	227.49	5729.58'
7-B	699.47	06°59'41"	350.17	5729.58'
8	1179.96	11°36'27"	587.45	1779.58'
9	298.04	16°15'48"	150.03	1050.00'
10	297.70	16°42'37"	149.80	1080.00'
11	50.44	01°32'19"	25.22	1678.28'
12	238.99	07°17'25"	119.66	1678.28'
13	227.13	32°32'05"	116.72	400.00'
14	223.85	32°03'52"	114.94	400.00'
15	234.59	69°31'49"	148.78	150.00'
16	281.27	69°31'49"	176.53	180.00'

# Paddock Park No. 2 of Wellington

IN PART OF SECTIONS 5, 8 & 17, TWP 44S., RGE. 41E.

PALM BEACH COUNTY, FLORIDA

IN 3 SHEETS SHEET NO. 3

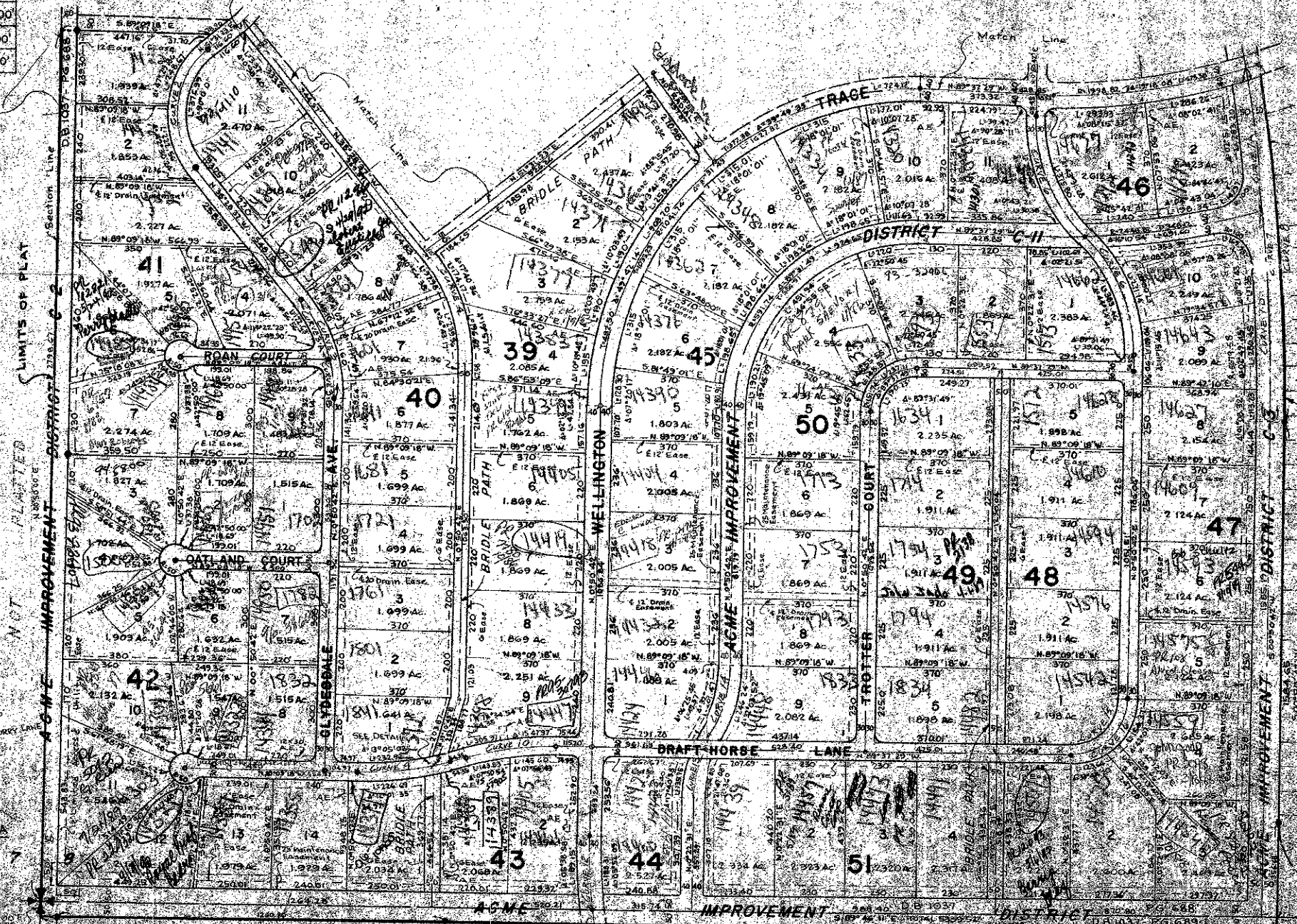
100 0 100 200 300 400 500 600 700 800 900

SCALE IN FEET  
 GEE & JENSON  
 ENGINEERS-ARCHITECTS-PLANNERS, INC.  
 WEST PALM BEACH, FLORIDA  
 MAY 1960

101



SHEET NO. 2



**NOTES**  
 All Block Corners are rounded with 2.25' radius curves unless otherwise shown.  
 All bearings shown hereon are relative to an assumed meridian used throughout Wellington.  
 Easements are for public utilities unless otherwise noted.

**NOTES**  
 ● denotes Permanent Reference Monument  
 ○ denotes Permanent Control Point  
 There shall be no buildings or other structures placed on Utility Easements.  
 There shall be no building or any kind of construction or the planting of trees or shrubs on Drainage Easements.  
 Building Setback Lines shall be as required by Palm Beach County Zoning Regulations.  
 E.E. denotes Easement Encumbrance

Paddock Park #2 Well  
 101  
 0832-336