

41-109

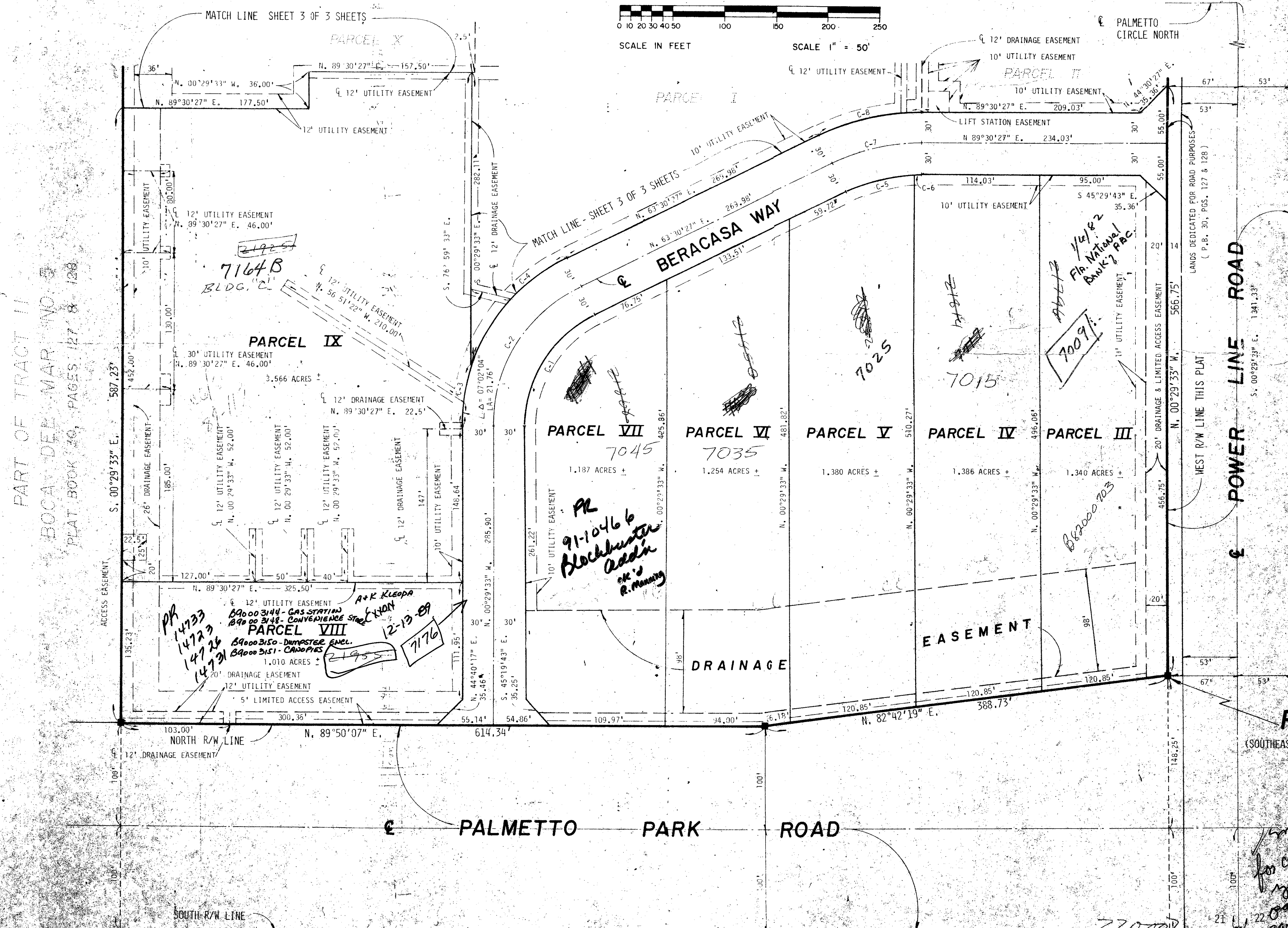
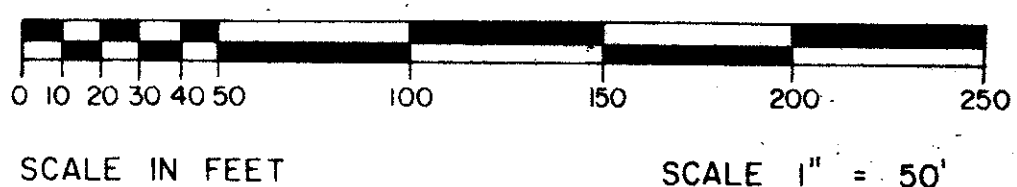
DEL MAR PLAZA SUB - DIVISION NO. 1

A REPLAT OF A PORTION OF TRACT II, BOCA DEL MAR NO. 5 RECORDED IN PLAT BOOK 30, PAGES 127 & 128, PUBLIC RECORDS OF PALM BEACH COUNTY, FLORIDA AND LYING IN SECTION 21, TOWNSHIP 47 SOUTH, RANGE 42 EAST PALM BEACH COUNTY, FLORIDA.

DATE: AUGUST 1980

SHEET 2 OF 3 SHEETS

109

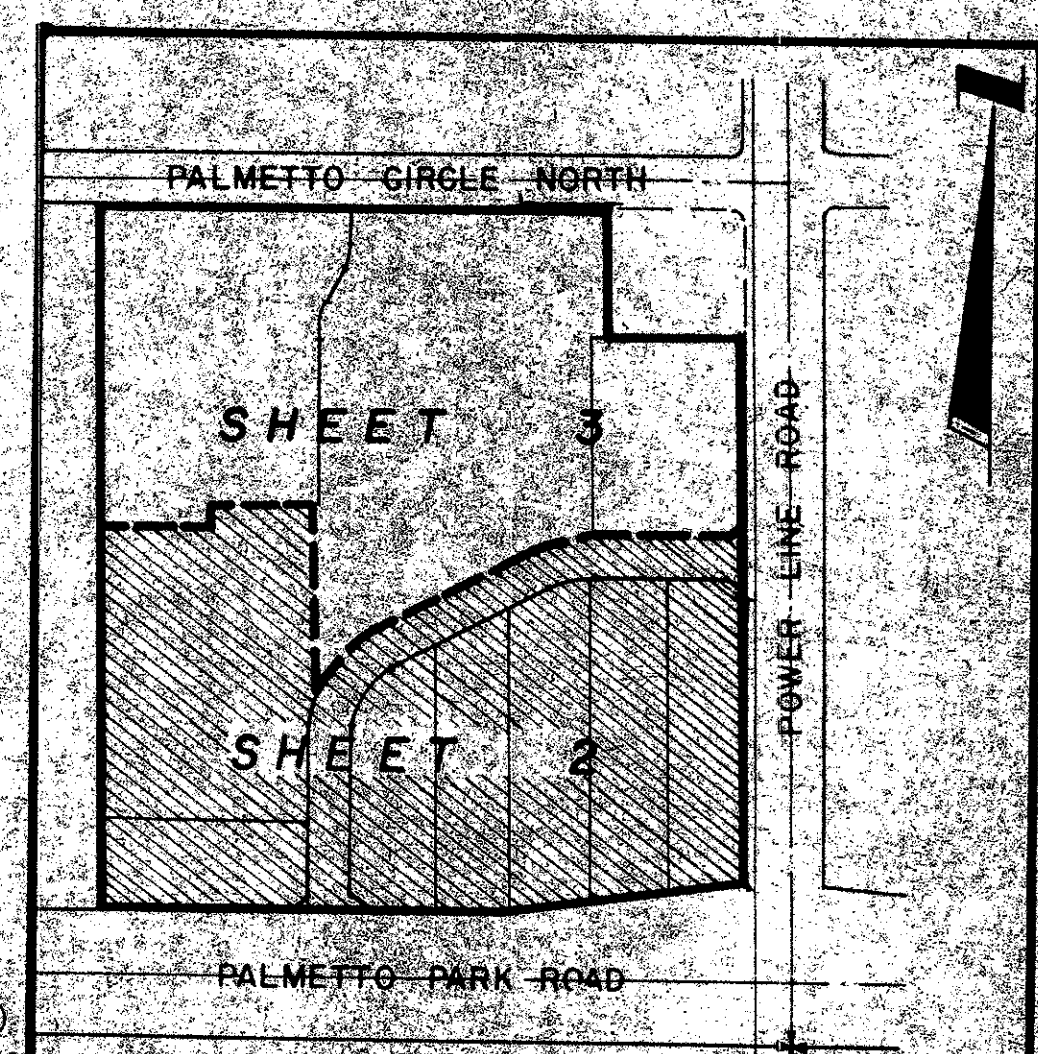


SURVEYOR'S NOTES

- DENOTES PERMANENT REFERENCE MONUMENTS (P.R.M.'S)
- DENOTES PERMANENT CONTROL POINTS (C.P.'S)
- BEARINGS SHOWN HEREON ARE REFERENCED TO THE BEARINGS SHOWN ON THE PLAT OF BOCA DEL MAR NO. 5
- THE 90 FOOT WIDE DRAINAGE EASEMENT AS SHOWN HEREON SHALL RUN WITH THE DEVELOPMENT AND SHALL NOT BE ABANDONED OR FILLED IN.

CURVE TABLE - "C" NO. 31

NO.	RADIUS	DELTA	ARC
1.	117.23'	64°00'00"	130.95'
2.	147.23'	64°00'00"	164.46'
3.	177.23'	64°00'00"	198.97'
4.	207.23'	64°00'00"	233.48'
5.	237.23'	64°00'00"	267.99'
6.	267.23'	64°00'00"	302.50'
7.	297.23'	64°00'00"	337.01'
8.	327.23'	64°00'00"	371.52'



PLAT SHEET INDEX MAP
SCALE 1" = 300'

P.O.B.
(SOUTHEAST CORNER TRACT II)

THIS INSTRUMENT WAS PREPARED BY MICHAEL F. SPERR OF DAILEY-FOTORNY, INC., 1028 SOUTH MILITARY TRAIL, WEST PALM BEACH, FLORIDA. 0205-312

Dailey-Fotorny, inc.
land surveyors, planners, engineers