

41-138

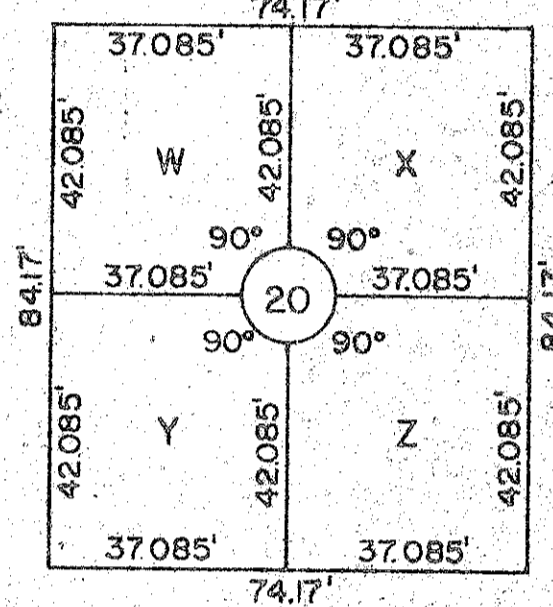
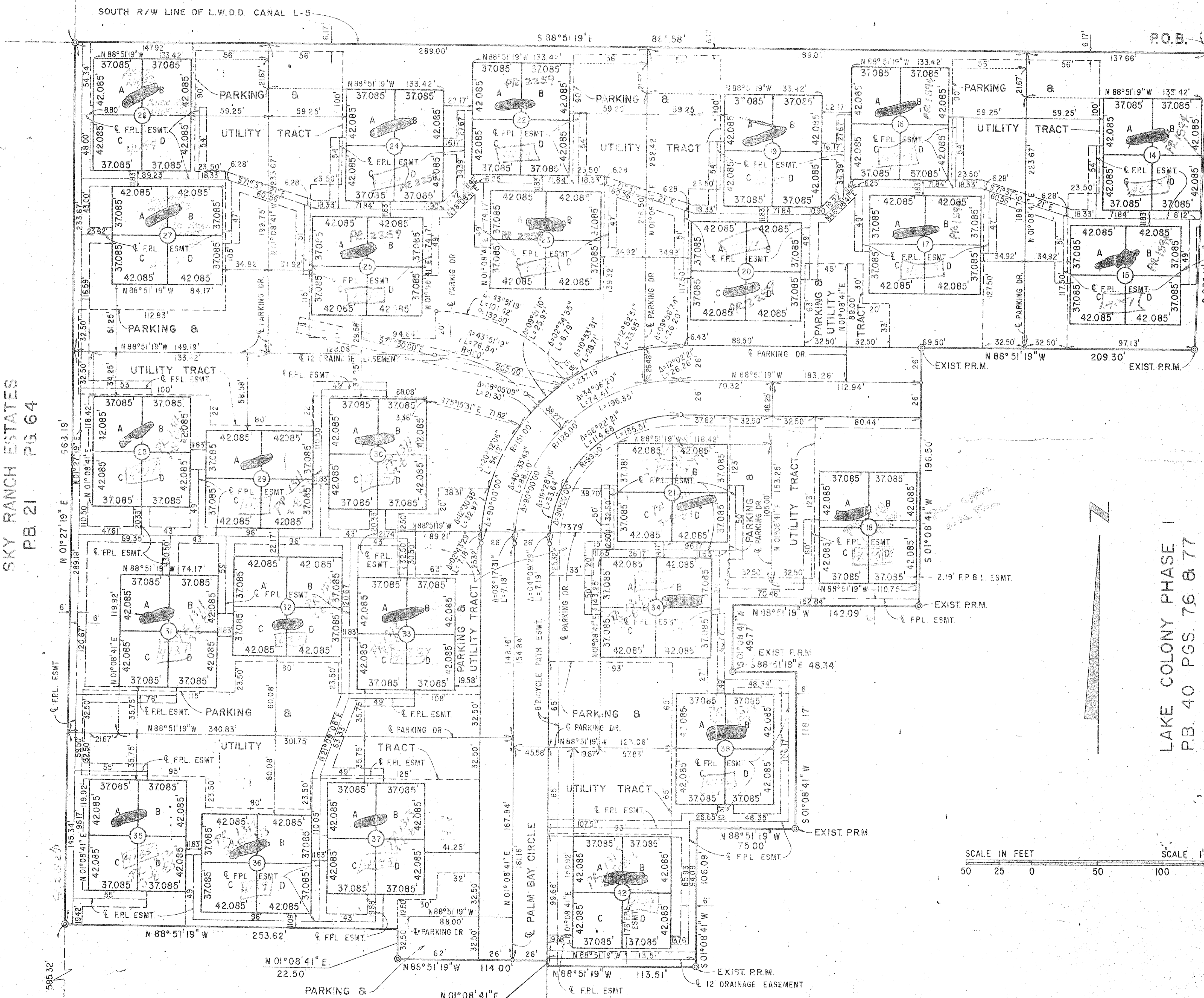
LAKE COLONY PHASE 2

A PORTION OF THE NORTHEAST 1/4 OF THE SOUTHEAST 1/4 OF SECTION 1,
TOWNSHIP 44 SOUTH, RANGE 42 EAST, PALM BEACH COUNTY, FLORIDA.

AUG 1980

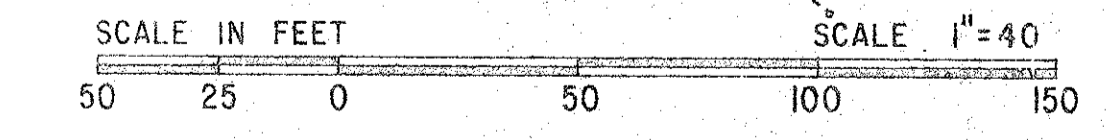
STATE OF FLORIDA
 COUNTY OF PALM BEACH
 This plat was filed for record at _____ M.
 this _____ Day of _____, AD 1981,
 and duly recorded in Plat Book No. _____
 on Pages _____ thru _____
 JOHN B. DUNKLE, Clerk
 Circuit Court
 BY: _____ D.C.

158



TYPICAL BLOCK DETAIL
SCALE 1"=30'

- SURVEYOR'S NOTES:**
1. ALL LOTS ARE AT RIGHT ANGLES TO THE CENTERLINE OF THE PROPOSED PRIVATE PARKING DRIVE, AS SHOWN, UNLESS OTHERWISE INDICATED.
 2. ALL LOTS ARE 37.085 FEET BY 42.085 FEET, AND ARE RECTANGULAR IN SHAPE
 3. ALL PARKING TRACT DIMENSIONS TO BE PARALLEL OR PERPENDICULAR TO PARKING DRIVE UNLESS OTHERWISE SHOWN.
 4. ALL FPL CO. EASEMENTS TO BE PARALLEL OR PERPENDICULAR TO LOTS UNLESS OTHERWISE SHOWN
 5. ALL FPL CO. EASEMENTS TO BE 12' WIDE UNLESS OTHERWISE SHOWN



SKY RANCH ESTATES
P.B. 21 PG. 64

LAKE COLONY PHASE 1
P.B. 40 PGS. 76 & 77

NOT PLATTED

LAKE COLONY PHASE 1
P.B. 40 PGS. 76 & 77

Handwritten notes:
 Lake Colony Ph. 2
 11/158
 0264-002