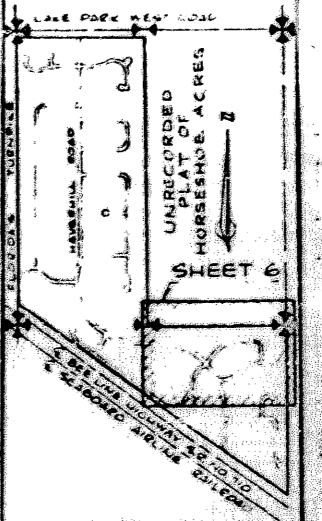
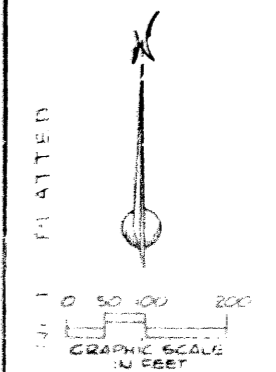
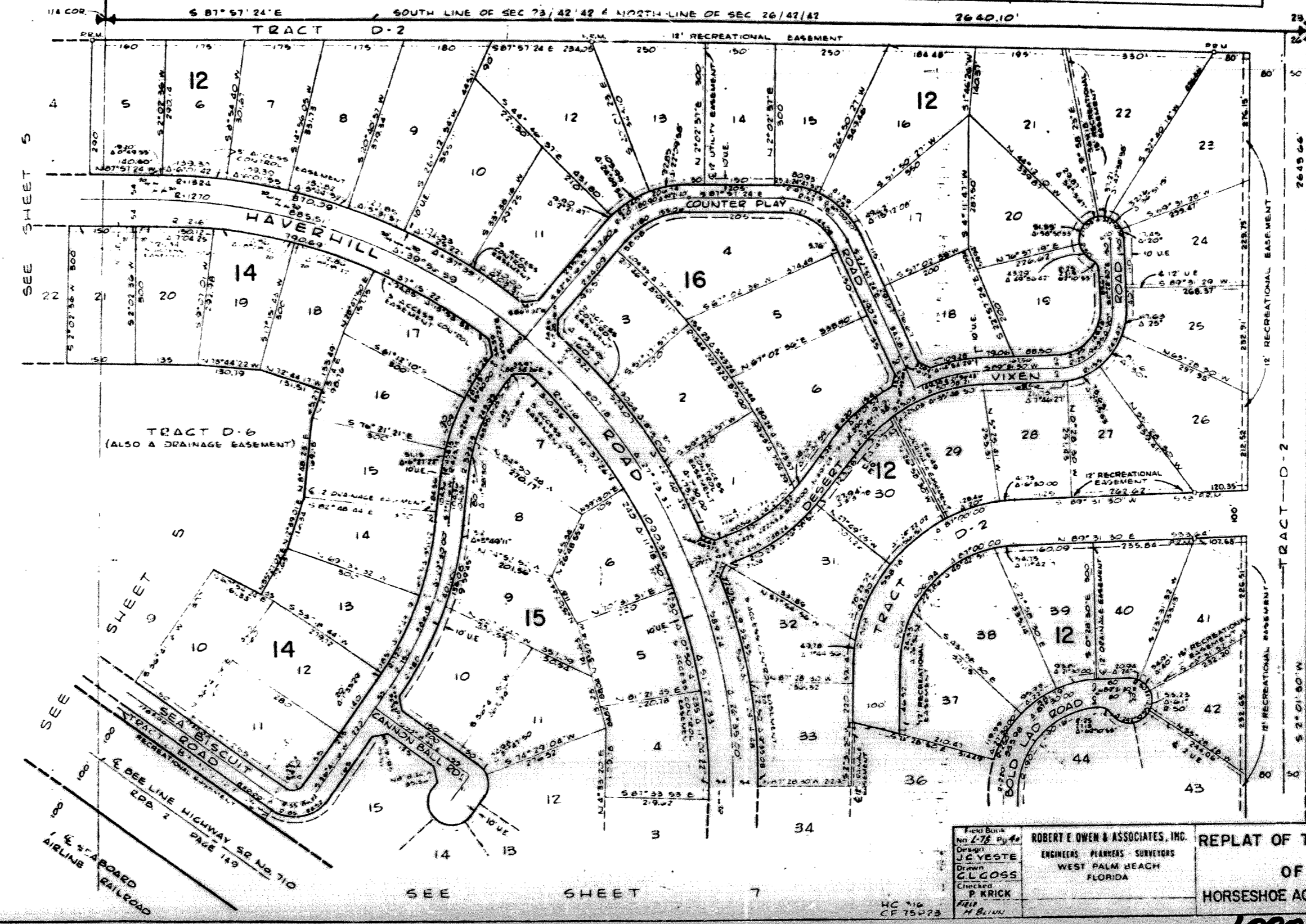


A PLANNED UNIT DEVELOPMENT
REPLAT OF THE PLAT OF HORSESHOE ACRES WEST
 IN 7 SHEETS-SHEET 6 OF 7

41 198
198

UNRECORDED PLAT OF HORSESHOE ACRES



12623

Field Book No. 2-78	ROBERT E. OWEN & ASSOCIATES, INC. ENGINEERS-PLANNERS-SURVEYORS WEST PALM BEACH FLORIDA	REPLAT OF THE PLAT OF HORSESHOE ACRES WEST	Date: FEB. 1961 Scale: 1"=100' Sheet: 6 of 7 Plat No.: DF-2253-A
Design: J. C. VESTE	Checked: P. KRICK		
Drawn: G. L. GOSS			
HC No. CF 75023			

1000-07