

42/20

AMERICAN HOMES AT BOCA RATON

PLAT NO. 4A

SHEET 2 OF 2 SHEETS

WEIMER AND COMPANY
INCORPORATED

planners • land surveyors • engineers
land development consultants

20

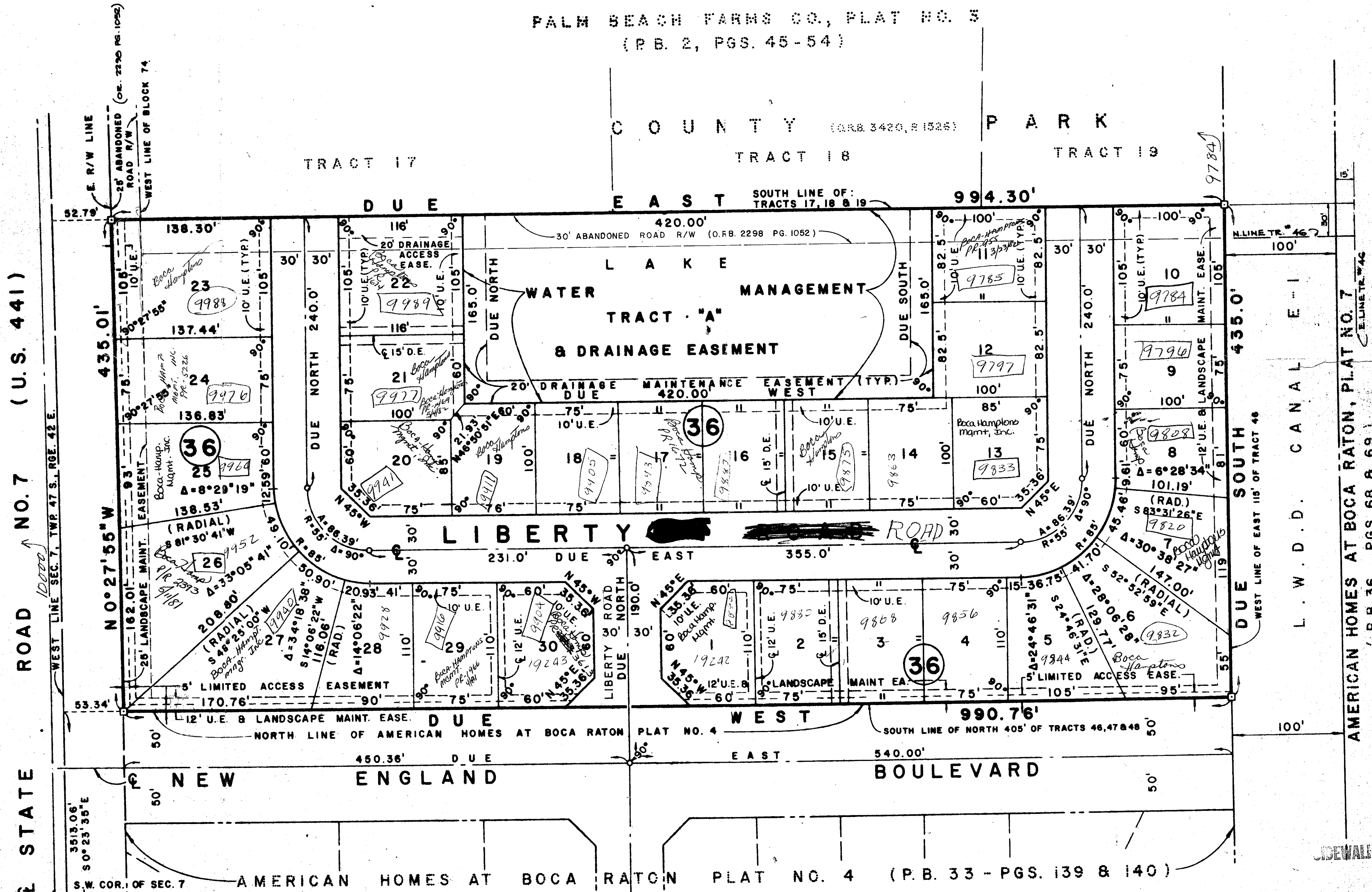
PALM BEACH FARMS CO., PLAT NO. 5
(P.B. 2, PGS. 45-54)

C O U N T Y (O.R.B. 3420, P.1525) P A R K

TRACT 17

TRACT 18

TRACT 19



TURNOUT REQUIRED

SIDEWALK REQUIRED

SIDEWALK REQUIRED

0194-303

THIS INSTRUMENT WAS PREPARED BY ROLF ERNST WEIMER
IN THE OFFICE OF WEIMER AND COMPANY, INC.,
2506 FOREST HILL BOULEVARD, WEST PALM BEACH, FL 33406

American Homes at Boca Raton 4A