

42/38

CURVE DATA

CURVE NO.	ARC	CENTRAL ANGLE	RADIUS
C-1	138.28'	10°-30'-00"	780.00'
C-2	80.11'	10°-00'-00"	45.00'
C-3	39.40'	10°-00'-00"	30.00'
C-4	38.03'	10°-00'-00"	30.00'
C-5	38.03'	10°-52'-06"	425.00'
C-6	26.92'	29°-39'-04"	625.00'
C-7	68.96'	6°-24'-40"	625.00'
C-8	18.24'	10°-47'-14"	585.30'
C-9	46.38'	6°-46'-09"	685.00'
C-10	55.95'	6°-12'-57"	608.00'
C-11	62.34'	6°-36'-09"	615.00'
C-12	26.35'	6°-23'-12"	615.00'
C-13	36.49'	5°-23'-56"	615.00'
C-14	19.08'	10°-40'-28"	615.00'
C-15	27.25'	20°-19'-53"	585.00'
C-16	46.35'	40°-35'-47"	585.00'
C-17	17.78'	10°-44'-29"	585.00'
C-18	67.83'	6°-36'-09"	585.00'
C-19	30.26'	6°-35'-09"	600.00'
C-20	24.99'	6°-23'-12"	600.00'
C-21	34.44'	6°-12'-57"	615.00'
C-22	72.36'	6°-36'-09"	615.00'
C-23	57.89'	5°-23'-37"	615.00'
C-24	43.18'	4°-18'-09"	575.00'
C-25	99.12'	14°-32'-03"	600.00'
C-26	10.64'	70°-48'-00"	30.00'
C-27	51.26'	70°-00'-00"	45.00'
C-28	17.03'	6°-49'-12"	1190.00'
C-29	141.64'	6°-48'-53"	1190.00'
C-30	396.41'	12°-05'-12"	1190.00'
C-31	71.44'	18°-21'-47"	285.00'
C-32	75.20'	18°-21'-47"	300.00'
C-33	75.20'	18°-21'-47"	315.00'
C-34	50.01'	20°-24'-29"	1190.00'
C-35	45.39'	20°-21'-31"	1190.00'

A PORTION OF A P.U.D.

ALPHA AT INDIAN SPRING

BEING A REPLAT OF TRACT "A", INDIAN SPRING PLAT NO. 3, AS RECORDED IN PLAT BOOK 41, PAGES 6 THROUGH 8, PUBLIC RECORDS, PALM BEACH COUNTY, FLORIDA LYING IN SECTION 34, TOWNSHIP 45 SOUTH, RANGE 42 EAST, PALM BEACH COUNTY, FLORIDA

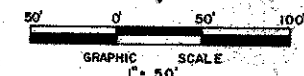
JANUAR, 1981

TRACT C-1 INDIAN SPRING PLAT NO. 3
P.B. 41, PGS. 6 THRU 8

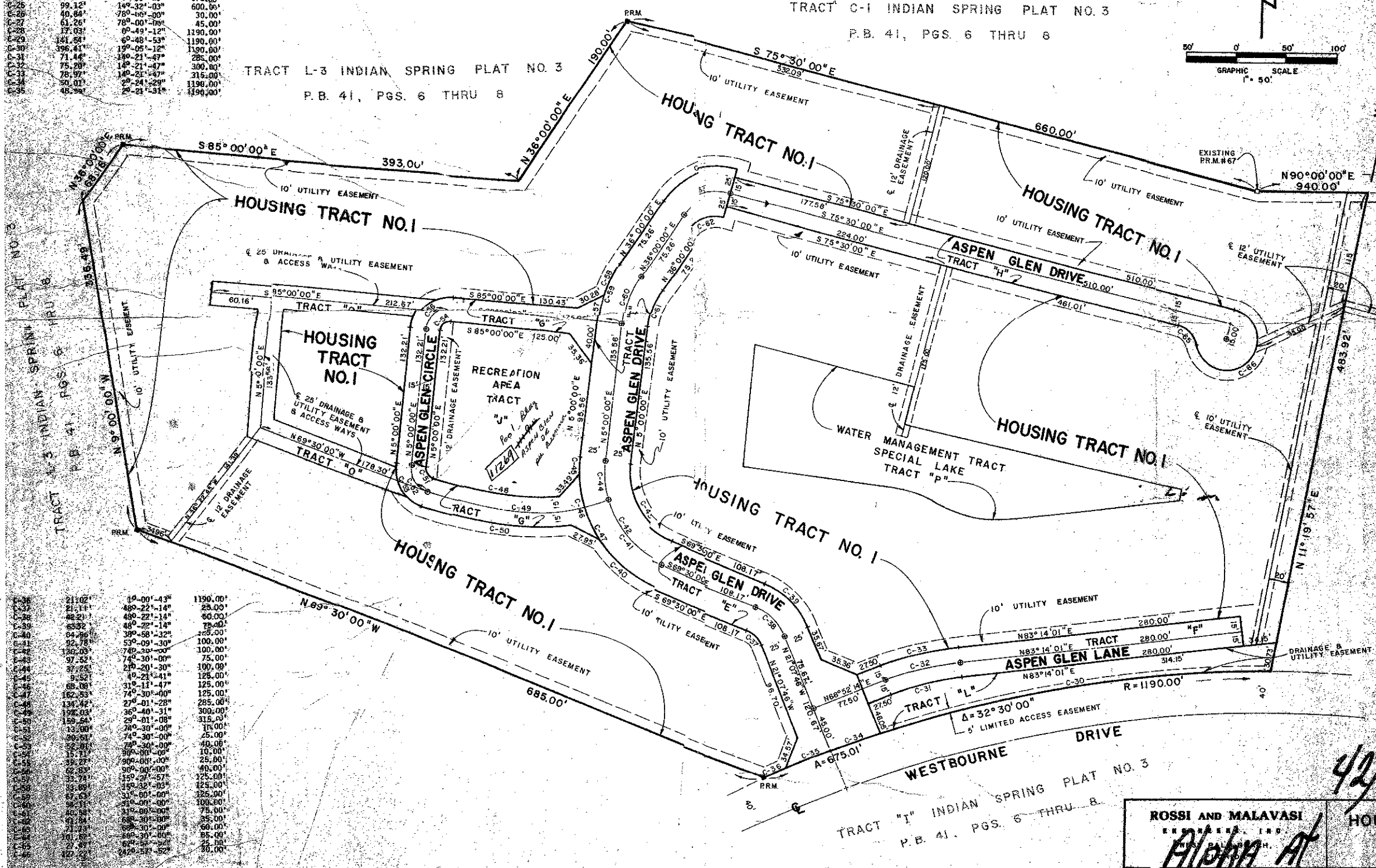
TRACT L-3 INDIAN SPRING PLAT NO. 3
P.B. 41, PGS. 6 THRU 8

38

STATE OF FLORIDA
COUNTY OF PALM BEACH
This plat was filed for record by _____
on _____
19____ and duly recorded in Plat Book No. _____
on page _____
JOHN B. DUNKLE, Clerk Circuit Court
By _____ D.C.



MATCH LINE
SEE SHEET 2 OF 3



0259-001

42/38

TRACT "I" INDIAN SPRING PLAT NO. 3
P.B. 41, PGS. 6 THRU 8

ROSSI AND MALAVASI
ENGINEERS, INC.
ALPHA AT

HOUSING TRACT "A"
INDIAN SPRING

Date: JANUARY, 1981
Designed: _____
Drawn: C. GOSS
Scale: 1" = 50'
Job No.: 2157-80