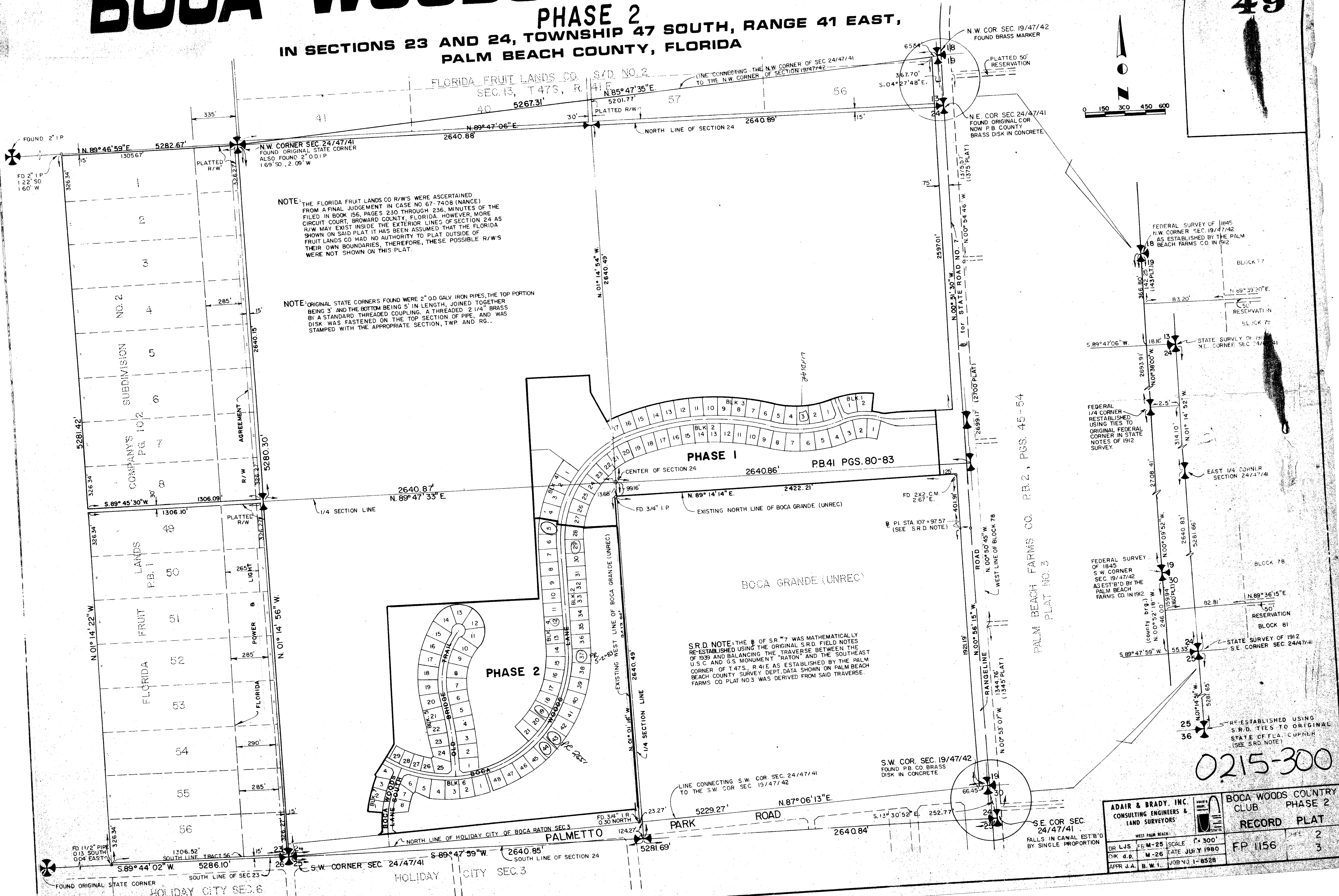


BOCA WOODS COUNTRY CLUB

PHASE 2
 IN SECTIONS 23 AND 24, TOWNSHIP 47 SOUTH, RANGE 41 EAST,
 PALM BEACH COUNTY, FLORIDA

49

42/49



NOTE: THE FLORIDA FRUIT LANDS CO R/W'S WERE ASCERTAINED FROM A FINAL JUDGEMENT IN CASE NO 57-7408 (NANCE) FILED IN BOOK 156, PAGE 5230 THROUGH 236, MINUTES OF THE CIRCUIT COURT, BROWARD COUNTY, FLORIDA. HOWEVER, MORE R/W MAY EXIST INSIDE THE EXTERIOR LINES OF SECTION 24 AS SHOWN ON SAID PLAT IT HAS BEEN ASSUMED THAT THE FLORIDA FRUIT LANDS CO HAD NO AUTHORITY TO PLAT OUTSIDE OF THEIR OWN BOUNDARIES, THEREFORE, THESE POSSIBLE R/W'S WERE NOT SHOWN ON THIS PLAT.

NOTE: ORIGINAL STATE CORNERS FOUND WERE 2" O.D. GALV. IRON PIPES, THE TOP PORTION BEING 3" AND THE BOTTOM BEING 5" IN LENGTH, JOINED TOGETHER BY A STANDARD THREADED COUPLING. A THREADED 2 1/4" BRASS DISK WAS FASTENED ON THE TOP SECTION OF PIPE, AND WAS STAMPED WITH THE APPROPRIATE SECTION, TWP. AND RG..

S.R.D. NOTE: THE # OF S.R.#7 WAS MATHEMATICALLY RE-ESTABLISHED USING THE ORIGINAL S.R.D. FIELD NOTES OF 1899 AND BALANCING THE TRAVERSE BETWEEN THE SOUTHEAST CORNER OF T.47S. R.41E AS ESTABLISHED BY THE PALM BEACH COUNTY SURVEY DEPT. DATA SHOWN ON PALM BEACH FARMS CO PLAT NO.3 WAS DERIVED FROM SAID TRAVERSE.

0215-300

ADAIR & BRADY, INC. CONSULTING ENGINEERS & LAND SURVEYORS		BOCA WOODS COUNTRY CLUB PHASE 2 RECORD PLAT	
WEST PALM BEACH	SCALE 1" = 300'	DATE	JULY 1980
DR LJS	EG M-25	DATE	JULY 1980
CHK d.p.	M-26	DATE	JULY 1980
APPR J.A. B.W.1.	JOB NO 1-8528	FILE	2
FALLS IN CANAL EST'D BY SINGLE PROPORTION			3