

42/55

# PLAT OF LAKE MANGO SHORES P.U.D.

BEING IN SECTION 8, TOWNSHIP 44 SOUTH, RANGE 43 EAST, PALM BEACH COUNTY, FLA.

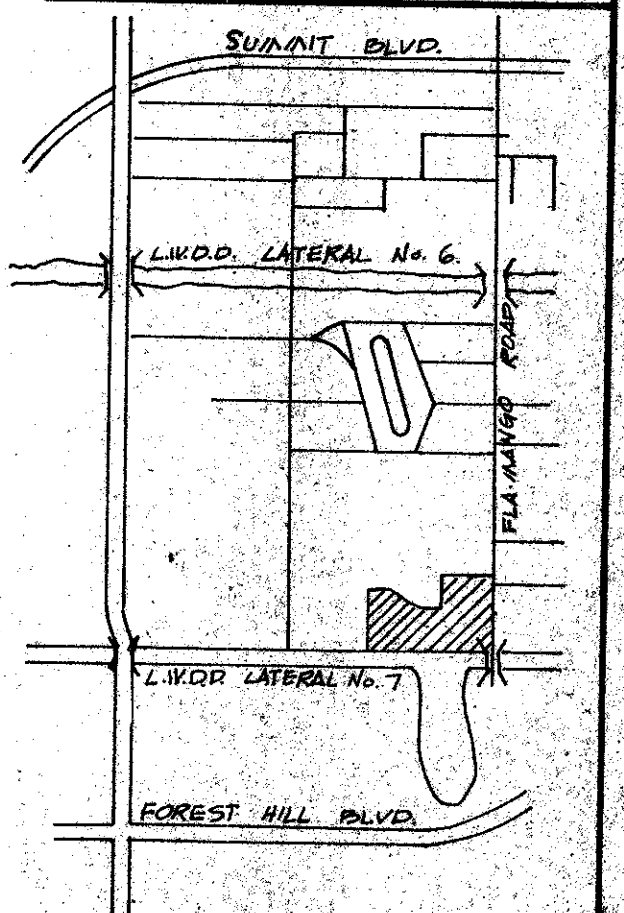
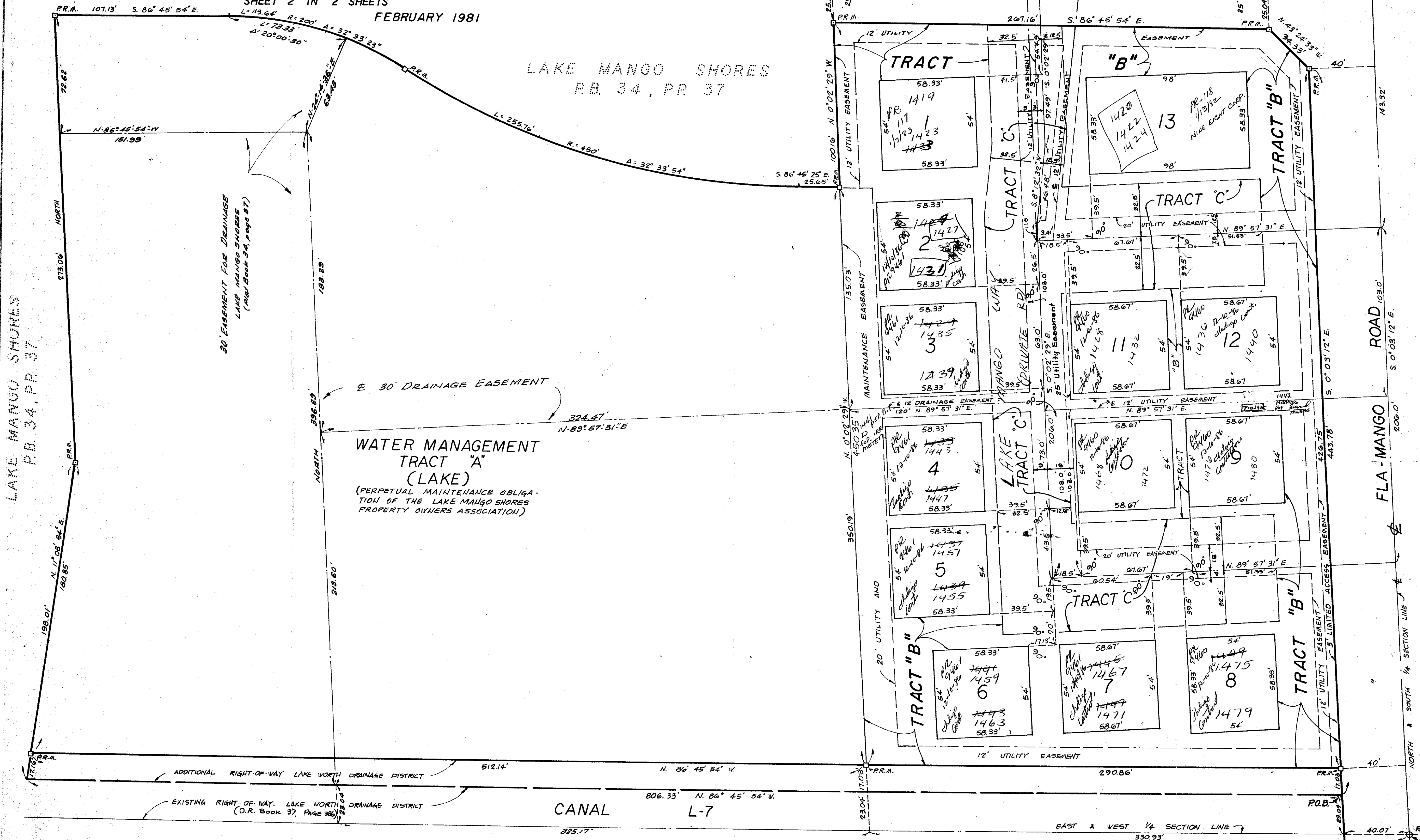
SHEET 2 IN 2 SHEETS

FEBRUARY 1981

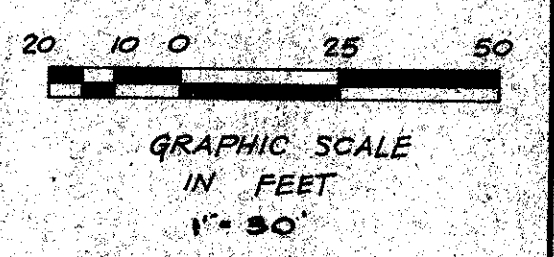
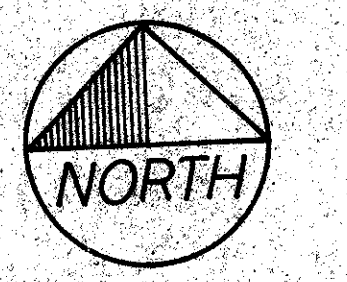
LAKE MANGO SHORES P.B. 34, P.P. 37

UNPLATTED

55



LOCATION MAP SCALE: 1" = 1/4 MILE



THIS INSTRUMENT PREPARED BY:  
 ANTHONY J. ANCHUDA  
 2829 OKEECHOBEE BOULEVARD  
 WEST PALM BEACH, FLORIDA  
 DRAWN BY ALLEN STOREY

Sheet # 4  
 Quad 17  
 FSZ 19  
 Flad # B  
 CENTER OF SECTION 8  
 2144143  
 R.S./P.U.D.

42/55  
 1000-020

PROPERTY DEVELOPMENT DATA	
TOTAL ACREAGE	7.808 Ac±
TOTAL NO. OF BLDGS.	13
NO. OF UNITS PER BLDG.	12x2 & 1x3
TOTAL NO. OF UNITS	27
NO. OF UNITS PER ACRE	3.46 DU/AC
% BLDG. COVERAGE	8.85%
NO. PARKING SPACES REQ'D (27 x 2)	54
NO. PARKING SPACES PROVIDED	54
% ROADS AND PARKING AREA	7.59%
% OPEN SPACE	83.66%
OPEN SPACE ACREAGE	6.52 Ac±

JAMES D. CARLTON, INC.  
 ENGINEERS • LAND SURVEYORS  
 2829 OKEECHOBEE BLVD • WEST PALM BEACH, FLA

LAKE MANGO SHORES P.B. 34, P.P. 37

30' EASEMENT FOR DRAINAGE LAKE MANGO SHORES (P.B. Book 34, page 37)

WATER MANAGEMENT TRACT "A" (LAKE)  
 (PERPETUAL MAINTENANCE OBLIGATION OF THE LAKE MANGO SHORES PROPERTY OWNERS ASSOCIATION)

CANAL L-7

PRAIRIE PARK P.B. 24 P.P. 43