

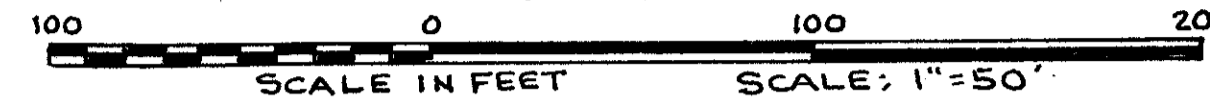
42/77

TOWN PLACE, PHASE I OF VIA VERDE - P.U.D.

IN PART OF SECTION 23, TWP. 47 S., RGE. 42 E.

PALM BEACH COUNTY, FLORIDA
IN 3 SHEETS SHEET NO. 2

GEE & JENSON
ENGINEERS-ARCHITECTS-PLANNERS, INC.
WEST PALM BEACH, FLORIDA
AUGUST 1980

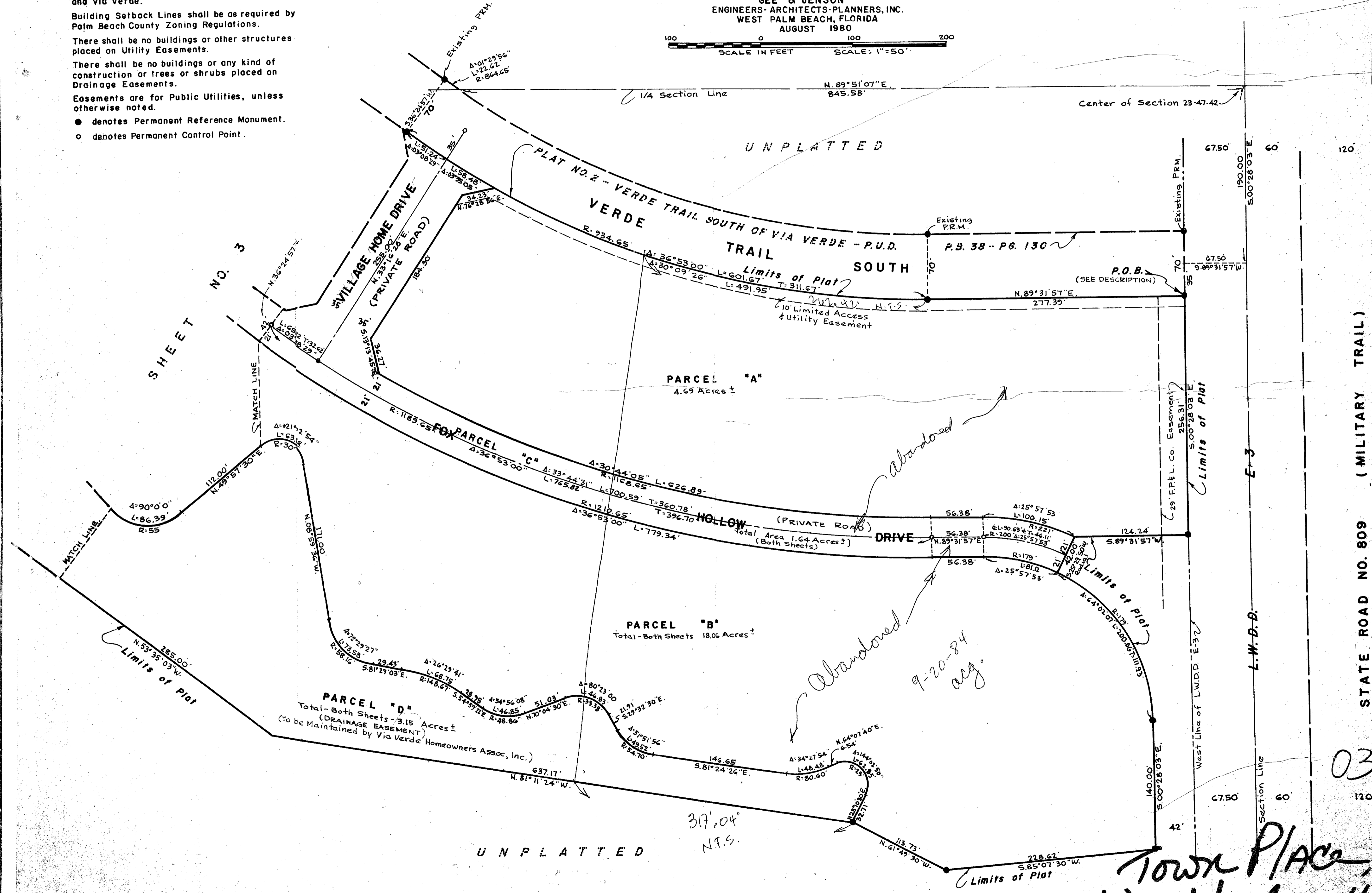


77

NOTES

- All bearings shown hereon are relative to an assumed meridian used throughout Boca West and Via Verde.
- Building Setback Lines shall be as required by Palm Beach County Zoning Regulations.
- There shall be no buildings or other structures placed on Utility Easements.
- There shall be no buildings or any kind of construction or trees or shrubs placed on Drainage Easements.
- Easements are for Public Utilities, unless otherwise noted.
- denotes Permanent Reference Monument.
- denotes Permanent Control Point.

STATE OF FLORIDA
COUNTY OF PALM BEACH
This Plat was filed for record at _____ M.
this _____ day of _____, 1981,
and duly recorded in Plat Book No. _____
on page _____
JOHN B. DUNKLE, Clerk Circuit Court
By _____, D.C.



0323-304

Town Place, Ph. I
Via Verde 42/77