

42/79

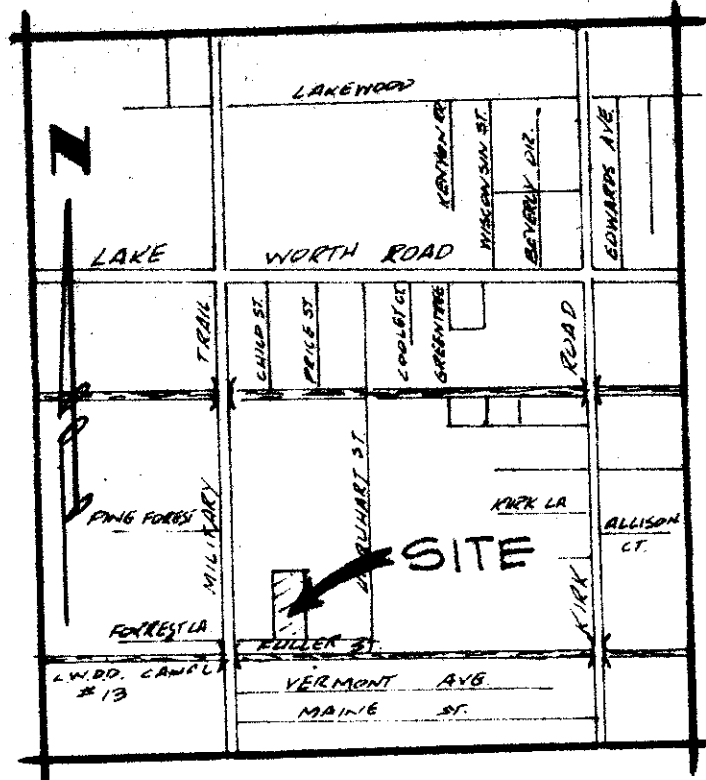
79

PLAT OF HIDDEN HOLLOW

BEING IN SECTION 25, TOWNSHIP 44 S, RANGE 42 E
PALM BEACH COUNTY, FLORIDA

MARCH 1981
SHEET 2 IN 2 SHEETS

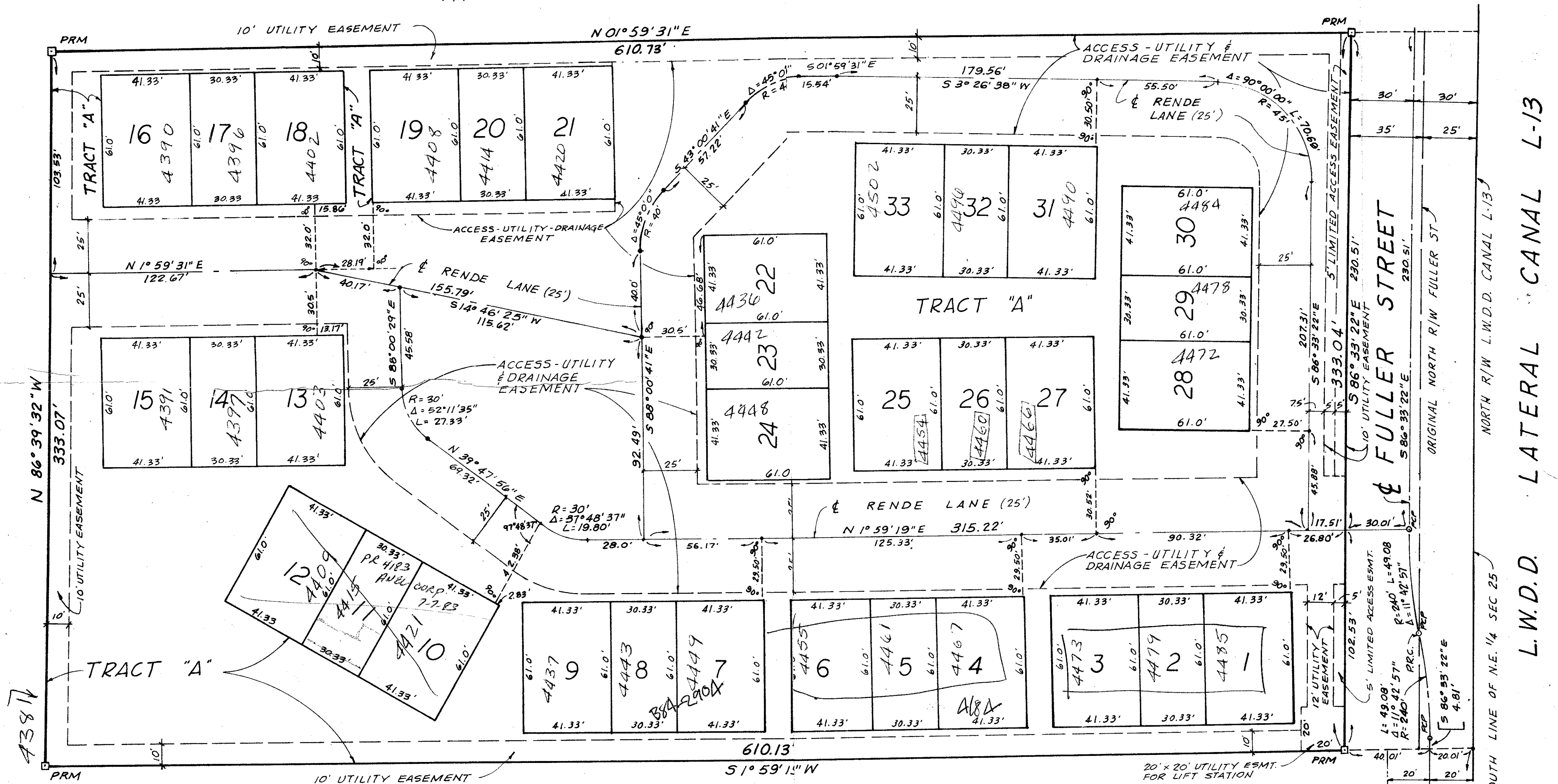
THIS INSTRUMENT PREPARED BY:
ANTHONY MICHUDA
JAMES D. CARLTON, INC.
2829 OKEECHOBEE BLVD.
P.O. BOX 461
WEST PALM BEACH, FLORIDA 33402



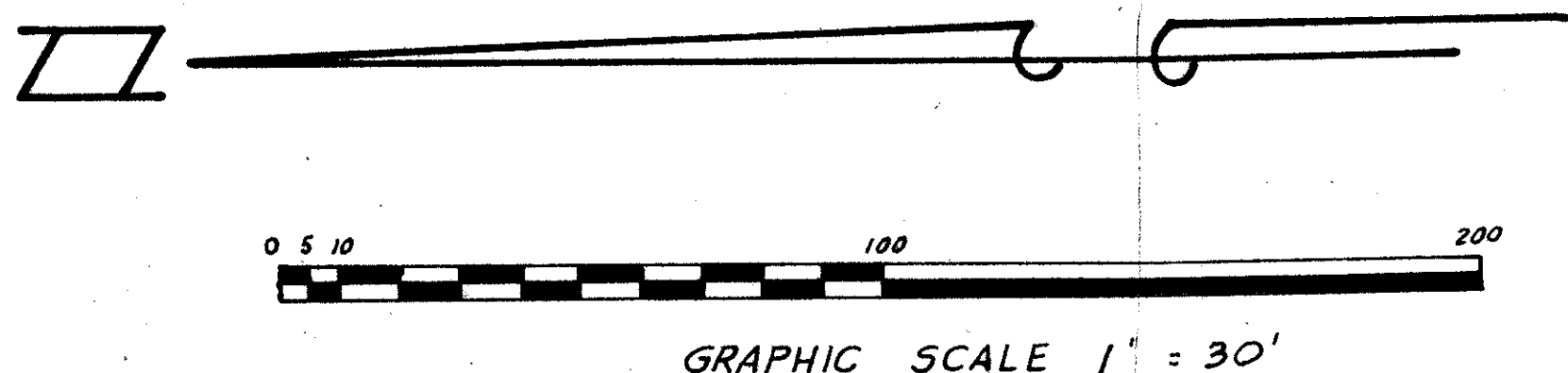
VICINITY MAP N.T.S.

HI - PINES PARK P.B. 22 PG 50

NOT RECORDED



NOT RECORDED



Hidden Hollow
42/79

JAMES D. CARLTON, INC.
CONSULTING ENGINEERS AND LAND SURVEYORS
2829 OKEECHOBEE BOULEVARD WEST PALM BEACH, FLORIDA
683-8800

0252-000